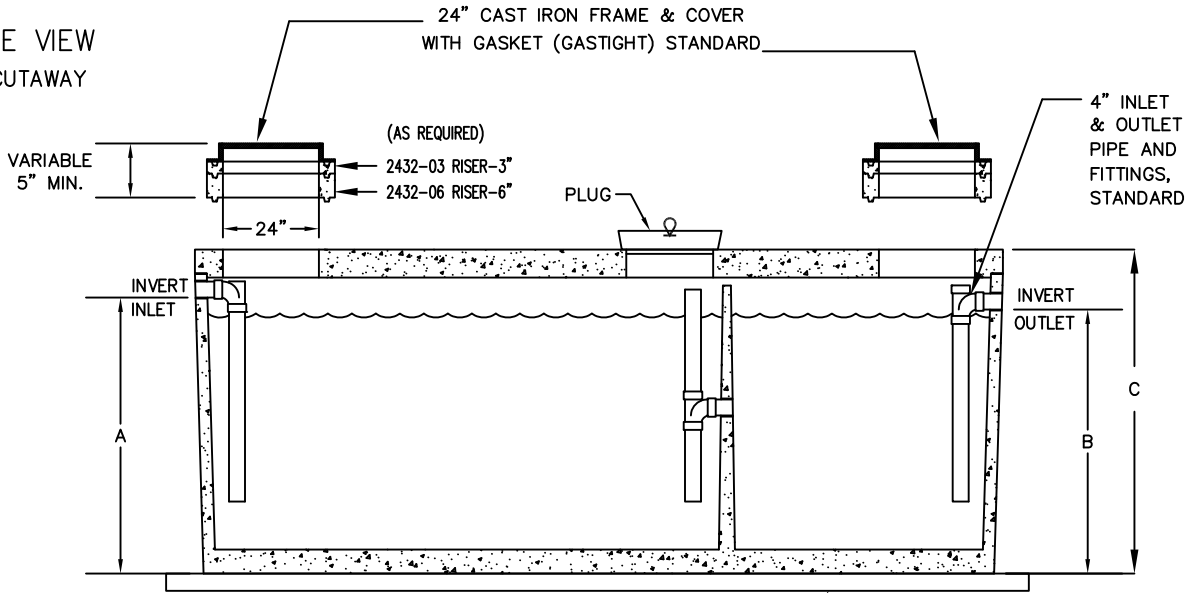
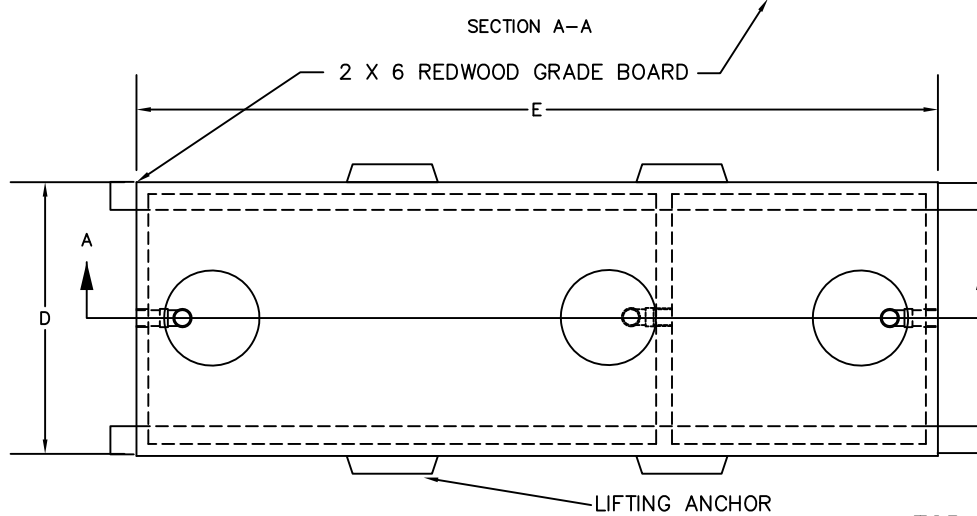


SIDE VIEW
CUTAWAY



SECTION A-A



TOP VIEW
(COVERS REMOVED)

1. CONCRETE GREASE INTERCEPTOR SHALL BE AS MANUFACTURED BY THE JENSEN PRECAST OF SACRAMENTO, CALIFORNIA, OR APPROVED EQUAL.
2. THE GREASE INTERCEPTOR SHALL BE LOCATED AND INSTALLED OUTSIDE OF THE BUILDING.
3. THE GREASE INTERCEPTOR SHALL BE LOCATED AND/OR CONSTRUCTED IN SUCH A MANNER AS TO EXCLUDE THE ENTRANCE OF SURFACE, STORM, OR RAINWATER.
4. SIZE OF GREASE INTERCEPTOR SHALL BE APPROVED BY THE DISTRICT ENGINEER.
5. BOX DESIGN LOAD IS H2O TRAFFIC LOADING WITH 1' TO 6' OF SOIL COVER.
6. ALL EXPOSED EXTERIOR COUPLINGS SHALL BE "NO-HUB" COUPLINGS ALL INTERIOR FITTINGS SHALL BE "NO-HUB" CAST IRON OR APPROVED EQUAL.
7. INSTALL SAMPLING BOX WITHIN 3' OF THE OUTLET OF THE GREASE INTERCEPTOR.
8. GREASE INTERCEPTOR SHALL BE SET ON DRAIN ROCK.

CAPACITY IN GALLONS	JENSEN MODEL	A	B	C	D	E
2000	JP200EPE-G	5'-0"	4'-9"	6'-0"	4'-11"	15'-11"
2500	JZ2500EPE-G	5'-0"	4'-9"	6'-0"	5'-9"	16'-10"
3000	JZ3000EPE-G	5'-9"	5'-6"	6'-9"	5'-9"	16'-10"

Dublin San Ramon Services District

REVISION DATE
MAR 2012

GREASE INTERCEPTOR
2000 - 3000 GALLON CAPACITY

REVISED BY
BCD

SIGNED COPY ON FILE AT DISTRICT OFFICE

DRAWING
S-14