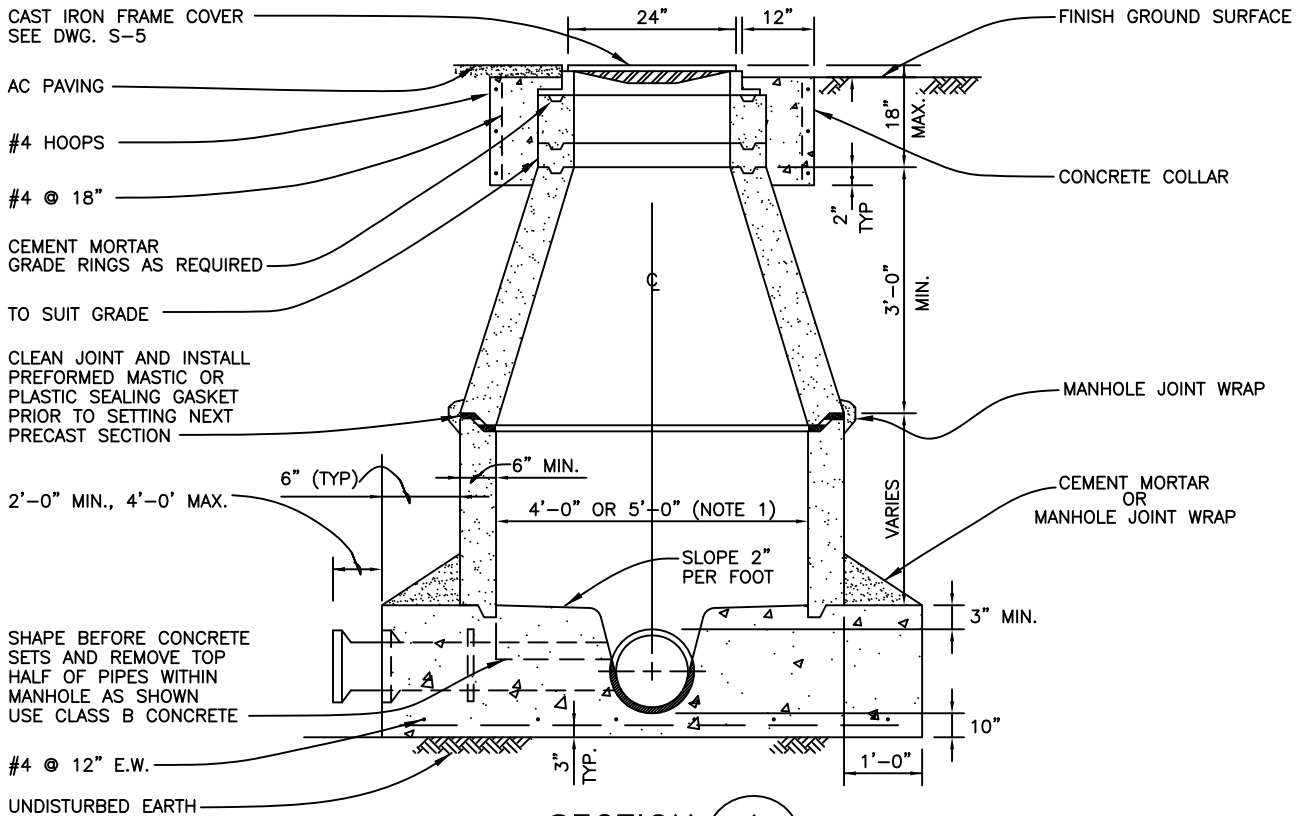


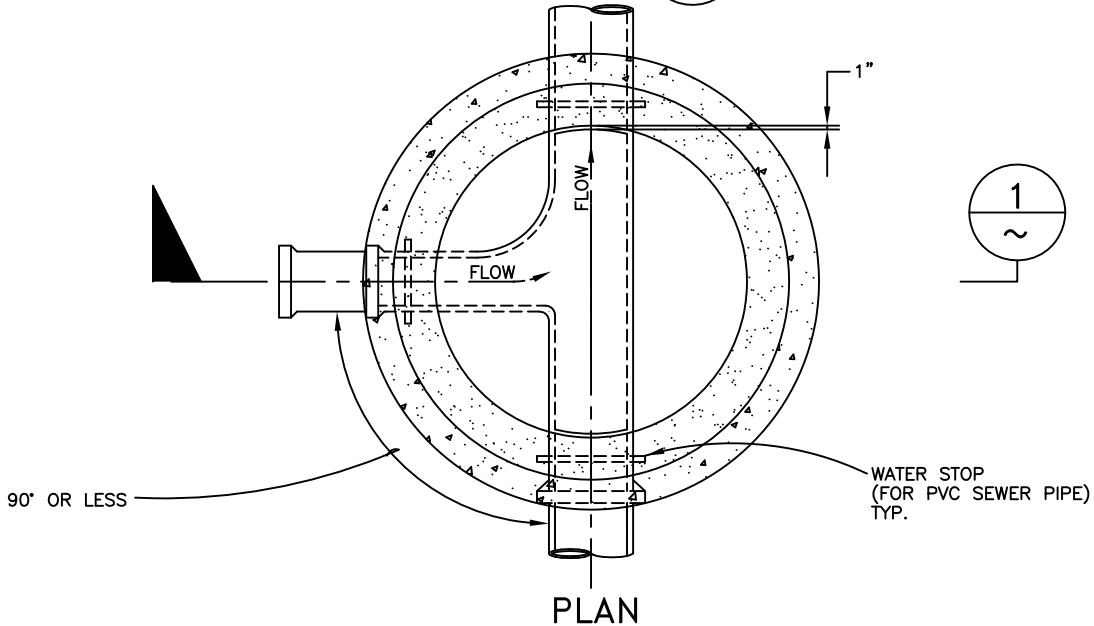
ADWF, MGD	PF
.01	3.00
.05	2.40
.07	2.29
.08	2.25
.12	2.17
.14	2.14
.15	2.13
.16	2.12
.22	2.09
.40	2.02
.46	2.00
.57	1.96
.84	1.91

REV. 04/07

Dublin San Ramon Services District	DATE MAY 1987
PEAKING FACTOR VERSUS AVERAGE DAILY FLOW	DESIGNED DJM
SIGNED COPY ON FILE AT DISTRICT OFFICE	DRAWING S-1



SECTION 1
NTS



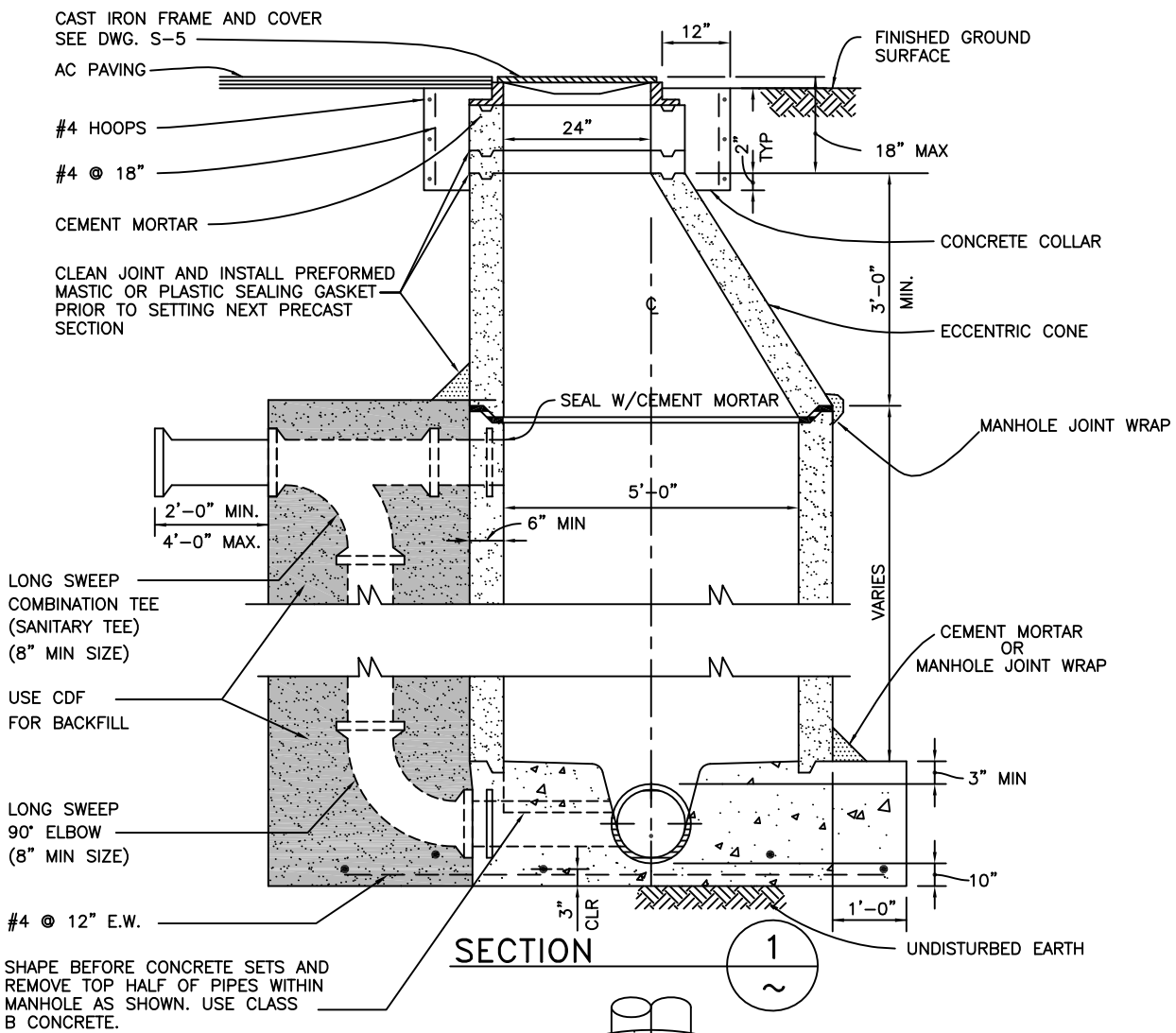
PLAN

NOTES:

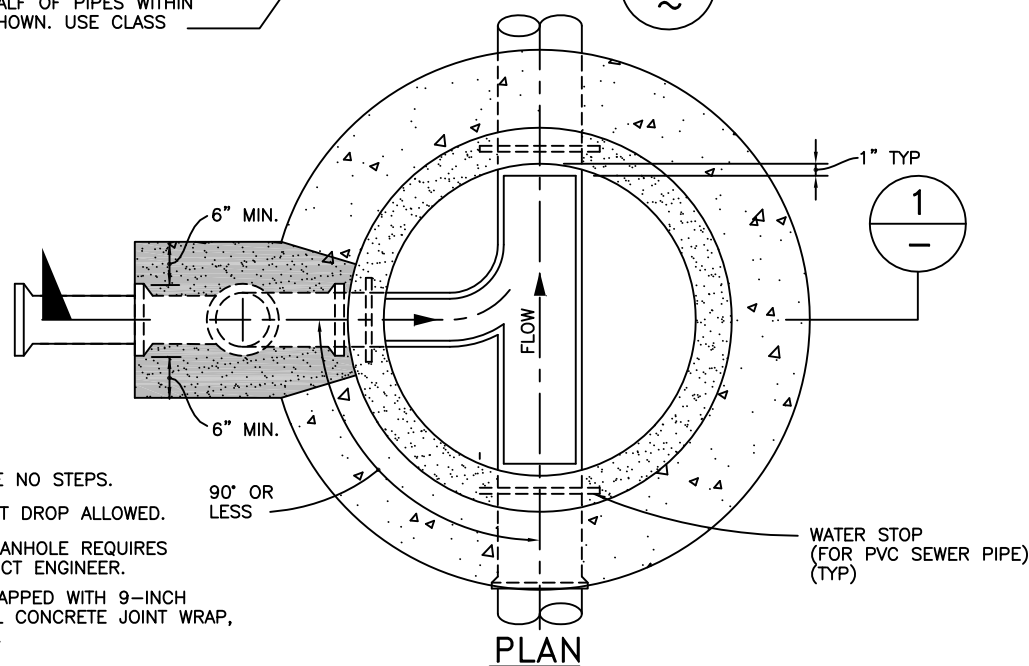
1. SEE SPEC. SEC. III-A5-7 FOR CRITERIA ON MANHOLE SIZING. NTS
2. MANHOLE SHALL HAVE NO STEPS.
3. USE RAMNECK OR APPROVED EQUAL BETWEEN JOINTS. TRIM ALL JOINTS AFTER COMPLETION.
4. JOINTS SHALL BE WRAPPED WITH 9-INCH RUB'R-NEK EXTERNAL CONCRETE JOINT WRAP, OR APPROVED EQUAL.
5. ALL PIPES MUST HAVE A JOINT 2'-4' OUT FROM MANHOLE.

REV. 04/07

Dublin San Ramon Services District	DATE MAY 1987
STANDARD MANHOLE	DESIGNED SRH
SIGNED COPY ON FILE AT DISTRICT OFFICE	DRAWING S-2



SHAPE BEFORE CONCRETE SETS AND REMOVE TOP HALF OF PIPES WITHIN MANHOLE AS SHOWN. USE CLASS B CONCRETE.

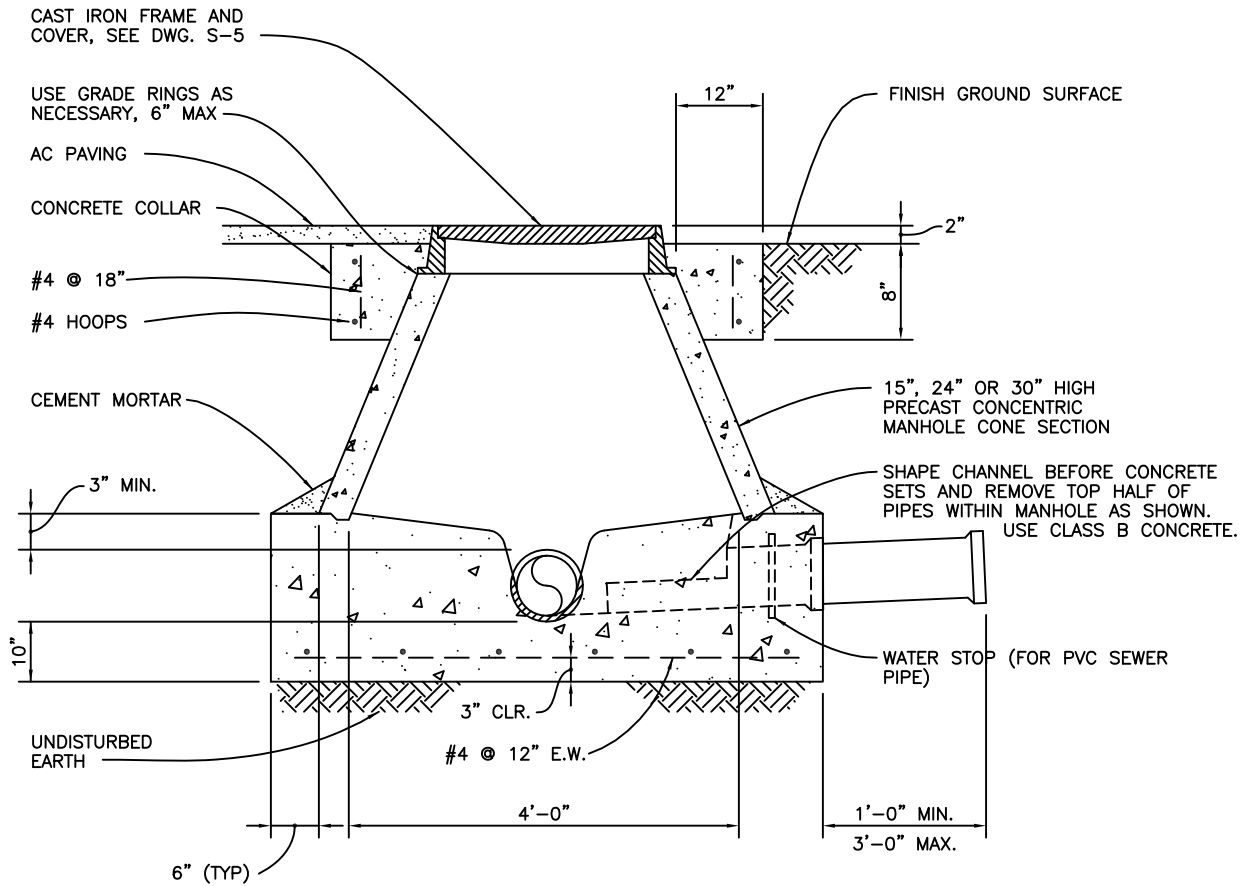


NOTES:

1. MANHOLE SHALL HAVE NO STEPS.
2. MAXIMUM OF 10-FOOT DROP ALLOWED.
3. THE USE OF DROP MANHOLE REQUIRES APPROVAL BY DISTRICT ENGINEER.
4. JOINTS SHALL BE WRAPPED WITH 9-INCH RUB'R-NEK EXTERNAL CONCRETE JOINT WRAP, OR APPROVED EQUAL.

REV. 11/11

Dublin San Ramon Services District	DATE NOV 1987
DROP MANHOLE	DESIGNED SRH
SIGNED COPY ON FILE AT DISTRICT OFFICE	DRAWING S-3



NOTES:

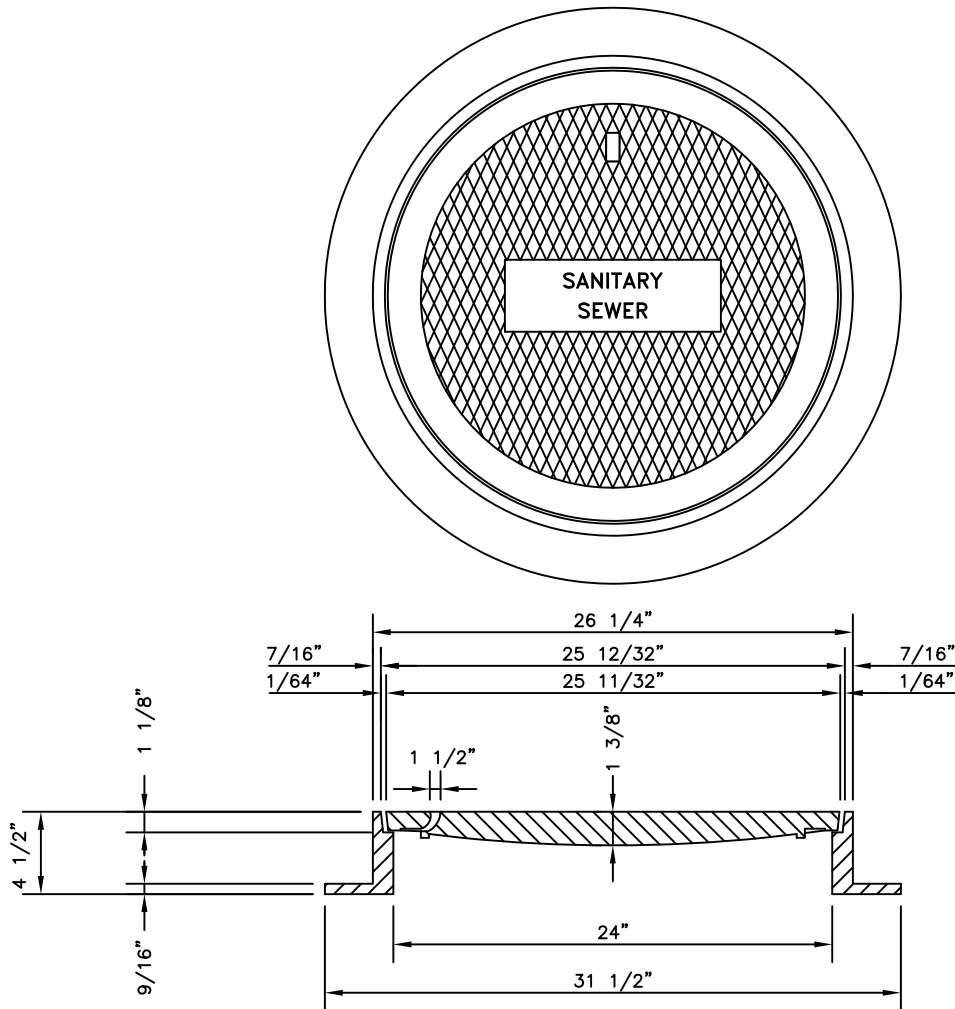
1. TO BE USED WHERE DISTANCE FROM TOP OF BASE TO BOTTOM OF COVER FRAME IS BETWEEN 15" AND 30".
2. MANHOLE SHALL HAVE NO STEPS.
3. JOINTS SHALL BE WRAPPED WITH 9-INCH RUB'R-NEK EXTERNAL CONCRETE JOINT WRAP, OR APPROVED EQUAL.

REV. 04/07

Dublin San Ramon Services District	DATE MAY 1987
STANDARD SHALLOW MANHOLE	DESIGNED DJM
SIGNED COPY ON FILE AT DISTRICT OFFICE	DRAWING S-4

STANDARD 24" HEAVY DUTY NON-ROCKING MANHOLE FRAME AND COVER

FRAME AND COVER

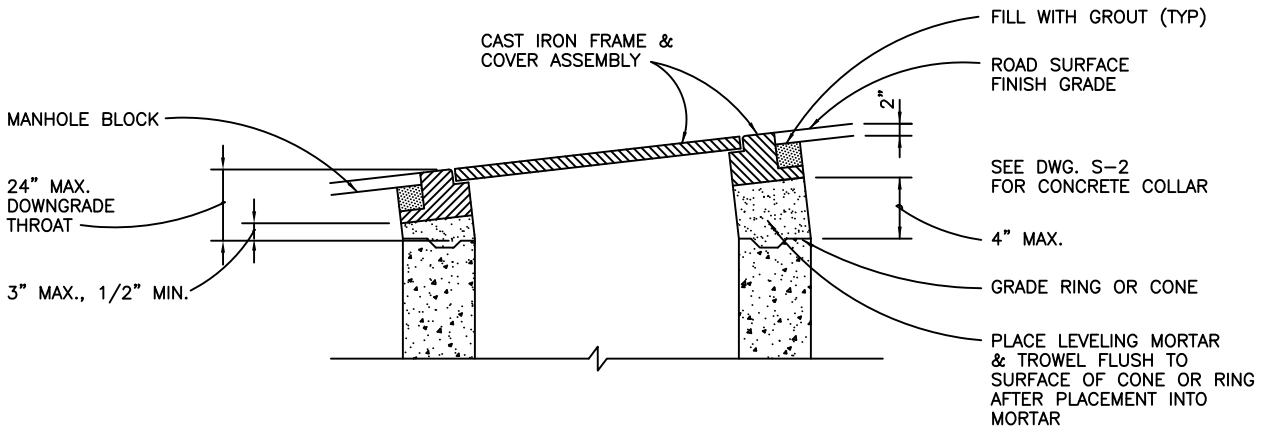


NOTES:

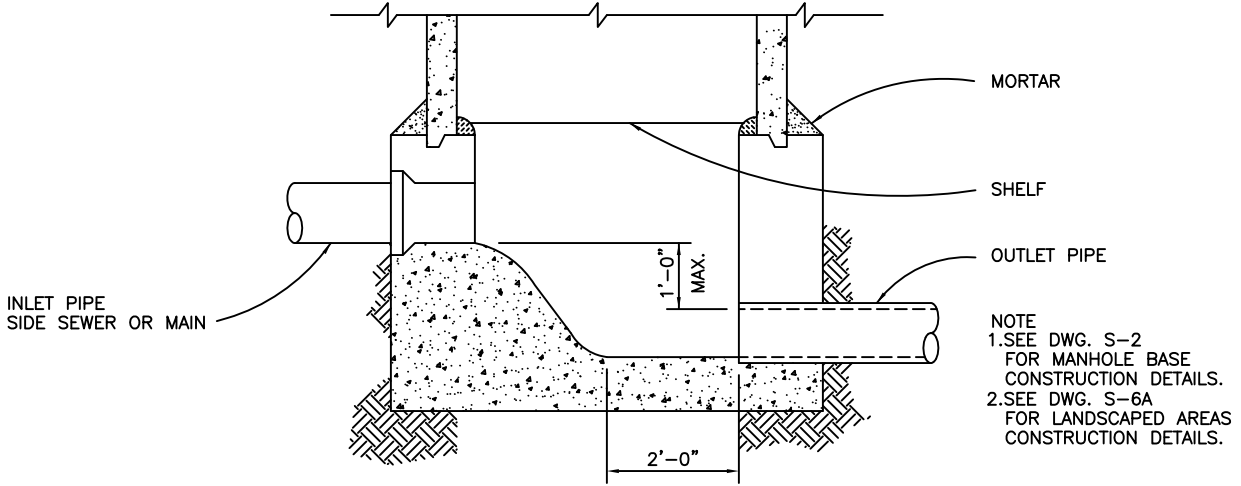
1. SPECIFY SANITARY SEWER WHEN ORDERING CASTINGS DIPPED IN ASPHALT PAINT.
2. WHERE THE DISTRICT ENGINEER DEEMS NECESSARY FOR HEIGHTENED PROTECTION OF THE PUBLIC OR ITS FACILITIES, PARMEX MANHOLE FRAME AND COVER, OR APPROVED EQUAL MAY BE REQUIRED.
3. FRAME AND COVER SHALL BE PHOENIX IRON WORKS "P1090", CLAY BAILEY "NO.2008BV", NEENAH "R-1736S" OR APPROVED EQUAL.

REV. 08/11

Dublin San Ramon Services District	REVISION DATE AUG 2011
STANDARD MANHOLE FRAME AND COVER	REVISED BY BCD
SIGNED COPY ON FILE AT DISTRICT OFFICE	DRAWING S-5



ADJUSTMENT TO FINISH GRADE DETAIL

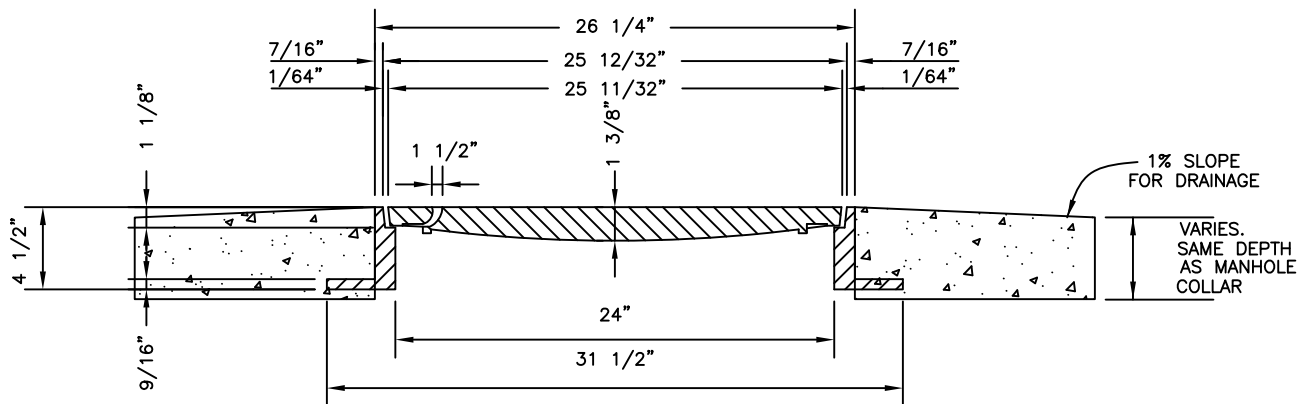
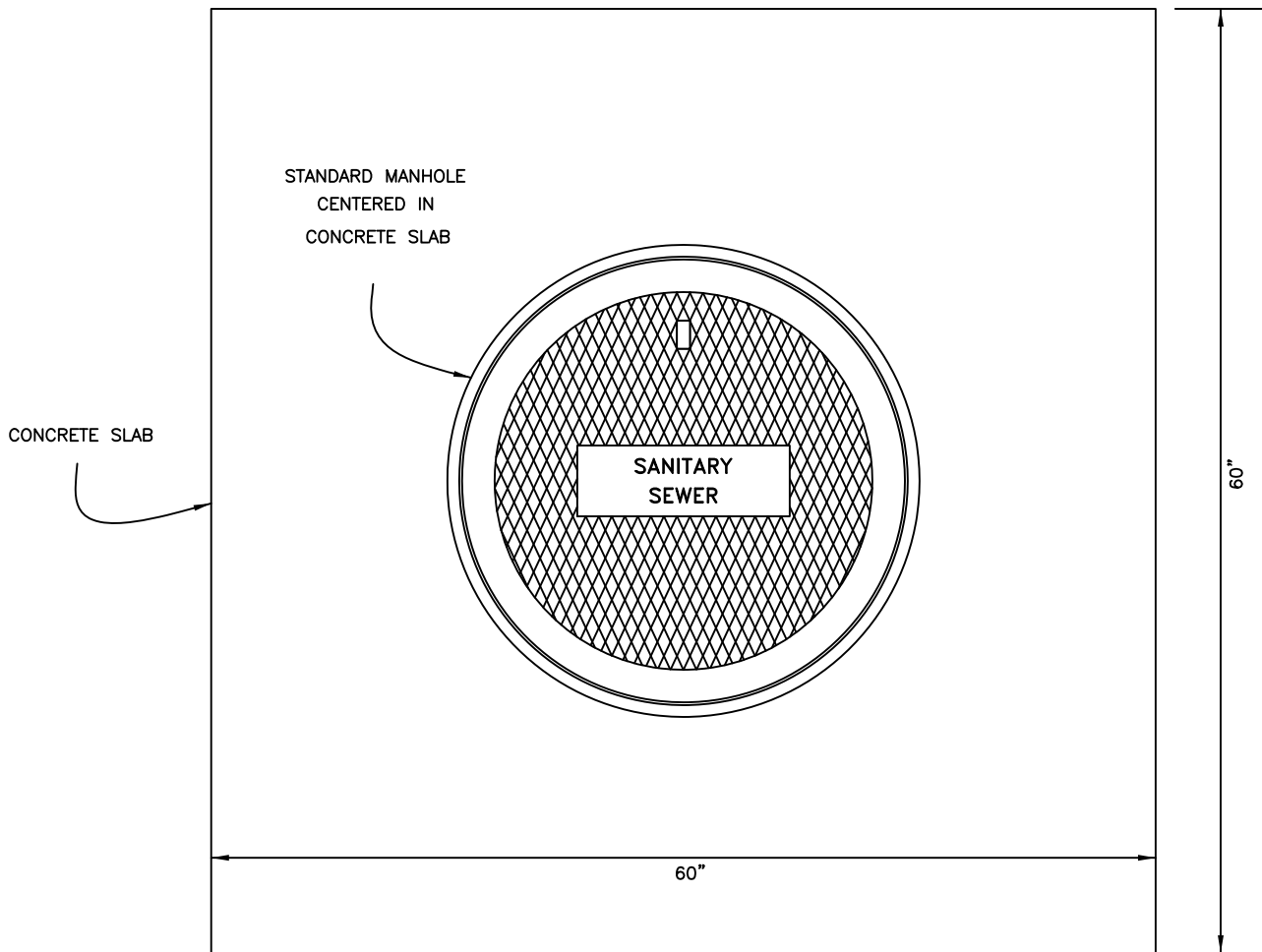


ALLOWABLE DROP IN MANHOLES

REV. 08/11

Dublin San Ramon Services District	DATE MAY 1987
MISCELLANEOUS MANHOLE DETAILS	DESIGNED DJM
SIGNED COPY ON FILE AT DISTRICT OFFICE	DRAWING S-6

UNDEVELOPED AND LANDSCAPED AREAS



REV. 08/11

Dublin San Ramon Services District

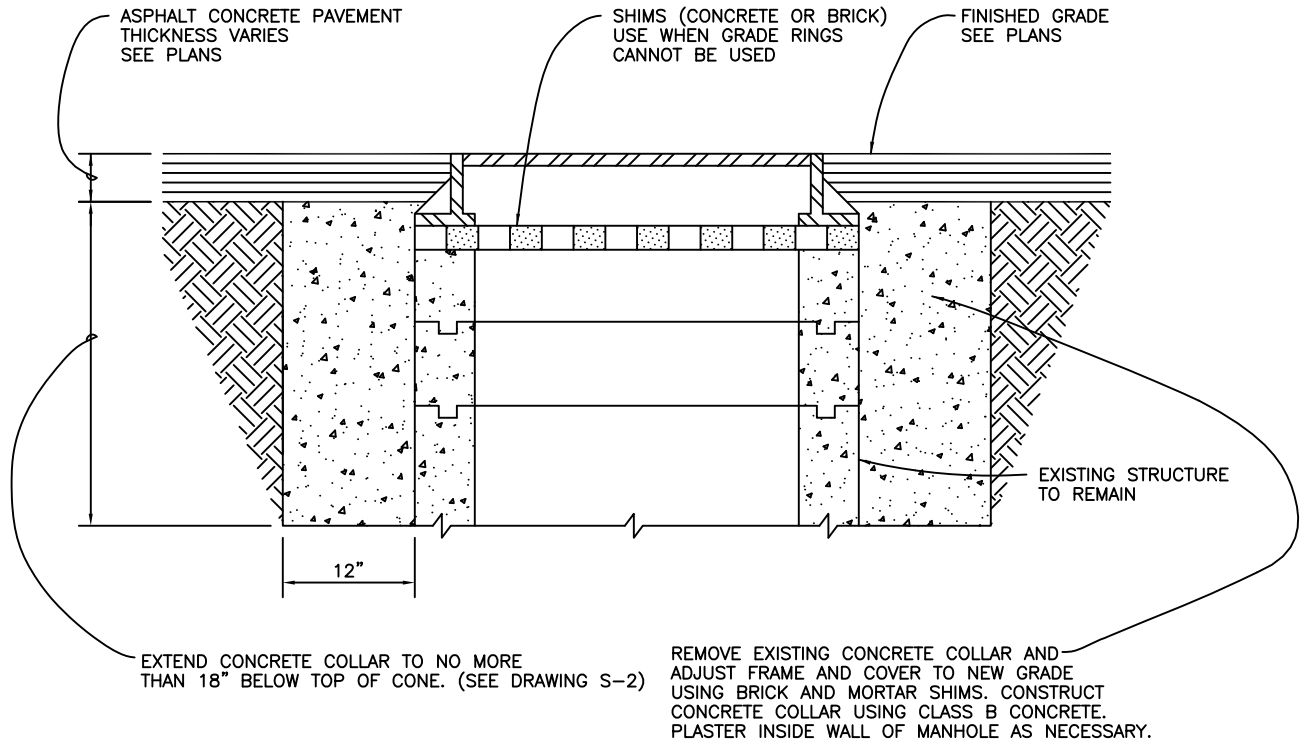
DATE
MAY 1987

MANHOLE PAD DETAIL

DESIGNED
DJM

SIGNED COPY ON FILE AT DISTRICT OFFICE

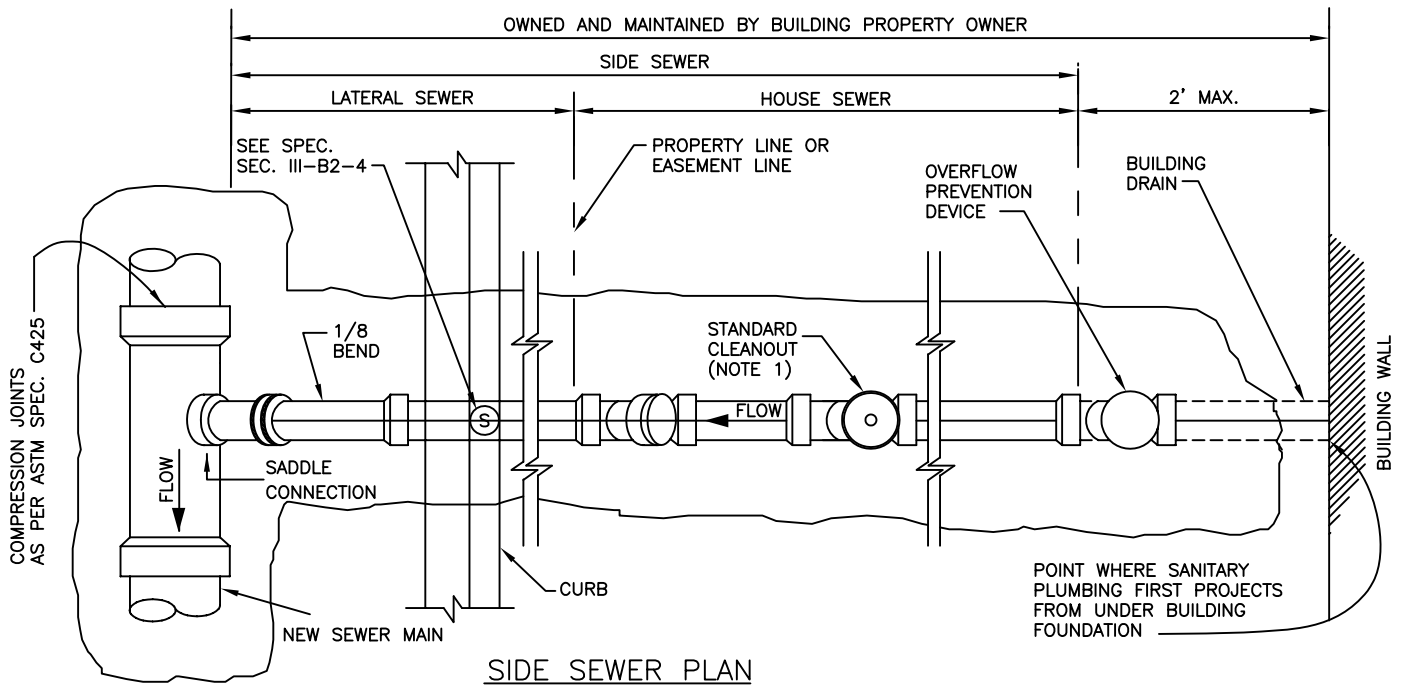
DRAWING
S-6A



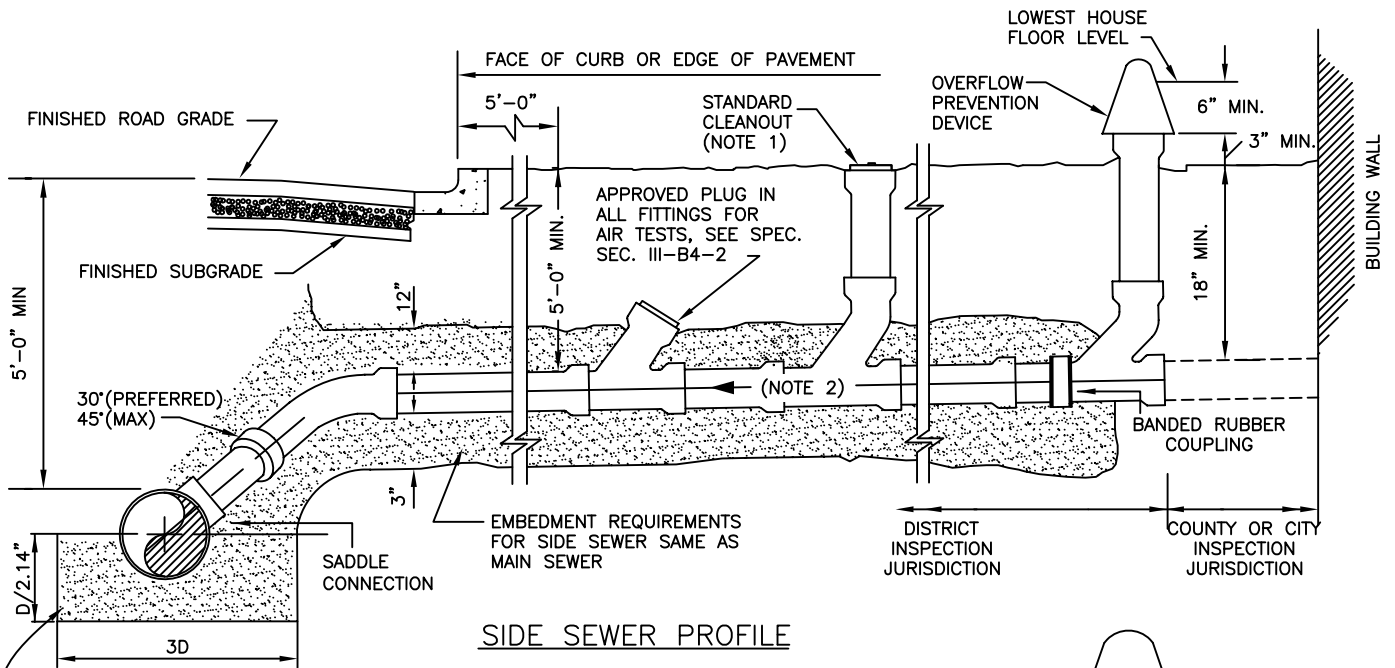
TYPICAL SECTION THROUGH STRUCTURE

REV. 04/07

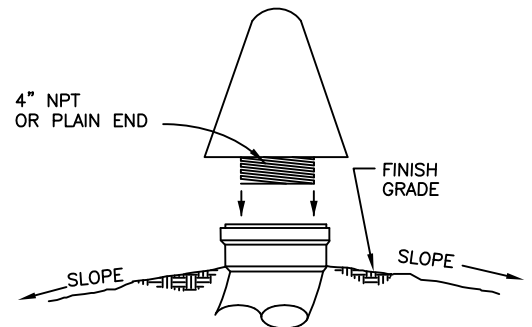
Dublin San Ramon Services District	DATE JAN 1988
MANHOLE FRAME AND COVER ADJUSTMENT DETAILS	DESIGNED BMD
SIGNED COPY ON FILE AT DISTRICT OFFICE	DRAWING S-7



SIDE SEWER PLAN



SIDE SEWER PROFILE



OVERFLOW PREVENTION DEVICE

NOTE:

1. CLEANOUT SHALL BE EQUAL IN SIZE TO SIDE SEWER. SEE SECTION III-A6 FOR LOCATION.
2. MIN. SLOPE SHALL BE 0.02 FT/FT (S=0.02).
3. SIDE SEWER, INCLUDING LATERAL SEWER AND HOUSE SEWER, IS OWNED AND MAINTAINED BY THE OWNER OF THE PROPERTY IT SERVES.
4. INSTALL SEWER OVERFLOW PREVENTION DEVICE ON ALL LATERALS.

REV. 08/11

Dublin San Ramon Services District

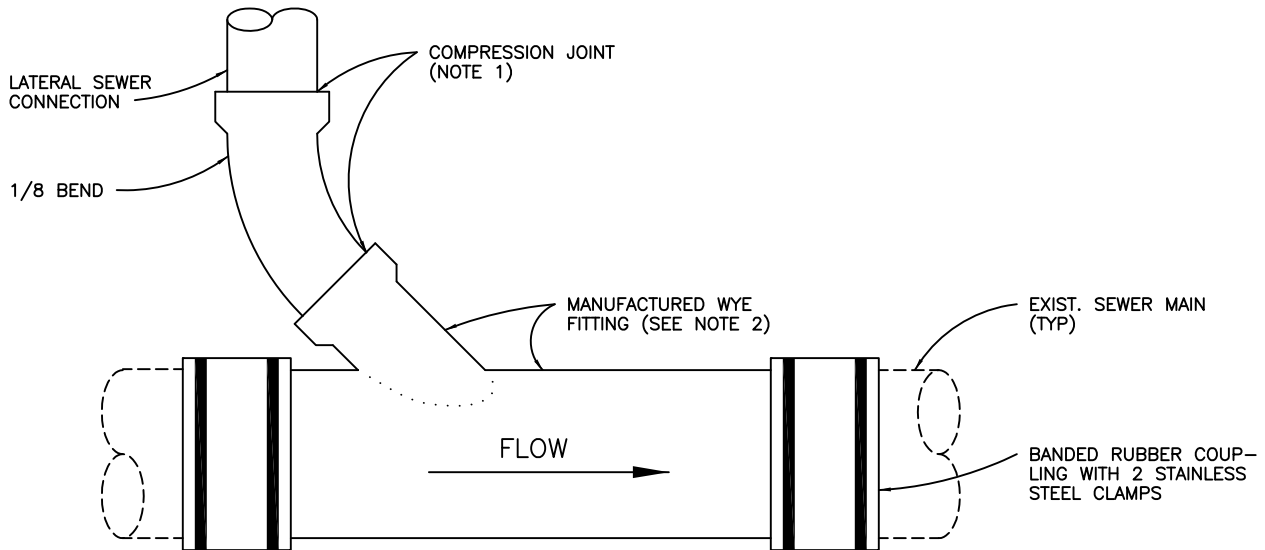
DATE
MAY 1987

TYPICAL SIDE SEWER INSTALLATION

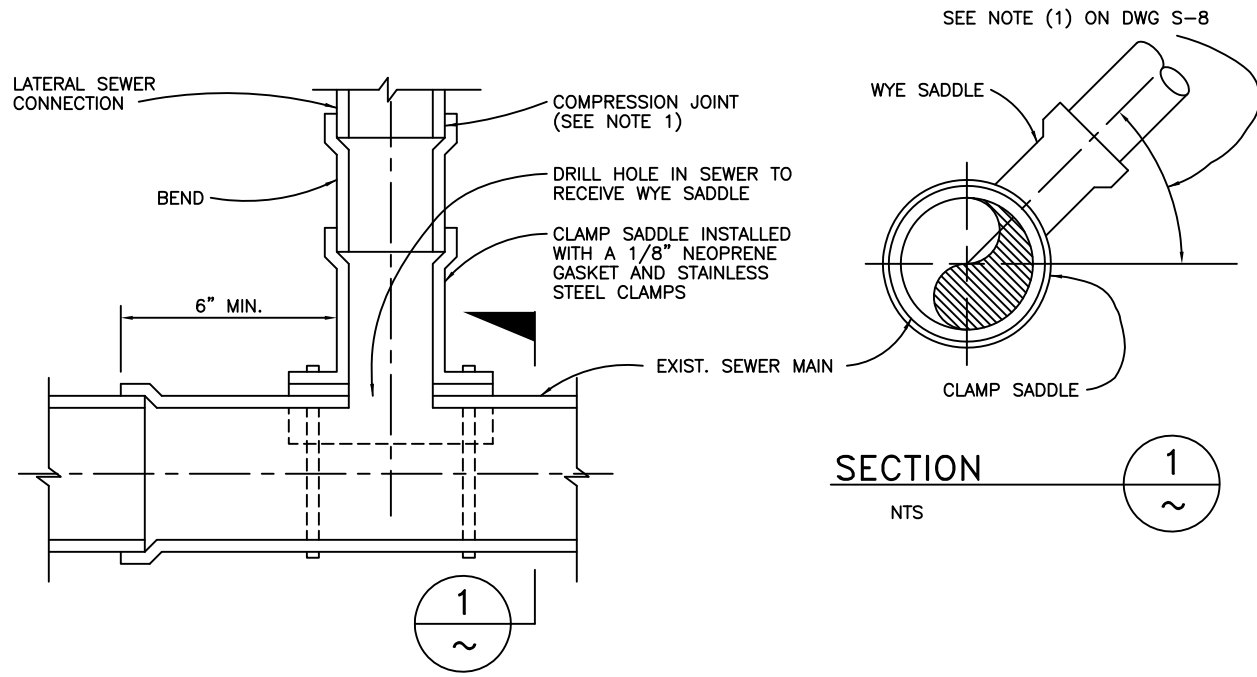
DESIGNED
DJM

SIGNED COPY ON FILE AT DISTRICT OFFICE

DRAWING
S-8



DRY CONNECTION



WET TAP CONNECTION

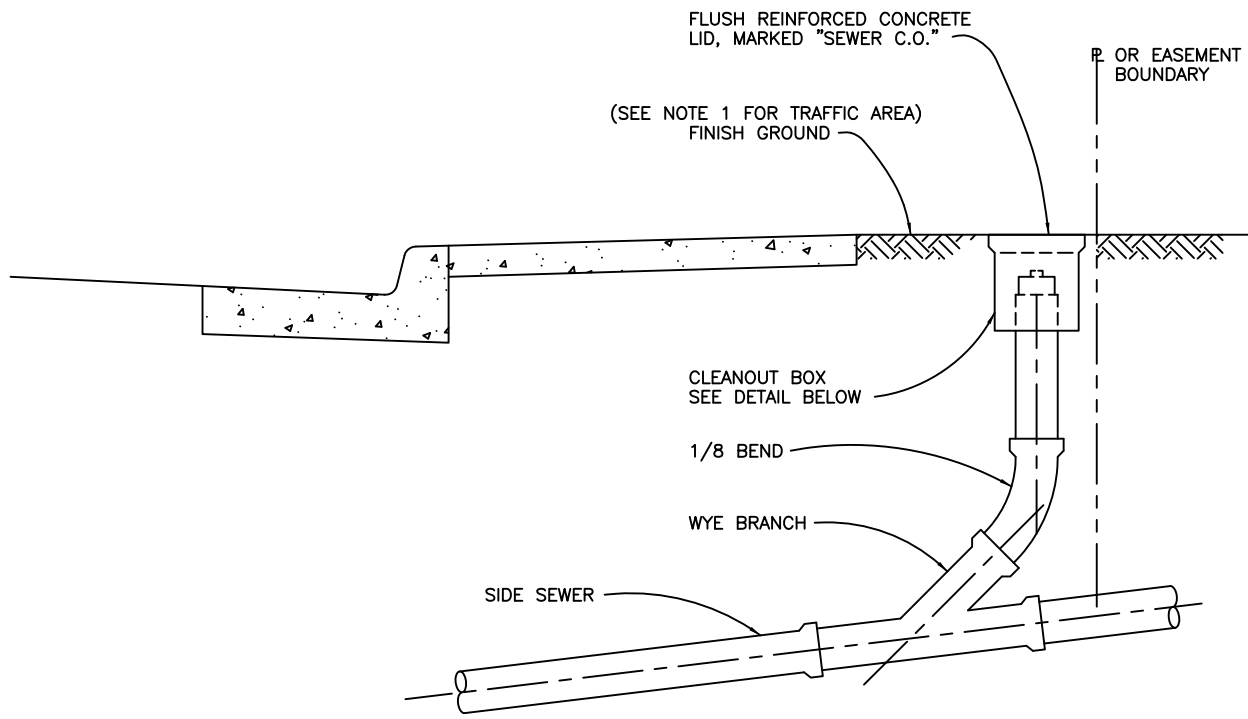
(NOTE 3)

NOTES:

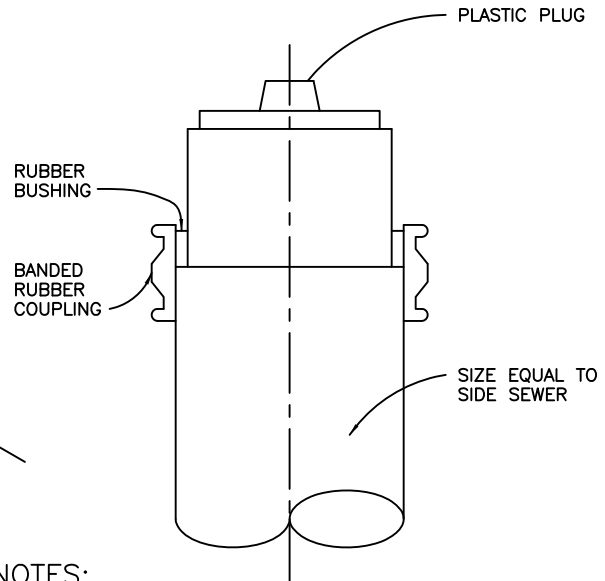
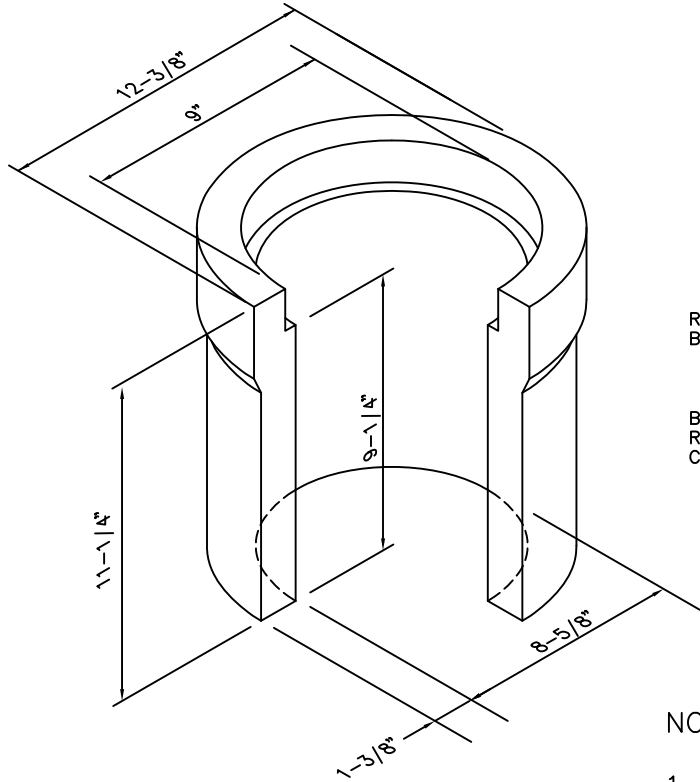
1. COMPRESSION JOINTS FOR VCP SHALL MEET ASTM C-425 SPECS.
2. MANUFACTURED WYE SADDLE INSTALLED ON SEWER SECTION WITH PLAIN ENDS.
3. APPROVAL OF DISTRICT ENGINEER REQUIRED.

REV. 07/04

Dublin San Ramon Services District	DATE MAY 1987
LATERAL SEWER CONNECTION TO EXISTING SEWER MAIN	DESIGNED DJM
SIGNED COPY ON FILE AT DISTRICT OFFICE	DRAWING S-9



CLEANOUT RISER



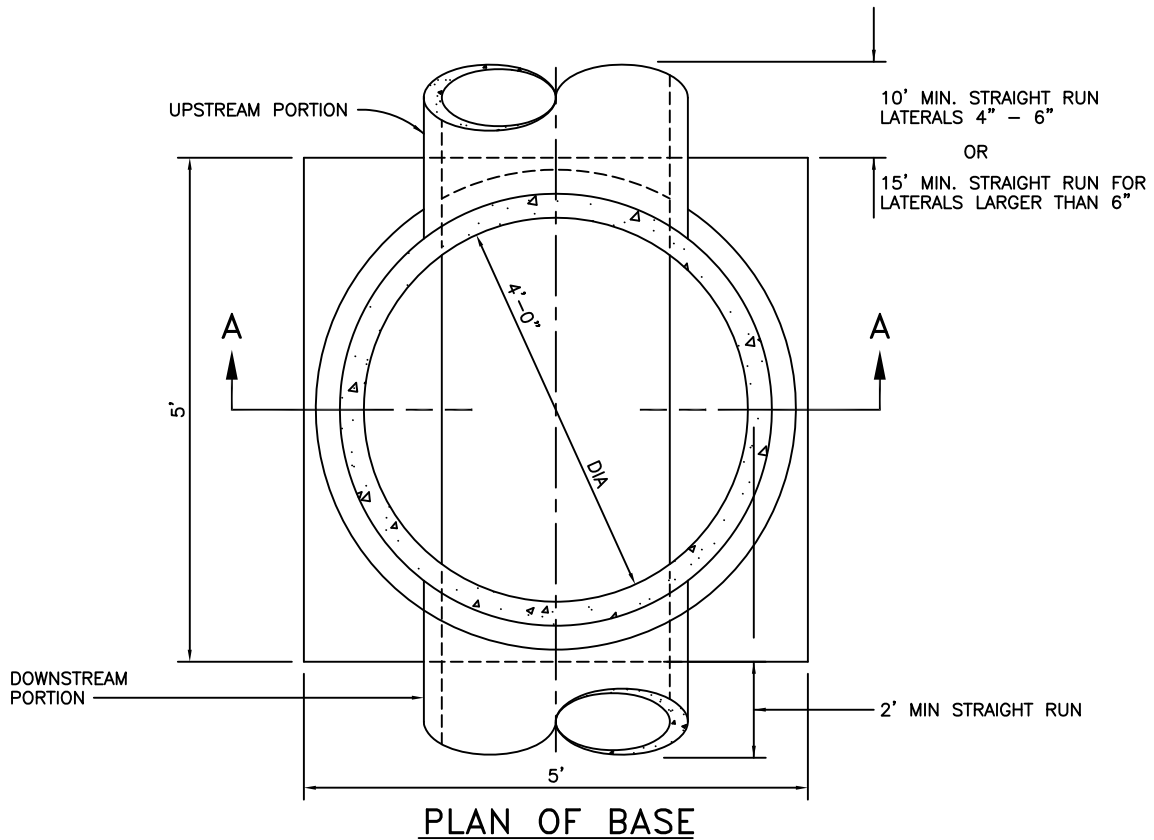
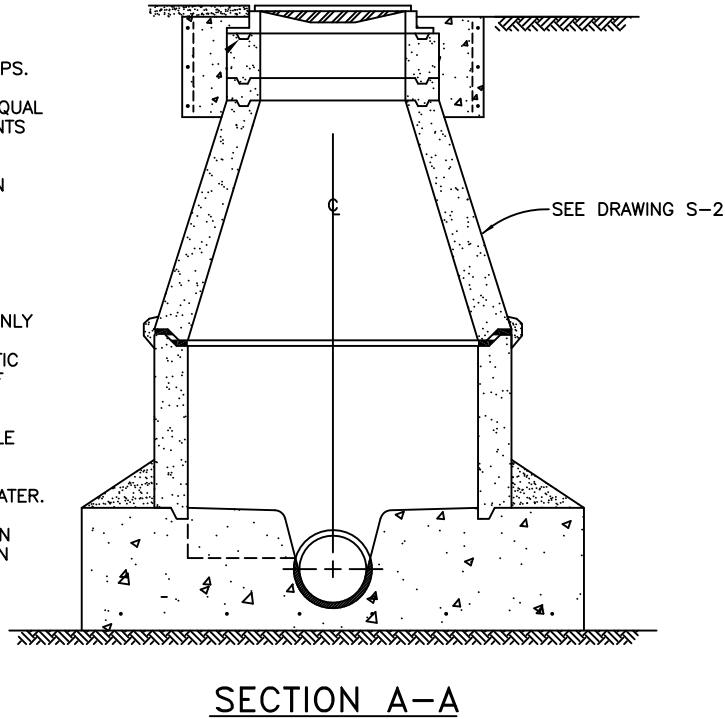
- NOTES:
1. IN STREETS OR PARKING LOTS, CLEAN-OUT BOX MUST BE A G-5 (CHRISTY) BOX WITH METAL LID MARKED "SEWER".

REV. 08/11

Dublin San Ramon Services District	DATE DEC 1968
SIDE SEWER CLEANOUT RISER	DESIGNED SRH
SIGNED COPY ON FILE AT DISTRICT OFFICE	DRAWING S-10

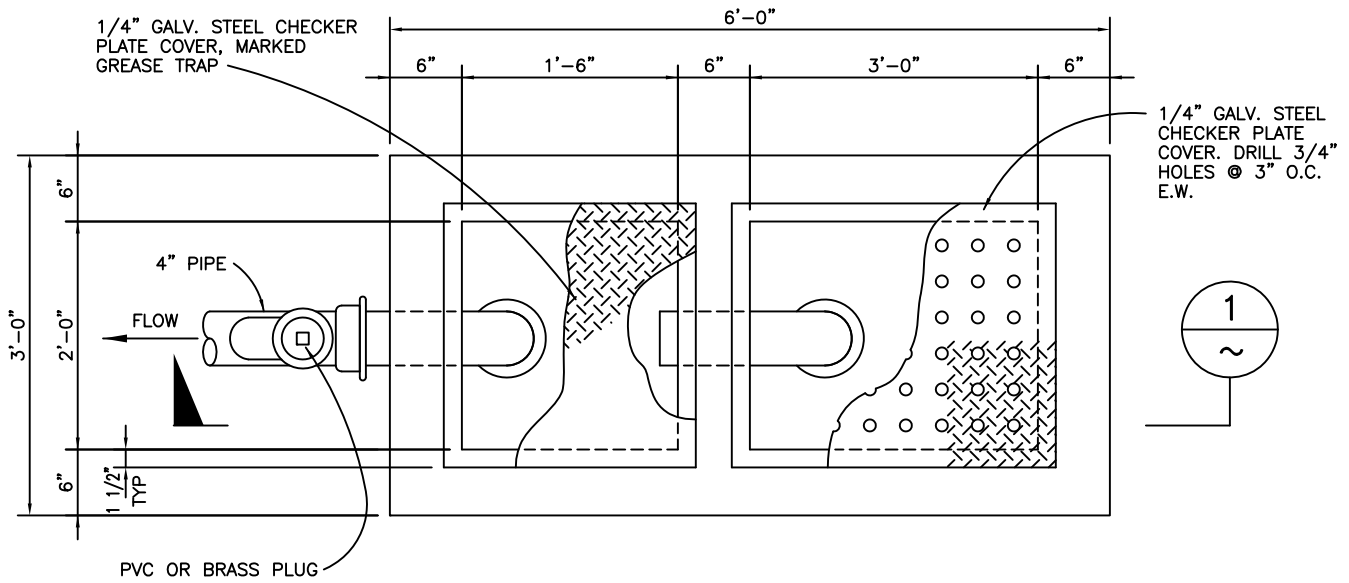
NOTES:

1. MANHOLES SHALL HAVE NO STEPS.
2. USE RAMNECK OR APPROVED EQUAL BETWEEN JOINTS. TRIM ALL JOINTS AFTER COMPLETION.
3. THERE SHALL BE NO ANGLES IN MANHOLE. IT SHALL ONLY BE A STRAIGHT THRU FLOWLINE.
4. MAINTAIN CONSTANT SLOPE UPSTREAM AND THRU MANHOLE.
5. SAMPLING MANHOLE ALLOWED ONLY FOR NONRESIDENTIAL BUILDING SERVICE LATERALS IN NONTRAFFIC AREAS AND UPON APPROVAL OF DISTRICT ENGINEER.
6. LOCATION OF SAMPLING MANHOLE SHALL BE DESIGNATED BY THE DISTRICT PRIOR TO APPROVAL AND ISSUANCE OF THE WASTEWATER. WASTE INSPECTOR FOR LOCATION OF SAMPLING WELL, IF LOCATION IS NOT SHOWN ON APPROVED DRAWINGS.
7. JOINTS SHALL BE WRAPPED WITH 9-INCH RUB'R-NEK EXTERNAL CONCRETE JOINT WRAP, OR APPROVED EQUAL.

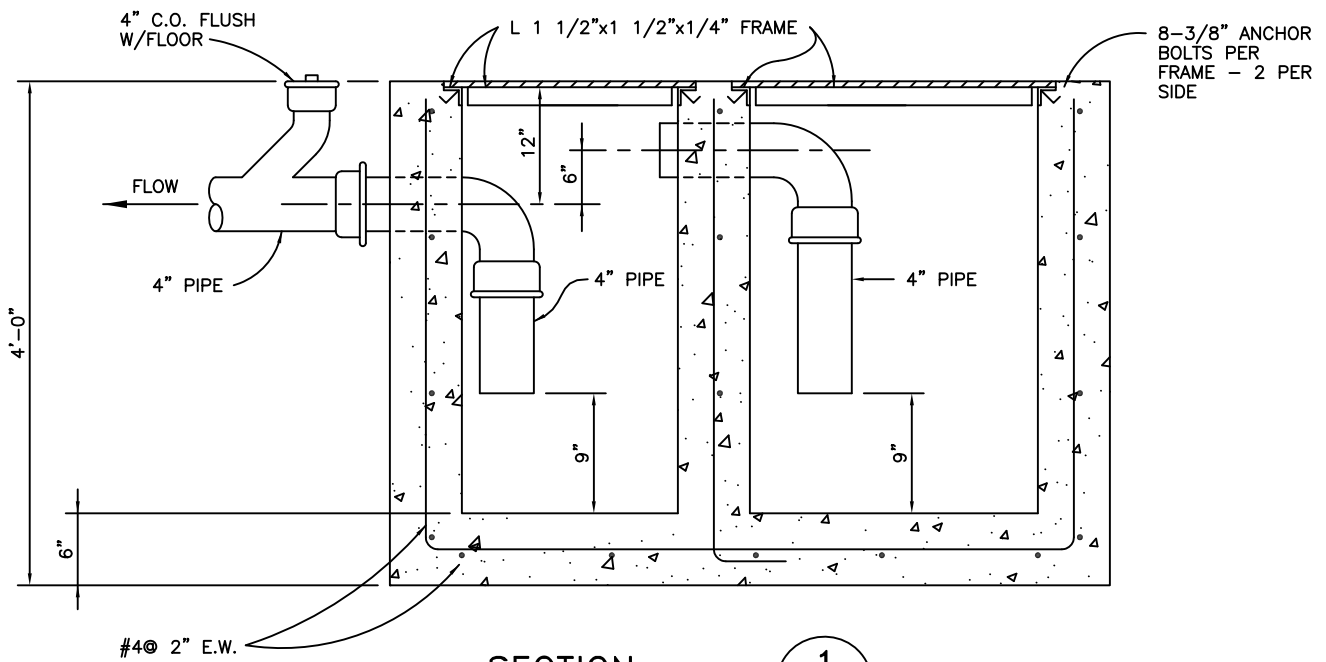


REV. 01/04

Dublin San Ramon Services District	DATE MAR 1988
SAMPLING MANHOLE	DESIGNED BMD
SIGNED COPY ON FILE AT DISTRICT OFFICE	DRAWING S-11



PLAN



SECTION

NTS

NOTES:

1. FLOOR SHALL DRAIN TO DRILLED PLATE COVER.
2. PIPES SHALL BE DIP, ABS OR VCP. (CAST IRON IS NOT ALLOWED.)
3. TWO 18" DRAIN INLETS MAY BE SUBSTITUTED FOR CAST IN PLACE TRAP.

REV. 07/04

Dublin San Ramon Services District

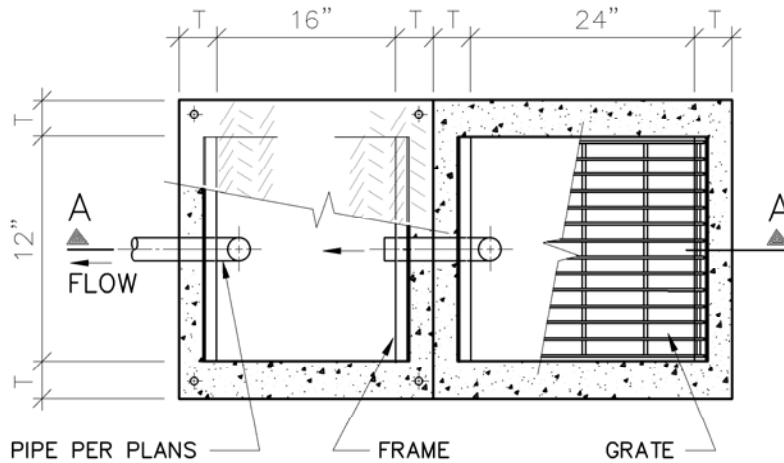
DATE
AUG 1966

GREASE AND SAND TRAP

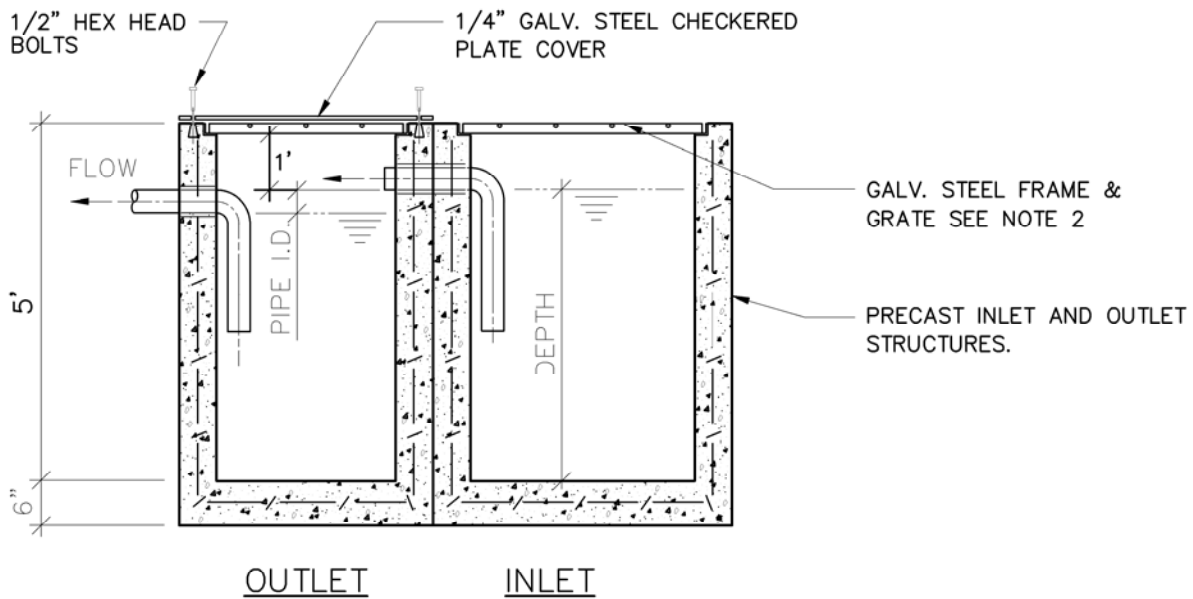
DESIGNED
SRH

SIGNED COPY ON FILE AT DISTRICT OFFICE

DRAWING
S-12



PLAN VIEW



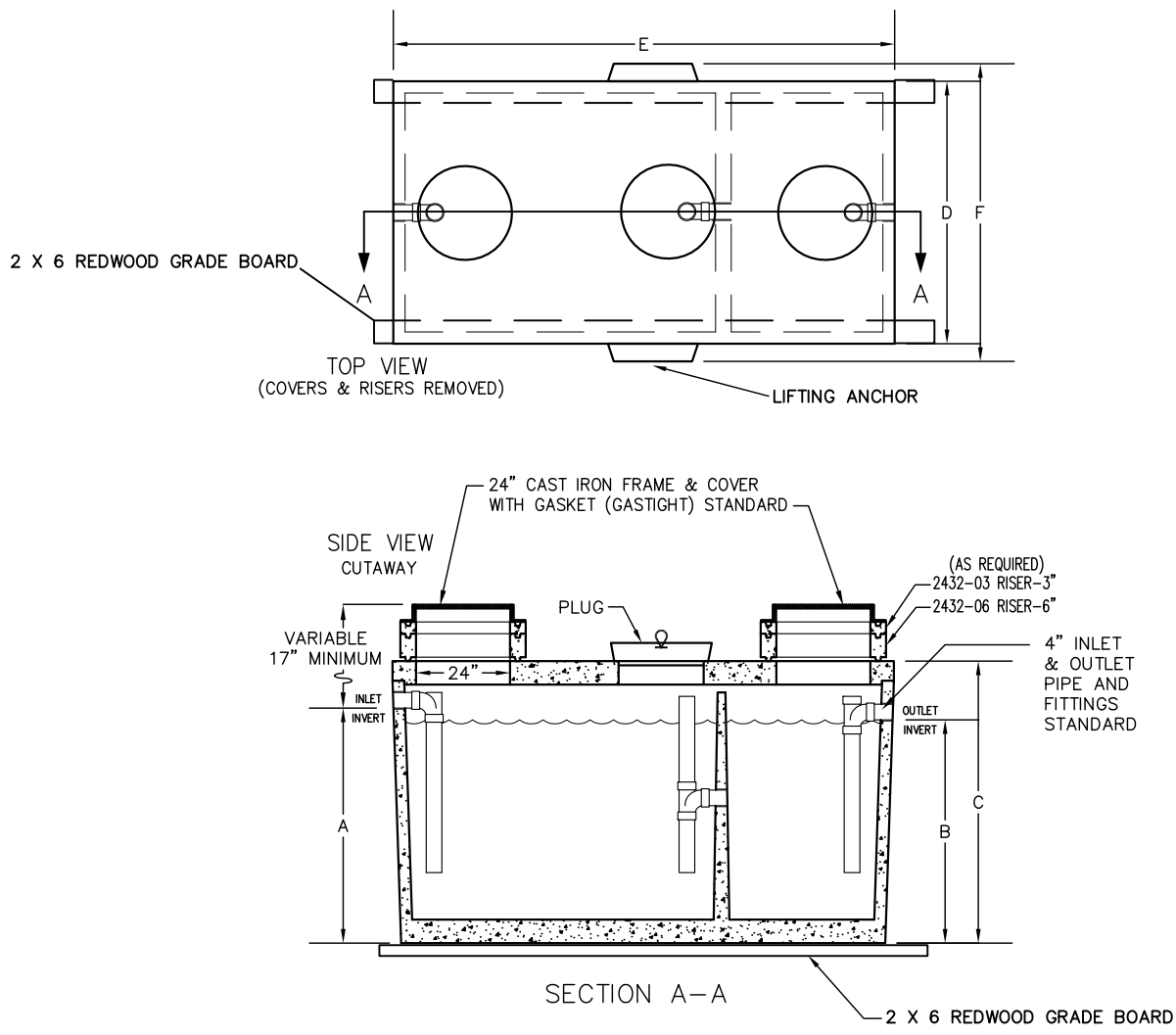
SECTION A-A

NOTES :

1. FRAMES, GRATES, AND CHECKER PLATE COVER ARE AVAILABLE FOR BOTH H2O HWY. LOADING AND PEDESTRIAN LOADING
2. PIPE OPENINGS SHALL BE CAST INTO INLETS.

REV. 01/2006

Dublin San Ramon Services District	DATE April 2005
GREASE AND SAND TRAP FOR TRASH ENCLOSURES	DESIGNED KWP
SIGNED COPY ON FILE AT DISTRICT OFFICE	DRAWING S-12A



1. CONCRETE GREASE INTERCEPTOR SHALL BE AS MANUFACTURED BY THE JENSEN PRECAST OF SACRAMENTO, CALIFORNIA, OR APPROVED EQUAL.
2. THE GREASE INTERCEPTOR SHALL BE LOCATED AND INSTALLED OUTSIDE OF THE BUILDING.
3. THE GREASE INTERCEPTOR SHALL BE LOCATED AND/OR CONSTRUCTED IN SUCH A MANNER AS TO EXCLUDE THE ENTRANCE OF SURFACE, STORM, OR RAINWATER.
4. SIZE OF GREASE INTERCEPTOR SHALL BE APPROVED BY THE DISTRICT ENGINEER.
5. BOX DESIGN LOAD IS H2O TRAFFIC LOADING WITH 1' TO 6' OF SOIL COVER.
6. ALL EXPOSED EXTERIOR COUPLINGS SHALL BE "NO-HUB" COUPLINGS ALL INTERIOR FITTINGS SHALL BE "NO-HUB" CAST IRON OR APPROVED EQUAL.
7. INSTALL SAMPLING BOX WITHIN 3' OF THE OUTLET OF THE GREASE INTERCEPTOR.
8. GREASE INTERCEPTOR SHALL BE SET ON DRAIN ROCK.

CAPACITY IN GALLONS	JENSEN MODEL	A	B	C	D	E	F
750	JP750EPE-G	5'-0"	4'-9"	6'-3"	4'-0"	8'-1"	4'-3"
1000	JP1000EPE-G	5'-0"	4'-9"	6'-3"	5'-1"	8'-2"	5'-4"
1200	JP1200EPE-G	5'-0"	4'-9"	6'-6"	5'-9"	8'-6"	6'-0"
1500	JP1500EPE-G	5'-0"	4'-9"	6'-3"	5'-7"	10'-8"	5'-10"

Dublin San Ramon Services District

REVISION DATE
MAR 2012

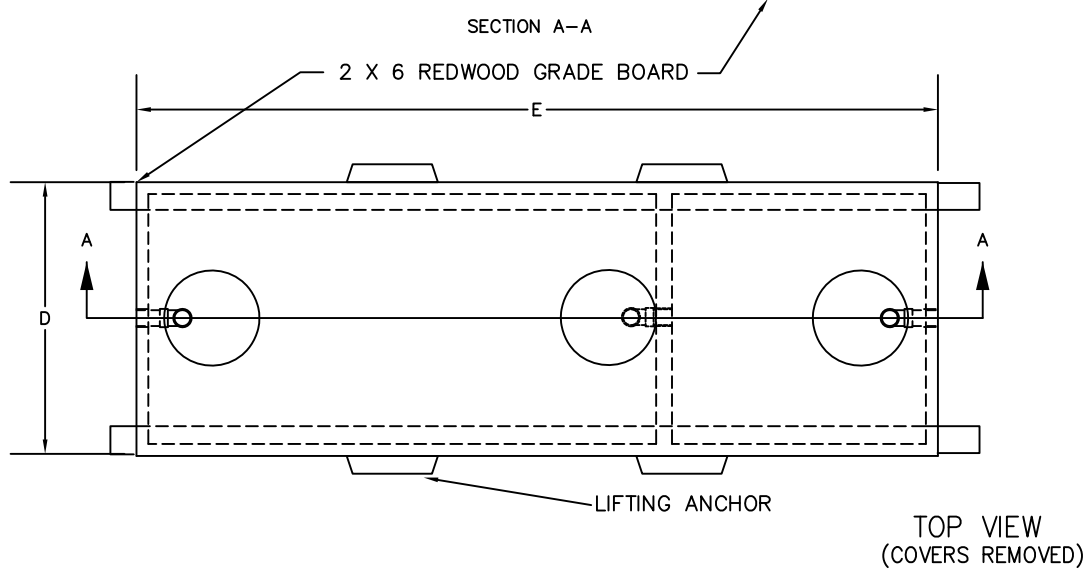
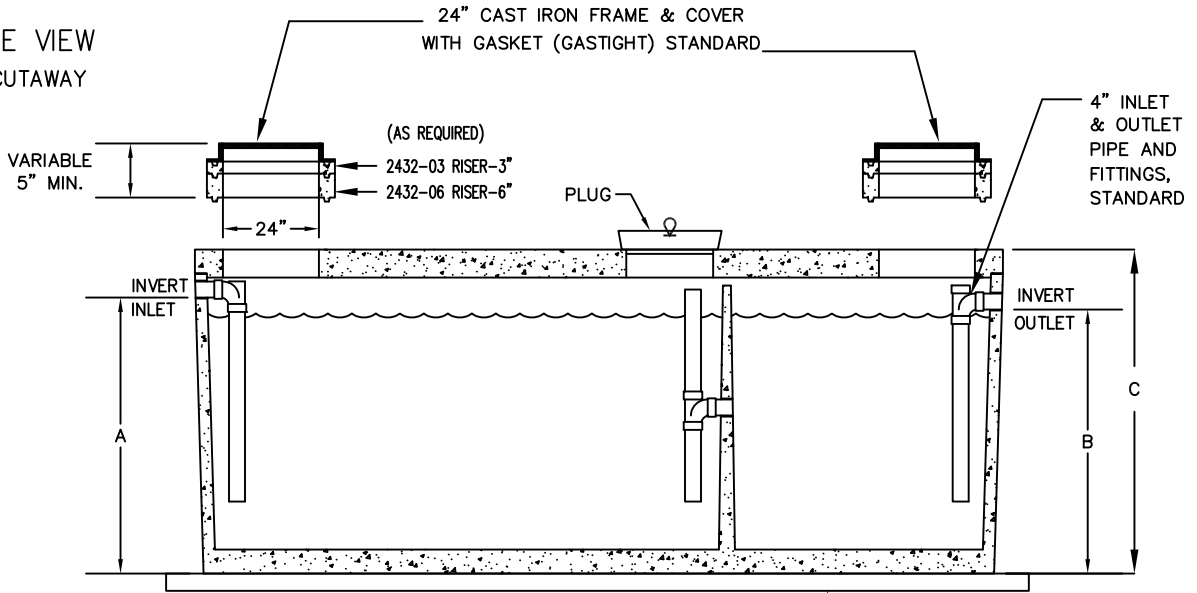
GREASE INTERCEPTOR
750 - 1500 GALLON CAPACITY

REVISED BY
BCD

SIGNED COPY ON FILE AT DISTRICT OFFICE

DRAWING
S-13

SIDE VIEW
CUTAWAY



1. CONCRETE GREASE INTERCEPTOR SHALL BE AS MANUFACTURED BY THE JENSEN PRECAST OF SACRAMENTO, CALIFORNIA, OR APPROVED EQUAL.
2. THE GREASE INTERCEPTOR SHALL BE LOCATED AND INSTALLED OUTSIDE OF THE BUILDING.
3. THE GREASE INTERCEPTOR SHALL BE LOCATED AND/OR CONSTRUCTED IN SUCH A MANNER AS TO EXCLUDE THE ENTRANCE OF SURFACE, STORM, OR RAINWATER.
4. SIZE OF GREASE INTERCEPTOR SHALL BE APPROVED BY THE DISTRICT ENGINEER.
5. BOX DESIGN LOAD IS H2O TRAFFIC LOADING WITH 1' TO 6' OF SOIL COVER.
6. ALL EXPOSED EXTERIOR COUPLINGS SHALL BE "NO-HUB" COUPLINGS ALL INTERIOR FITTINGS SHALL BE "NO-HUB" CAST IRON OR APPROVED EQUAL.
7. INSTALL SAMPLING BOX WITHIN 3' OF THE OUTLET OF THE GREASE INTERCEPTOR.
8. GREASE INTERCEPTOR SHALL BE SET ON DRAIN ROCK.

CAPACITY IN GALLONS	JENSEN MODEL	A	B	C	D	E
2000	JP200EPE-G	5'-0"	4'-9"	6'-0"	4'-11"	15'-11"
2500	JZ2500EPE-G	5'-0"	4'-9"	6'-0"	5'-9"	16'-10"
3000	JZ3000EPE-G	5'-9"	5'-6"	6'-9"	5'-9"	16'-10"

Dublin San Ramon Services District

REVISION DATE
MAR 2012

GREASE INTERCEPTOR
2000 - 3000 GALLON CAPACITY

REVISED BY
BCD

SIGNED COPY ON FILE AT DISTRICT OFFICE

DRAWING
S-14

