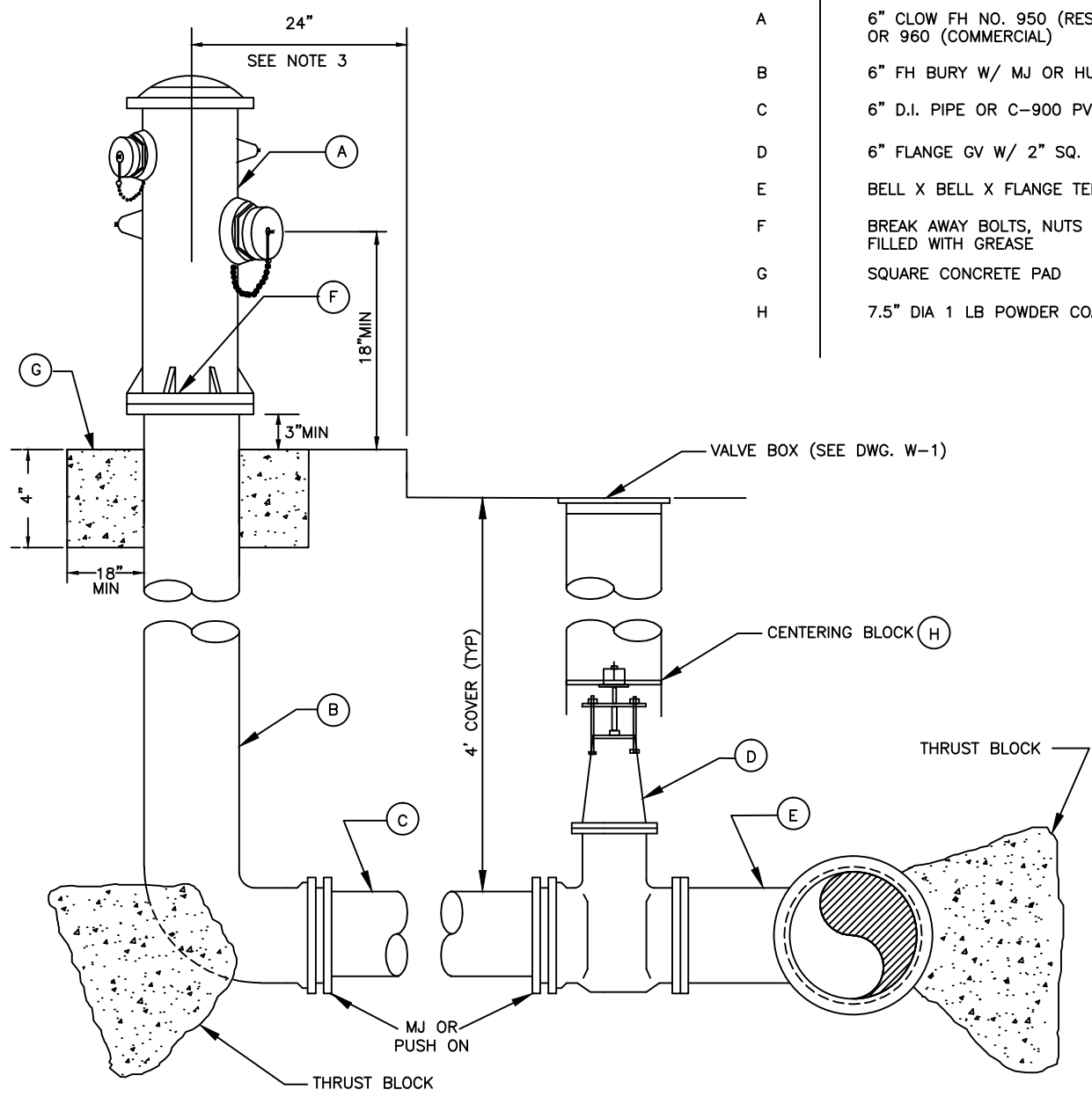


| ITEM | DESCRIPTION |
|------|--|
| A | 6" CLOW FH NO. 950 (RESIDENTIAL) OR 960 (COMMERCIAL) |
| B | 6" FH BURY W/ MJ OR HUB INLET |
| C | 6" D.I. PIPE OR C-900 PVC |
| D | 6" FLANGE GV W/ 2" SQ. NUTS |
| E | BELL X BELL X FLANGE TEE |
| F | BREAK AWAY BOLTS, NUTS ON TOP FILLED WITH GREASE |
| G | SQUARE CONCRETE PAD |
| H | 7.5" DIA 1 LB POWDER COATED |



NOTES:

- ON MAINS WHERE VALVES ARE TO BE INSTALLED ADJACENT TO TEES OR CROSSES, THE VALVES SHALL BE FLANGED X MJ WITH FLANGED END BOLTED DIRECTLY TO THE TEE OR CROSS.
- VALVE DISTANCE IN FEET TO BE MARKED ON CURB.
- SEE PLANS AND SPECIFICATIONS FOR LOCATION OF HYDRANTS. REFER TO SECTION II-B2-5.01 FOR PLACEMENT OF FIRE HYDRANTS BEHIND CURBS AND SIDEWALKS.
- REFER TO SECTION II-B1-2.03 FOR HYDRANT EXTERIOR PAINT REQUIREMENTS.

| | |
|--|---------------------------|
| Dublin San Ramon Services District | REVISION DATE DEC 2016 |
| FIRE HYDRANT INSTALLATION | REVISED BY BCD |
| SIGNED COPY ON FILE AT DISTRICT OFFICE | DRAWING W-6 |