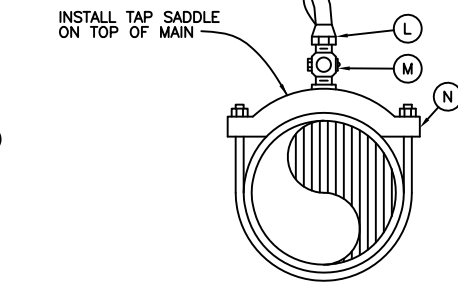


ITEM	DESCRIPTION
A	VALVE COVER (PLACER WATERWORKS NO. PWAE118M/PWAE218M, OR APPROVED EQUAL)
B	SCREW ON BUG SCREEN
C	1" DIAMETER PVC PIPE & UNION
D	ANCHOR BOLT
E	2" PVC SLEEVE
F	1" BRONZE STREET ELL
G	1" AIR RELEASE AND VACUUM RELIEF VALVE
H	2' METER BOX (B-36 CHRISTY OR APPROVED EQUAL)
I	1" BRONZE NIPPLE
J	ANGLE METER STOP FLARE OR COMPRESSION (MUELLER 300 SERIES, MCDONALD 4602BT, OR APPROVED EQUAL)
K	1" POLYETHYLENE TUBING (BLUE COLOR)
L	1" BRONZE COMPRESSION JOINT
M	1" CORP. STOP (MUELLER 300 SERIES, MCDONALD 4701BQ, OR APPROVED EQUAL)
N	ALL BRONZE SADDLE WITH DOUBLE STRAP
P	TW#10 TRACER WIRE



- NOTES:**
- SEE DRAWING W-15B FOR RECYCLED WATER SYSTEMS.
 - TW#10 TRACER WIRE SHALL BE SPIRALED AROUND POLYETHYLENE TUBING FROM CORP STOP TO THE METER BOX.
 - SEE DRAWING W-19 FOR METER BOX INSTALLATION.

Dublin San Ramon Services District	REVISION DATE MAR 2012
1" AIR RELEASE & VACUUM RELIEF VALVE INSTALLATION 6"-10" POTABLE WATER MAINS	REVISED BY BCD
SIGNED COPY ON FILE AT DISTRICT OFFICE	DRAWING W-15A