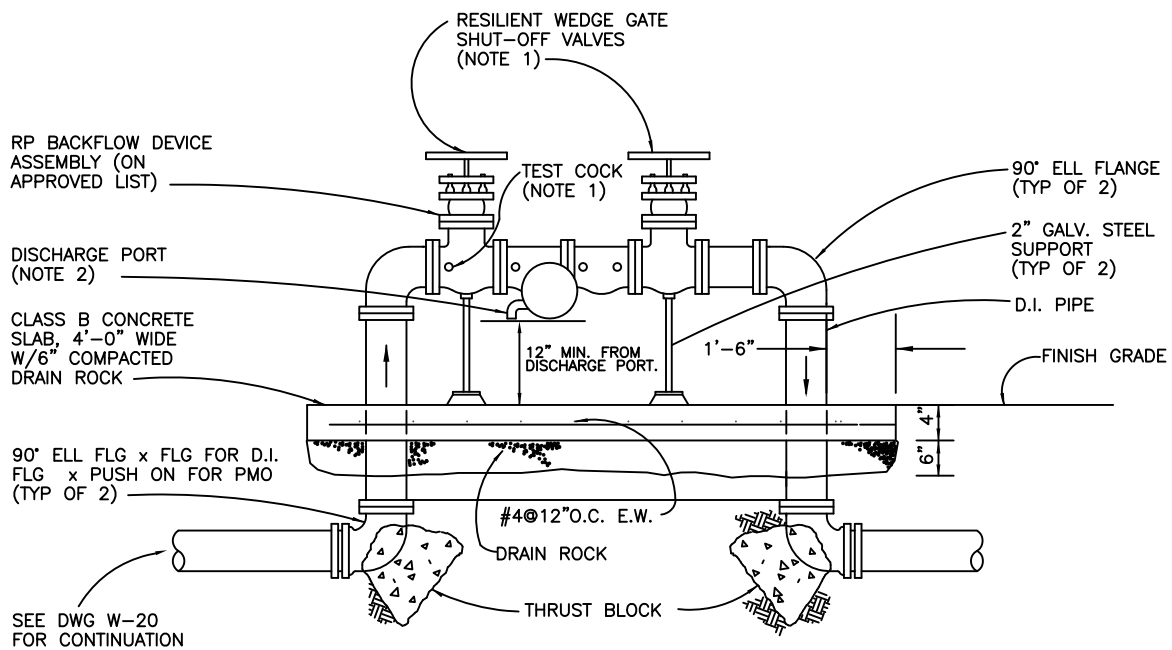


ELEVATION



DETAIL A

- NOTES:**
1. TEST COCKS AND SHUT-OFF VALVES MUST BE SUPPLIED AS SHOWN.
 2. DISCHARGE PORT MUST BE KEPT CLEAR OF OBSTRUCTION AT ALL TIMES.
 3. 2 1/2 THR 10" MUST HAVE RESILIENT SEAT WEDGE SHUT-OFF VALVES.
 4. DEVICE SHALL BE TESTED BY CERTIFIED TESTER. TEST REPORT SHALL BE SUBMITTED TO DSRSD.

Dublin San Ramon Services District	REVISION DATE MAR 2012
2 1/2" TO 10" REDUCED PRESSURE BACKFLOW PREVENTION DEVICE	REVISED BY BCD
SIGNED COPY ON FILE AT DISTRICT OFFICE	DRAWING W-22