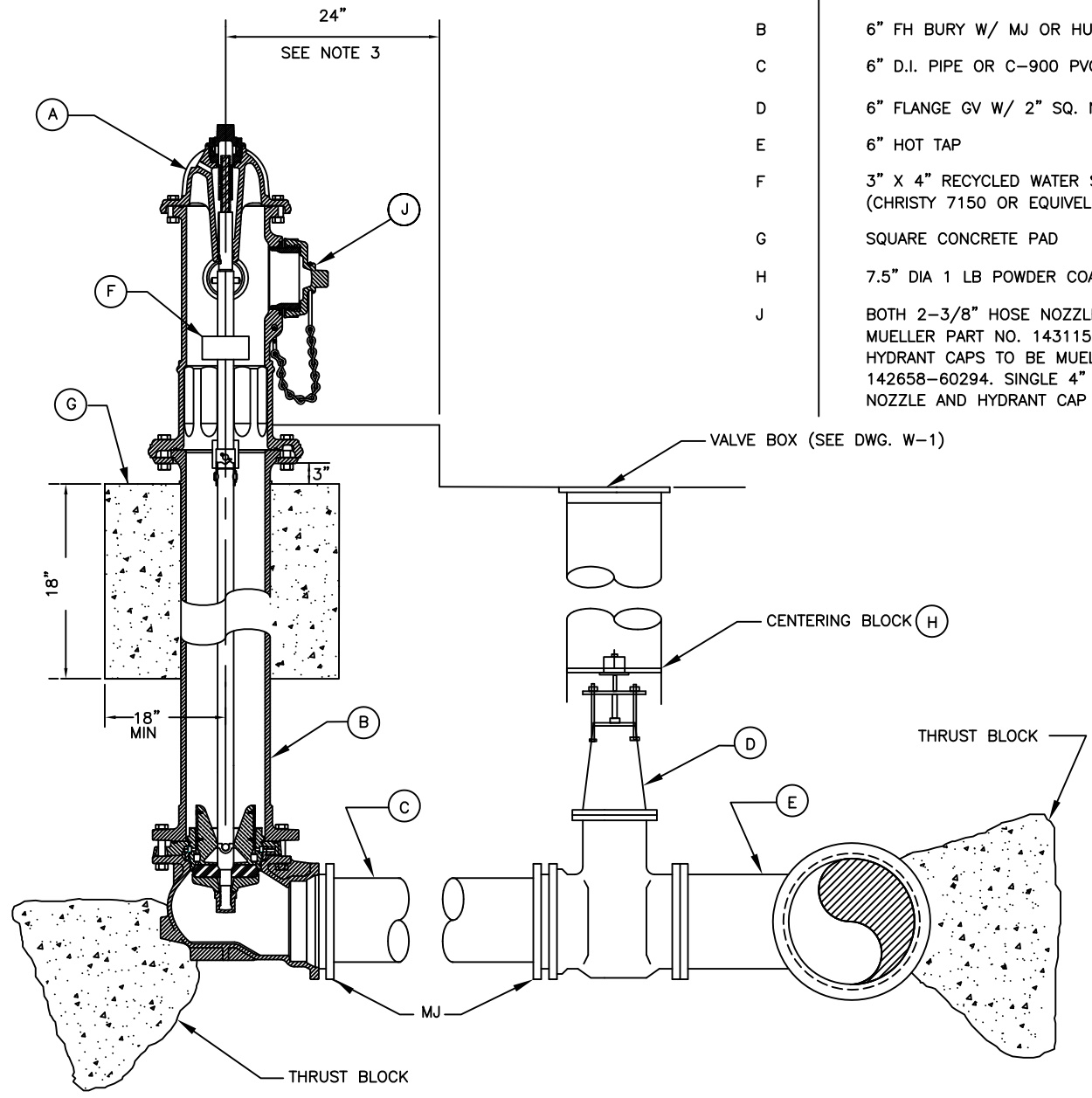


ITEM	DESCRIPTION
A	MUELLER A-423 FIRE HYDRANT (TWO 2-3/8" HOSE NOZZLES AND ONE 4" PUMPER NOZZLE)
B	6" FH BURY W/ MJ OR HUB INLET
C	6" D.I. PIPE OR C-900 PVC
D	6" FLANGE GV W/ 2" SQ. NUTS
E	6" HOT TAP
F	3" X 4" RECYCLED WATER SIGN (CHRISTY 7150 OR EQUIVALENT)
G	SQUARE CONCRETE PAD
H	7.5" DIA 1 LB POWDER COATED
J	BOTH 2-3/8" HOSE NOZZLES TO BE MUELLER PART NO. 143115-60294 AND HYDRANT CAPS TO BE MUELLER PART NO. 142658-60294. SINGLE 4" PUMPER NOZZLE AND HYDRANT CAP TO REMAIN STD.



NOTES:

1. ON MAINS WHERE VALVES ARE TO BE INSTALLED ADJACENT TO TEES OR CROSSES, THE VALVES SHALL BE FLANGED X MJ WITH FLANGED END BOLTED DIRECTLY TO THE TEE OR CROSS.
2. VALVE DISTANCE IN FEET TO BE MARKED ON CURB.
3. SEE PLANS AND SPECIFICATIONS FOR LOCATION OF HYDRANTS. REFER TO SECTION II-B2-5.01 FOR PLACEMENT OF FIRE HYDRANTS BEHIND CURBS AND SIDEWALKS.
4. HYDRANT EXTERIOR PAINT TO BE KELLEY-MOORE DURA-POXY COLOR # 70251-0608.

Dublin San Ramon Services District

REVISION DATE  
MAR 2014

RW FIRE HYDRANT INSTALLATION

DESIGNED  
RP

SIGNED COPY ON FILE AT DISTRICT OFFICE

DRAWING  
W-32