

**ALAMEDA LOCAL AGENCY FORMATION COMMISSION  
RESOLUTION NO. 2006-26**

**APPROVING AN UPDATE TO THE SPHERE OF INFLUENCE FOR THE  
DUBLIN SAN RAMON SERVICES DISTRICT**

**WHEREAS**, Government Code Section 56425 et seq. requires the Local Agency Formation Commission (LAFCo) to develop and determine the sphere of influence (SOI) of each local governmental agency within the County; and

**WHEREAS**, Government Code Section 56425(f) requires that LAFCo review and update the adopted SOI boundaries, as necessary, not less than once every five years; and

**WHEREAS**, Government Code Section 56430 requires that a municipal services review be conducted prior to or in conjunction with a SOI update; and

**WHEREAS**, LAFCo conducted a municipal services review of the services provided by the Dublin San Ramon Services District and adopted written determinations as required by Government Code Section 56430 on November 10, 2005; and

**WHEREAS**, the District was formed in 1953 as an independent district and is governed by a 5-member Board of Directors; and

**WHEREAS**, the District's boundary includes territory in Alameda and Contra Costa Counties; and

**WHEREAS**, the District's SOI was established in 1984 and is not coterminous with its bounds; and

**WHEREAS**, there have not been changes to the SOI since it was formed; and

**WHEREAS**, no change in regulation, land use or development will occur as a result of adopting this SOI; and

**WHEREAS**, in the form and manner prescribed by law, the Executive Officer has given notice of a public hearing by this Commission regarding the location of this SOI map; and

**WHEREAS**, adoption of the SOI was duly considered at a public hearing held on July 13, 2006; and

**WHEREAS**, the Alameda LAFCo heard and received all oral and written protests, objections and evidence that were made, presented or filed, and all persons present were given an opportunity to appear and be heard with respect to any matter pertaining to said action.

**NOW, THEREFORE, BE IT RESOLVED, DETERMINED AND ORDERED** that the Alameda LAFCo hereby:

1. Reduce the Dublin San Ramon Services District SOI to exclude upper map of Doolan Road near Croak Road, as generally depicted in Exhibit A attached hereto.
2. Adopt the following SOI policies:

- Policy Recommendation #1: LAFCo shall encourage ACWD, Castlewood CSA, CVSD, DSRSD, EBMUD, OLSD, USD and other districts to identify and annex, where appropriate, various unserved islands and fringe areas including those currently receiving service.
3. Consider the criteria set forth in Government Code Section 56425(e) and determine as follows:
    - a. *The present and planned land uses in the area, including agricultural and open-space lands* – The City of Dublin plans continued residential and commercial development in the eastern portion of the City. The City Urban Growth Boundary limits land use outside its western boundary. The recommended SOI supports planned land uses. City of Dublin and County policies support the provision of adequate water and wastewater services for City and County residents.
    - b. *The present and probable need for public facilities and services in the area* – The area continues to grow and service demand is expected to increase.
    - c. *The present capacity of public facilities and adequacy of public services that the agency provides or is authorized to provide* – The District has adequate water supplies for the next five years. The District requires three reservoirs and four pump stations, due to new development. The District implements water conservation practices. Water quality, drought preparedness, emergency preparedness, planning efforts, distribution system integrity, response times, and water pressure are adequate. The District’s wastewater collection system and treatment capacity are adequate. Treatment effectiveness, collection system integrity, planning efforts, and response times are adequate. In 2002, the District was penalized for exceeding effluent limitations on four occasions during construction of the District’s facilities. Otherwise, the District has complied with regulatory requirements.
    - d. *The existence of any social or economic communities of interest in the area if the commission determines that they are relevant to the agency* - The District was primarily formed to serve the residents of Dublin and San Ramon when they were both unincorporated communities.
    - e. *The existence of agricultural preserves or other important agricultural or open space land in the area which could be considered within an agency's SOI, and the effect on maintaining the physical and economic integrity of such resources in the event that such resources are within a SOI of a local governmental agency* – There is a limited amount of agricultural and open space land within the District. The District mostly serves urban areas where services are already provided so growth inducement is not a factor. No Williamson Act contracts will be affected.
    - f. *Nature, location, extent, functions & classes of services to be provided* – DSRSD provides retail water delivery to the City of Dublin and the Dougherty Valley, and wastewater collection, treatment, disposal and recycled water delivery to the City of Dublin and the southern portion of San Ramon, and to the City of Pleasanton by contract.
  4. Determine, as lead agency for the purposes of the California Environmental Quality Act (CEQA), that the SOI update is categorically exempt under Section 15061(b)(3) of the CEQA Guidelines.
  5. Direct staff to file a Notice of Exemption as lead agency under Section 15062 of the CEQA Guidelines.

\*\*\*\*\*

This Resolution was approved and adopted by the Alameda Local Agency Formation Commission at a regular meeting held on July 13, 2006, at 7051 Dublin Boulevard in Dublin, California on the motion made by Commissioner Foulkes, seconded by Commissioner Kamena, and duly carried.

Ayes: 7 (Commissioners Combs, Foulkes, Steele, Miley, Lockhart, Kamena, and Sblendorio)  
Noes: 0  
Excused: 0

\_\_\_\_\_/Janet Lockhart/

Janet Lockhart, Chair, Alameda LAFCo

Approved as to Form:

By: 

Brian Washington, LAFCo Legal Counsel

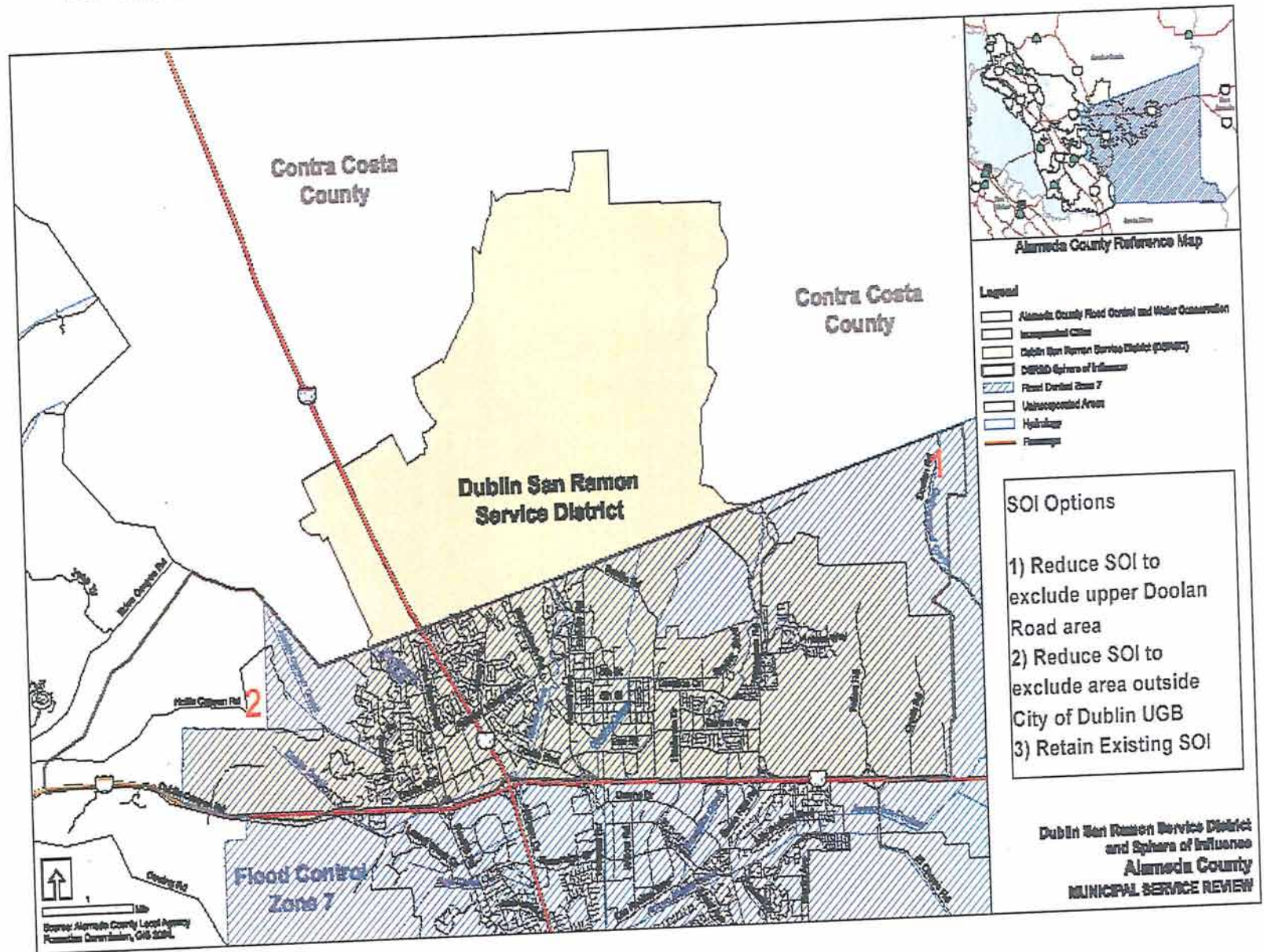
**CERTIFICATION:** I hereby certify that the foregoing is a correct copy of a resolution adopted by the Alameda Local Agency Formation Commission, Oakland, California.

Attest:   
Crystal Hishida Graff, LAFCo Executive Officer

Date: 7/27/06

Exhibit A

# Dublin San Ramon Service District



# DSRSD-Doolan Road SOI Option

