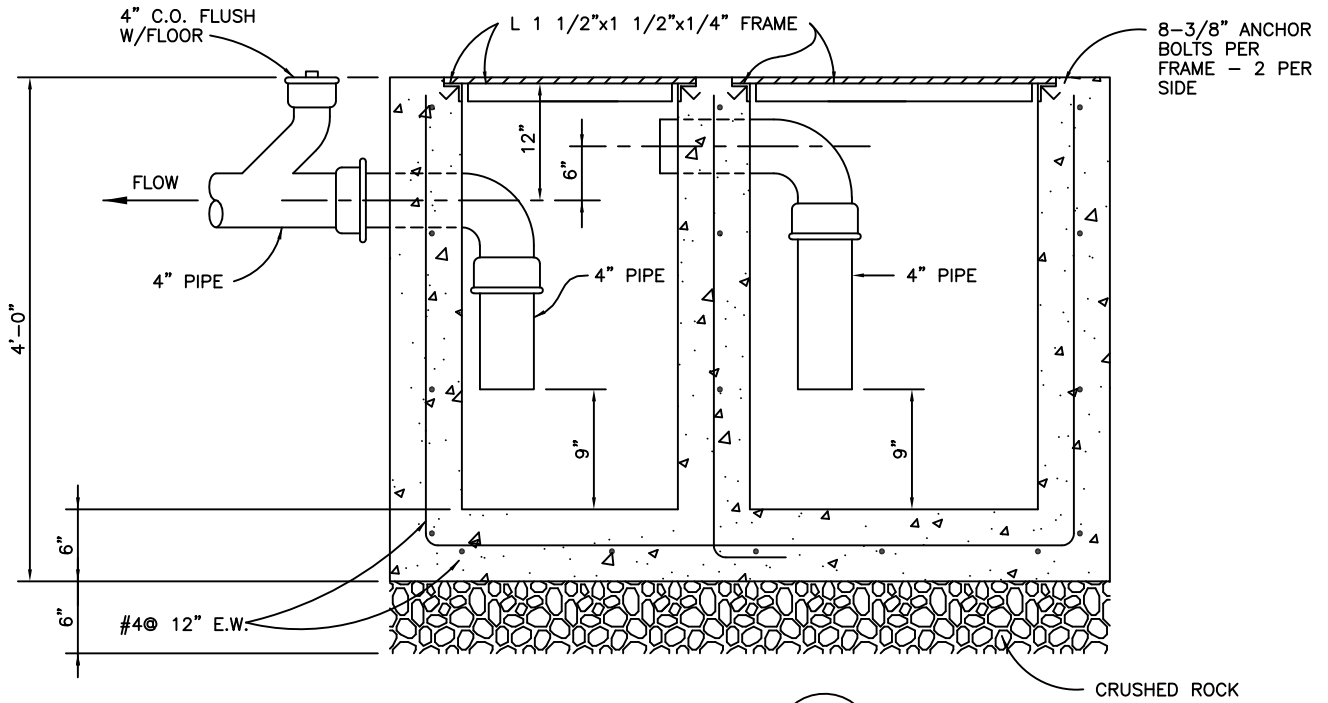


PLAN



SECTION

NTS

NOTES:

1. FLOOR SHALL DRAIN TO DRILLED PLATE COVER.
2. PIPES SHALL BE DIP, OR PVC (CAST IRON IS NOT ALLOWED).
3. TWO 18" DRAIN INLETS MAY BE SUBSTITUTED FOR CAST IN PLACE TRAP.

Dublin San Ramon Services District	DATE DEC 2019
GREASE AND SAND TRAP	DESIGNED BD
SIGNED COPY ON FILE AT DISTRICT OFFICE	DRAWING S-12