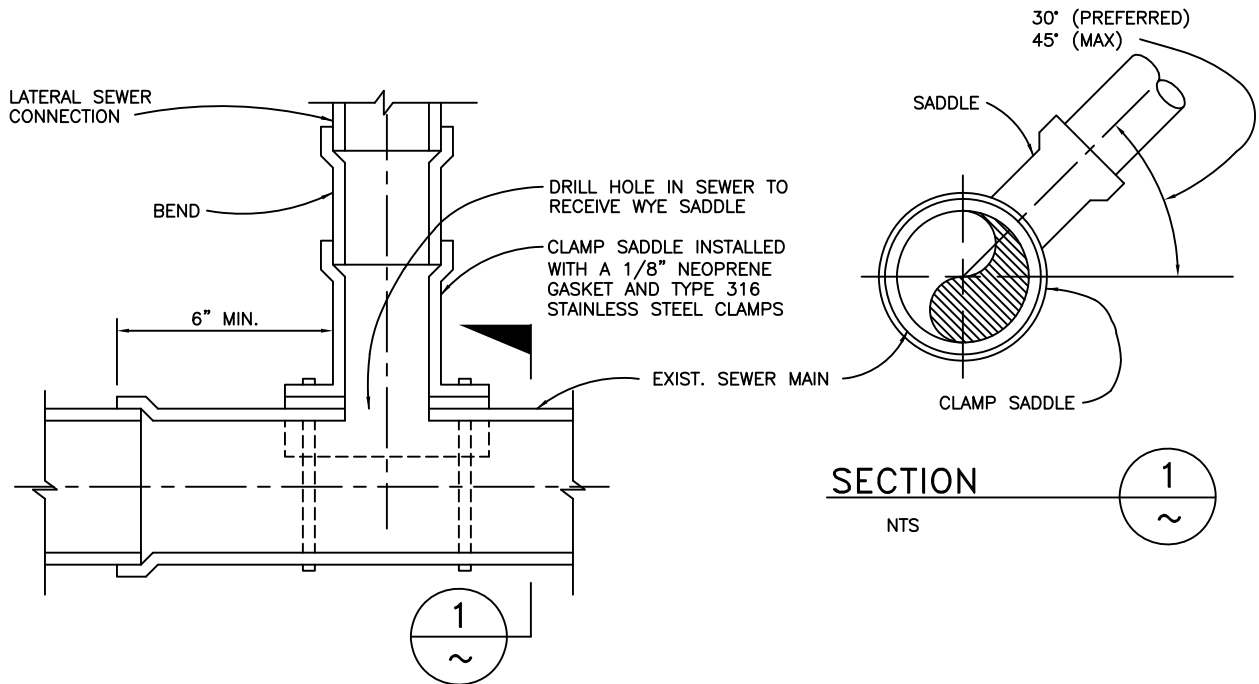


DRY CONNECTION



WET TAP CONNECTION

(SEE NOTE 2)

NOTES:

1. MANUFACTURED WYE SADDLE INSTALLED ON SEWER SECTION WITH PLAIN ENDS.
2. APPROVAL OF DISTRICT ENGINEER REQUIRED FOR WET CONNECTION.
3. PRE-CONSTRUCTION AND POST-CONSTRUCTION TELEVISION INSPECTION REQUIRED IN THE PRESENCE OF DSRSD CONSTRUCTION INSPECTOR.

Dublin San Ramon Services District

DATE
DEC 2019

LATERAL SEWER CONNECTION TO EXISTING SEWER MAIN

DESIGNED
BD

SIGNED COPY ON FILE AT DISTRICT OFFICE

DRAWING
S-9