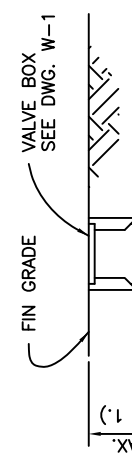
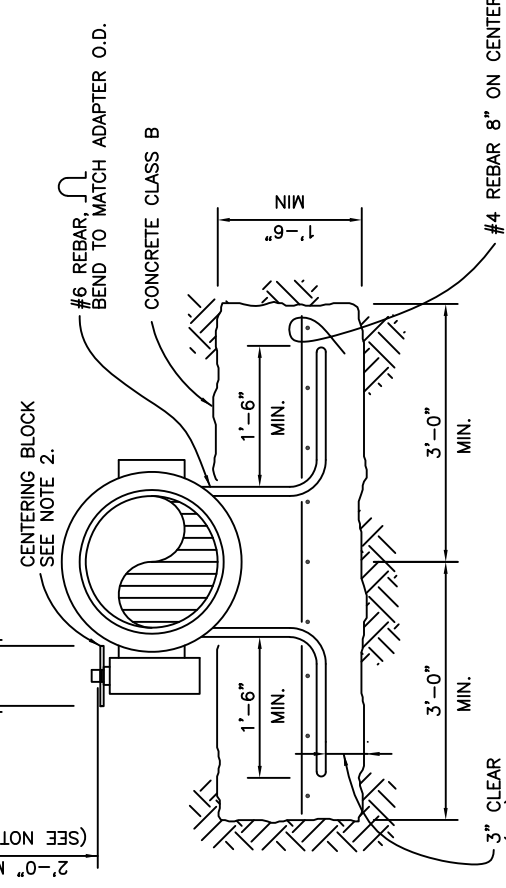


IN-LINE BFV
NTS



BFV AT TEE OR CROSS
NTS



SECTION
NTS

NOTES:

1. ADD EXTENSION SLEEVE WHEN DEPTH EXCEEDS 2'0".
2. CENTERING RING PER SECTION II-B1-2.06 OF THESE STANDARDS.
3. ALL BOLTS SHALL BE STAINLESS STEEL TYPE 316, OR APPROVED EQUAL. ANTI-SEIZE LUBRICANT SHALL BE APPLIED TO BOLT THREADS. POLYWRAP ALL FERROUS PIPE AND FITTINGS.
4. USE OF THIS DETAIL REQUIRES DISTRICT ENGINEER APPROVAL.

Dublin San Ramon Services District

BUTTERFLY VALVE INSTALLATION
14" TO 18" BFV

SIGNED COPY ON FILE AT DISTRICT OFFICE

REVISION DATE
DEC 2019

REVISED BY
BD

DRAWING
W-14