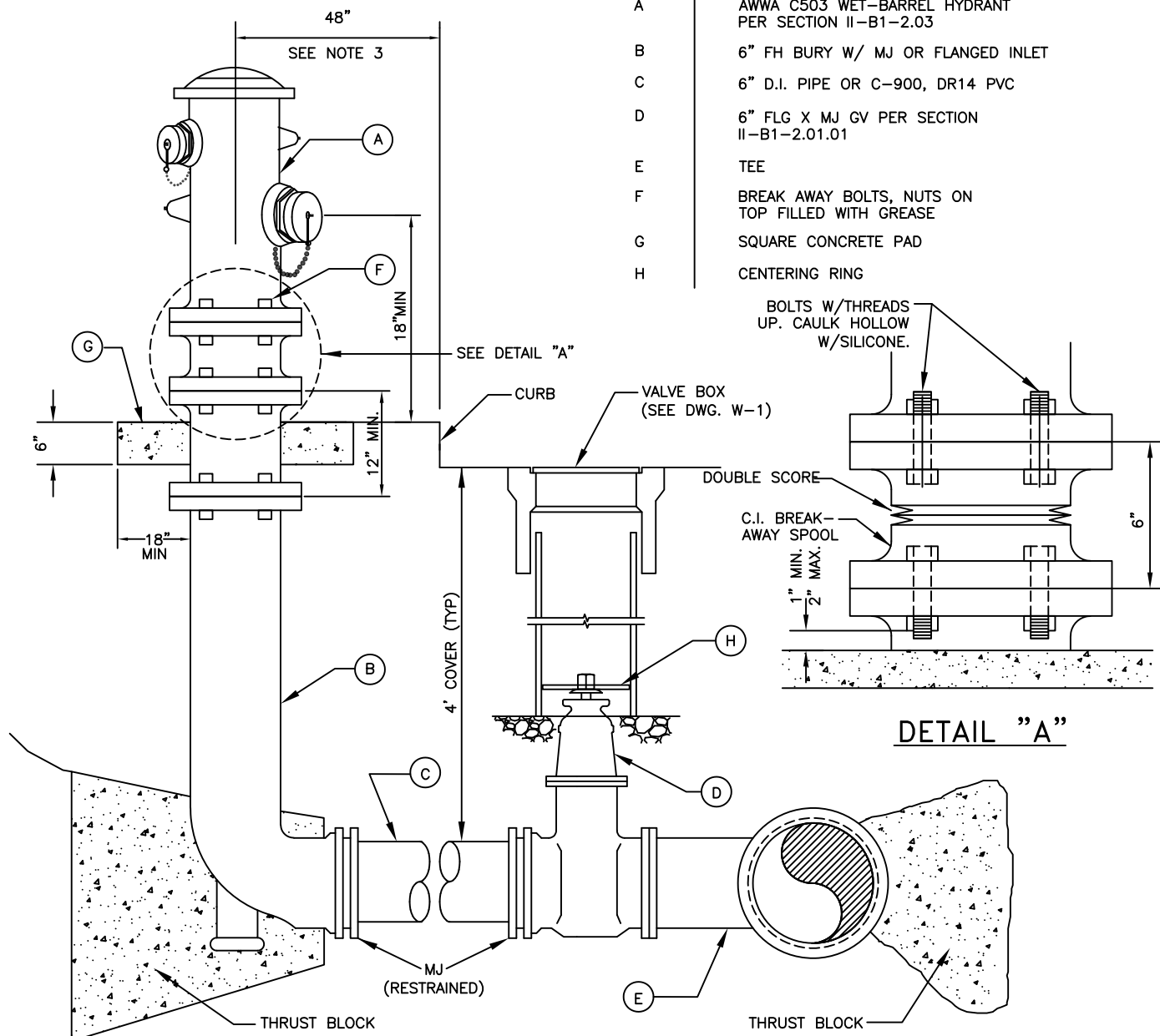


ITEM	DESCRIPTION
A	AWWA C503 WET-BARREL HYDRANT PER SECTION II-B1-2.03
B	6" FH BURY W/ MJ OR FLANGED INLET
C	6" D.I. PIPE OR C-900, DR14 PVC
D	6" FLG X MJ GV PER SECTION II-B1-2.01.01
E	TEE
F	BREAK AWAY BOLTS, NUTS ON TOP FILLED WITH GREASE
G	SQUARE CONCRETE PAD
H	CENTERING RING



**NOTES:**

1. ON MAINS WHERE VALVES ARE TO BE INSTALLED ADJACENT TO TEES OR CROSSES, THE VALVES SHALL BE FLANGED X MJ WITH FLANGED END BOLTED DIRECTLY TO THE TEE OR CROSS.
2. VALVE DISTANCE IN FEET TO BE MARKED ON CURB.
3. SEE PLANS AND SPECIFICATIONS FOR LOCATION OF HYDRANTS. REFER TO SECTION II-B2-5.01 FOR PLACEMENT OF FIRE HYDRANTS BEHIND CURBS AND SIDEWALKS.
4. REFER TO SECTION II-A7 FOR CLEARANCE BETWEEN HYDRANT AND FIXED OBJECTS.
5. REFER TO SECTION II-B1-2.03 FOR HYDRANT EXTERIOR PAINT REQUIREMENTS.
6. ALL BOLTS SHALL BE STAINLESS STEEL TYPE 316, ANTI-SEIZE LUBRICANT SHALL BE APPLIED TO BOLT THREADS. POLYWRAP ALL FERROUS PIPE AND FITTINGS.
7. TRACER WIRE SHALL BE INSTALLED ON ALL FIRE HYDRANT RUNS.

Dublin San Ramon Services District	REVISION DATE JUN 2020
FIRE HYDRANT INSTALLATION	REVISED BY BD
SIGNED COPY ON FILE AT DISTRICT OFFICE	DRAWING W-6