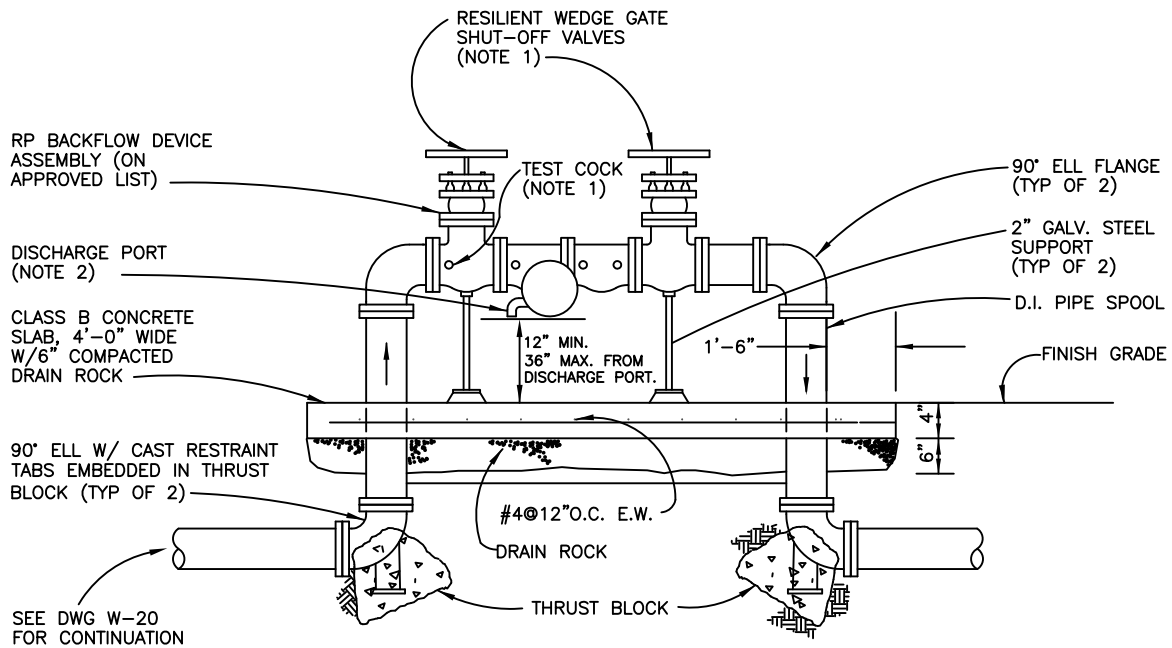


ELEVATION



DETAIL A

NOTES:

1. TEST COCKS AND SHUT-OFF VALVES MUST BE SUPPLIED AS SHOWN.
2. DISCHARGE PORT MUST BE KEPT CLEAR OF OBSTRUCTION AT ALL TIMES.
3. 2 1/2 THR 10" MUST HAVE RESILIENT SEAT WEDGE SHUT-OFF VALVES.
4. DEVICE SHALL BE TESTED BY CERTIFIED TESTER. TEST REPORT SHALL BE SUBMITTED TO DSRSD.
5. PROTECTIVE ENCLOSURE NOT SHOWN. REFER TO SECTION II-B2-7 AND DRAWING W-25 FOR ENCLOSURE REQUIREMENTS.
6. ALL BOLTS SHALL BE STAINLESS STEEL TYPE 316, ANTI-SEIZE LUBRICANT SHALL BE APPLIED TO BOLT THREADS. POLYWRAP ALL FERROUS PIPE AND FITTINGS.

Dublin San Ramon Services District	REVISION DATE DEC 2020
2 1/2" TO 10" REDUCED PRESSURE BACKFLOW PREVENTION DEVICE	REVISED BY RM
SIGNED COPY ON FILE AT DISTRICT OFFICE	DRAWING W-22