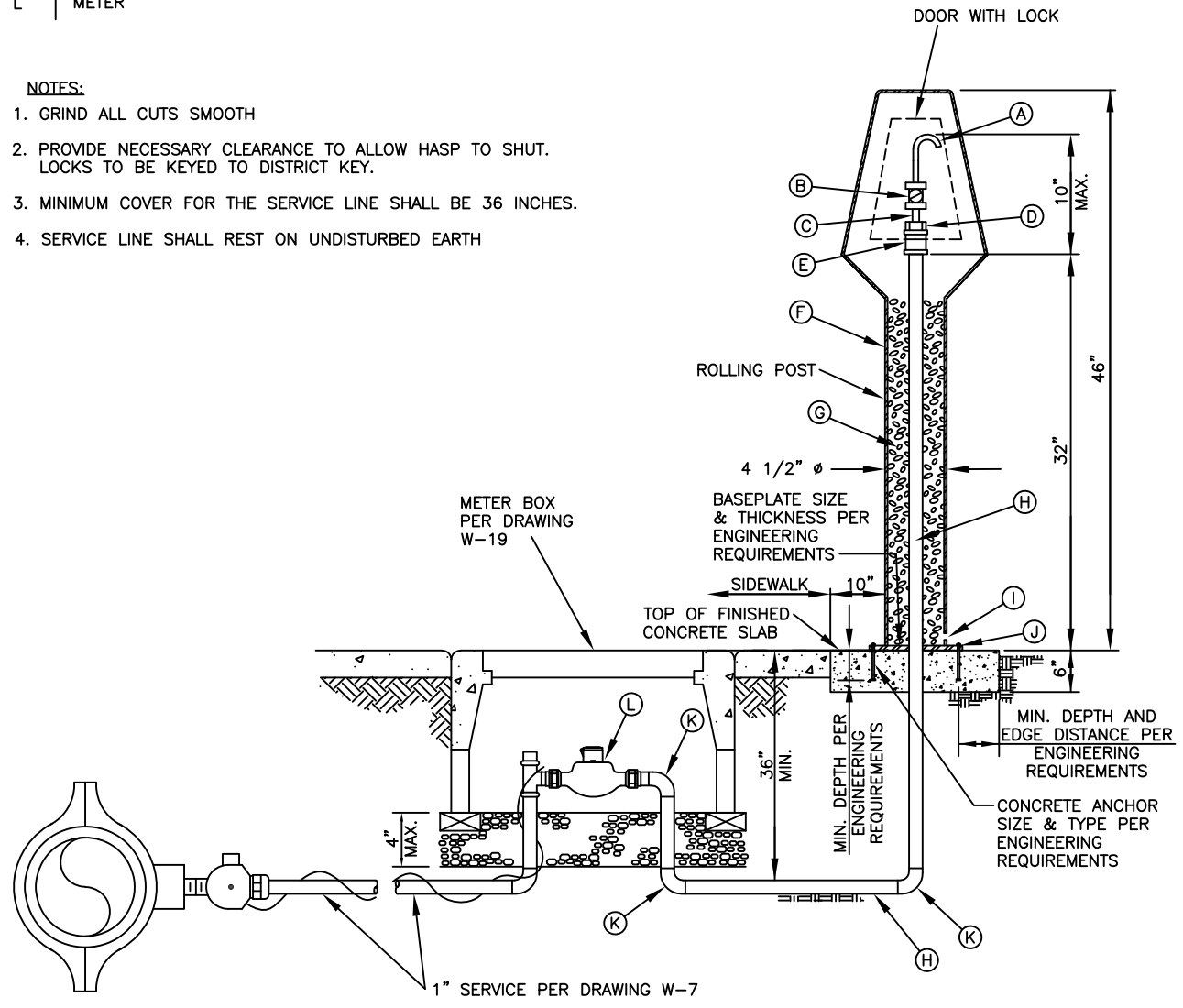


ITEM	DESCRIPTION
A	3/8" STAINLESS GOOSE NECK
B	1/2" x 3/8" BRASS OR STAINLESS VALVE
C	1/2" POLYETHYLENE TUBING
D	1" x 1/2" BRASS BUSHING
E	1" STRAIGHT BRASS COUPLING
F	POWDER COATED EPOXY STEEL HOUSING
G	PEA GRAVEL
H	1" POLYETHYLENE TUBING (BLUE)
I	1/2"Ø WEEP HOLE
J	ANCHOR BOLT
K	FLARE FITTING OR COMPRESSION JOINT
L	METER

NOTES:

1. GRIND ALL CUTS SMOOTH
2. PROVIDE NECESSARY CLEARANCE TO ALLOW HASP TO SHUT. LOCKS TO BE KEYPED TO DISTRICT KEY.
3. MINIMUM COVER FOR THE SERVICE LINE SHALL BE 36 INCHES.
4. SERVICE LINE SHALL REST ON UNDISTURBED EARTH



Dublin San Ramon Services District

REVISION DATE
DEC 2019

STANDARD
SAMPLING STATION

REVISED BY
BD

SIGNED COPY ON FILE AT DISTRICT OFFICE

DRAWING
W-26