

**DUBLIN
SAN RAMON
SERVICES
DISTRICT**



7051 Dublin Boulevard
Dublin, California 94568
Phone: 925 828 0515
FAX: 925 829 1180
www.dsrdsd.com

March 14, 2015

Mr. Robert Brownwood, P.E.
District Engineer
San Francisco District
California Department of Public Health
850 Marina Bay Parkway
Building P, 2nd Floor
Richmond, CA 94804

Mr. Bruce Wolf, Executive Officer
Regional Water Quality Control Board
San Francisco Bay Region
1515 Clay Street, Suite 1400
Oakland, CA 94612

Subject: 2015 Recycled Water Use Annual Report

Dear Mr. Brownwood and Mr. Wolf:

Enclosed please find the 2015 Annual Recycled Water Report of the seventh season for the San Ramon Valley Recycled Water Program, a joint project of the Dublin San Ramon Services (DSRSD) and East Bay Municipal Utility District (EBMUD), together forming a Joint Power Authority called DERWA (DSRSD/EBMUD Recycled Water Authority).

Questions concerning this report may be directed by e-mail to Levi Fuller, fuller@dsrdsd.com.

I certify under penalty of law that this document and all attachments are prepared under my direction or supervision in accordance with a system designed to assure that qualified personnel properly gathered and evaluated the information submitted. Based on my inquiry of the person or persons who managed the system, or those directly responsible for gathering the information, the information submitted, to the best of my knowledge and belief, is true, accurate, and complete.

I am aware that there are significant penalties for submitting false information, including the possibility of fine and imprisonment for knowing violations.

Sincerely,

LEVI FULLER
DSRSD Wastewater Treatment Plant Operations Supervisor

cc: Jim Bewley, DERWA
Michael Tognolini, EBMUD
Jill Duerig, Zone 7 Water Agency
John Archer, DSRSD

Linda Hu, EBMUD
Florence Wedington, EBMUD
Dan Gallagher, DSRSD
Dan McIntyre, DSRSD
Rhodora Biagtan, DSRSD
Matt Katen, Zone 7 Water Agency
Raj Gumber, DSRSD
Maurice Atendido, DSRSD
Clint Byrum, DSRSD
Stefanie Olson, DSRSD
DSRSD Operations Office Files

SAN RAMON VALLEY RECYCLED WATER PROGRAM
2015 IRRIGATION SEASON
Recycled Water Use Annual Report



Prepared by Dublin San Ramon Services District
for the San Ramon Valley Recycled Water Program

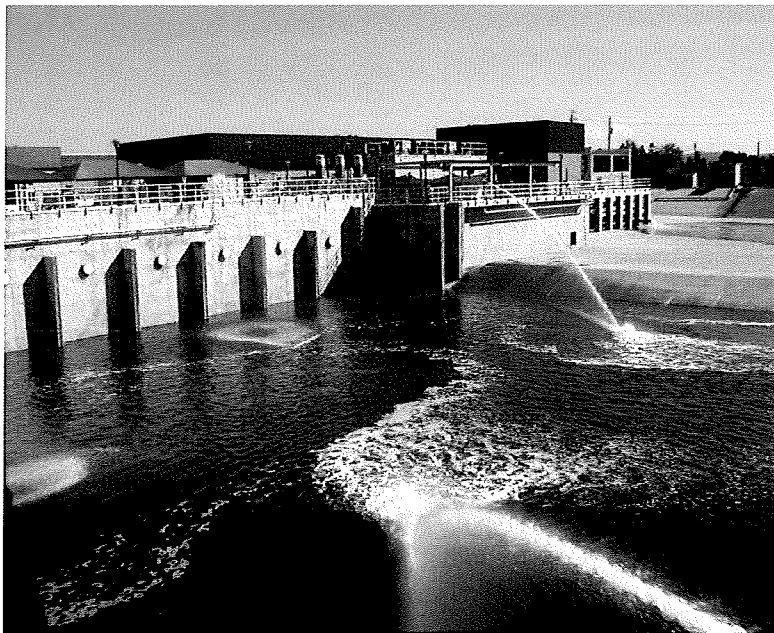


I. Introduction

The purpose of this report is to satisfy the 2015 annual reporting requirements of the Regional Water Quality Control Board (RWQCB) Order 96-011 (the Order), General Water Reuse Requirements for: Municipal Wastewater and Water Agencies. This report contains all of the requirements listed in the Order's Attachment C, Self-Monitoring Program.

II. DSRSD/DERWA Recycled Water Treatment Processes

The DERWA recycled water system first began delivering water on February 1, 2006, and the continuous backwash sand filter and ultra violet disinfection system (SF-UV) first began producing recycled water on May 24, 2006. The DERWA recycled water production facility also has a micro-filtration ultraviolet (MF-UV) disinfection plant which operates in the winter low demand months, and serves as a summer peak demand back-up to the SF-UV plant. During 2015, a total of 3,132 acre-feet (1,020 million gallons) of recycled water was produced and delivered to DSRSD's and EBMUD's customers (based on the production plant's PSR1 Flow meter). Customer demand determined by a summation of all customer meters totaled 3,161 acre-feet (1030 million gallons), and EBMUD's customer's totaled 711 acre-feet (232 million gallons).



During 2015 irrigation season the MF-UV plant operated for a total of 67 days (compared to 87 days in 2014). The SF-UV plant operated for 257 days (compared to 251 days in 2014). There were several days when both the SF-UV and MF-UV plants were in production.

2015 Season Highlights

January 2015: Mean temperature was 50.5°F, with a maximum recorded temperature of 63.6°F. The month of January was cooler than in the previous year but there was no recorded rainfall. Recycled water production occurred on twenty-seven days during the month and totaled 22.51 MG or 0.73 MGD, produced using both the MF-UV and SF-UV system throughout the month. To facilitate routine maintenance of an EBMUD reservoir, 2.85 MG of potable water was added to the recycled water system at R100 from an EBMUD potable water reservoir.

February 2015: Mean temperature was 56.0°F, with a maximum recorded temperature of 67.9°F. Rainfall during the month totaled 2.71 inches. Recycled water production occurred on all twenty eight days during the month and totaled 20.33 MG or 0.73 MGD, all produced using both the SF-UV and MF-UV systems.

March 2015: Mean temperature was 59.1°F, with a maximum recorded temperature of 74.3°F. Rainfall totaled 0.03 inches. On March 8th we switched from using MF-UV to using SF-UV. Recycled water production for the month totaled 64.60 MG or 2.08 MGD, produced using both the MF-UV and SF-UV systems.

April 2015: Mean temperature was 57.8°F, with a maximum recorded temperature of 71.8°F. Rainfall totaled 1.45 inches. Recycled water production occurred on twenty-five days during the month and totaled 93.28 MG or 3.11 MGD using SF-UV facility.

May 2015: Mean temperature was 58.2°F, with a maximum recorded temperature of 73.6°F. There was 0.47 inches of rainfall during the month, so recycled water production occurred each day during the month and totaled 103.56 MG or 3.34 MGD. All recycled water was produced using the SF-UV facility.

June 2015: Mean temperature was 69.2°F, with a maximum recorded temperature of 84.5°F. There was 0.46 inches of rainfall during the month. Recycled water production occurred daily during the month and totaled 135.31 MG or 4.52 MGD, all produced using the SF-UV system.

July 2015: Mean temperature was 70.2°F, with a maximum recorded temperature of 85.2°F with 0.18 inches of rainfall. Recycled water production occurred daily during the month and totaled 162.27 MG or 5.23 MGD, all produced using the SF-UV system.

August 2015: Mean temperature was 72.0°F, with a maximum recorded temperature of 87.3°F and no rainfall. Recycled water production occurred daily during the month and totaled 150.51 MG or 5.02 MGD, all produced using the SF-UV system.

September 2015: Mean temperature was 69.2°F, with a maximum recorded temperature of 86.3°F. Rainfall was only 0.02 inches. Recycled water production occurred daily during the month and totaled 140.61 MG or 4.69 MGD, all produced using the SF-UV system.

October 2015: Mean temperature was 65.5°F, with a maximum recorded temperature of 85.1°F. There was no rainfall during the month. Recycled water production occurred daily during the month and totaled 101.67 MG or 3.28 MGD.

November 2015: Mean temperature dropped to 49.1°F, with a maximum recorded temperature of 64.1°F. Rainfall totaled 2.59 inches and recycled water demands decreased. The SF-UV system was turned off for the season on November 16, and the MF-UV system began producing recycled water on November 17. Recycled water produced dropped to 15.79 MG or 0.53 MGD.

December 2015: Mean temperature was 46.7°F, with a maximum recorded temperature of 57.9°. Rainfall totaled 4.25 inches. Recycled water demands continued to decrease and recycled water production occurred intermittently during the month using the MF-UV system and totaled only 8.29 MG or 0.27 MGD.

III. Recycled Water Monitoring

The Order requires the District to perform recycled water monitoring on a monthly basis during periods recycled water is in use. The sample locations vary depending on which treatment process is in use during the reporting period. Samples are either collected at the MF/UV, SF/UV or on occasion Pump Station 1 (PS1). Collected samples are analyzed for the following parameters: total coliform, turbidity, dissolved oxygen, dissolved sulfides (if DO < 1 mg/l). To view 2015 monthly recycled water monitoring results, refer to Attachment B of this report. During 2015, 1.25 mg/l was the minimum DO level analyzed. The monthly average dissolved oxygen level for recycled water was 4.25 mg/l during the irrigation season.

During 2015 irrigation season the MF-UV plant operated for a total of 67 days (compared to 87 days in 2014). The SF-UV plant operated for 257 days (compared to 251 days in 2014). There were several days when both the SF-UV and MF-UV plants were in production. The UV system is designed to bypass flow (i.e. cease production) when the UV dosage is below the minimum setpoint (MFUV - 80 mj/cm²; SFUV -100 mj/cm²).

Upon the annual review of the UV data apparently there were 18 events where UV dosage was below setpoint but the plant failed to go into bypass. We suspect (although we cannot be sure) that some of these events are the result of errors in the computer collections of data. One example of this suspicion is the data contains several events which lasted for 59 minutes and started and ended at the same time on the days of the events. In addition, operations staff cannot recall any events where scada placed the plant into bypass and a review of the dosage data at the time showed that the plant had been running in a low dosage condition for more than a few minutes. Also during the past year the software program that is used to collect scada data was upgraded. Perhaps some the upgrade to the new scada data collection software caused some problems with data storage and collection. However, the chart below notes all events where the scada data indicates either a low UV intensity whether the event was real or a scada error in data collection. We also noted the laboratory bacti results for each of those days:

Date	Minimum Dosage		Daily Bacti(MPN)
	100 mj/cm ²	Duration (Min)	
6/18	43.1	2	2
6/20	98.6	26	<2
7/2	0.0	4	<2
7/4	91.6	190	<2
7/5	99.1	293	<2
7/6	90.3	110	<2
7/7	98.9	236	<2
7/13	85.6	3	<2
7/28	95.2	3	<2
7/29	0.0	2	<2
8/10	85.0	59	<2
8/29	0.0	59	<2
9/7	98.36	59	<2
9/8	98.36	1382	8
9/8	11.06	59	8
9/9	11.06	59	2
9/14	92.84	59	2
9/18	96.6	58	<2
9/20	97.15	58	<2
10/26	85.23	1hr & 59mins	<2
11/27	9999	480	<2
12/3	9999	1440	<2

In the future we will run reports on the UV data and create a work order to test the low UV dosage bypass logic both on a more frequent basis so that errors in UV data collection or programming can be identified and corrected in a timelier manner. There were no known violations of coliform or turbidity during the 2015 irrigation season.

IV. Progress and Results of the Recycled Water Program

a. Recycled Water Program Expansion

The District continues to expand its recycled water service to eastern Dublin and Dougherty Valley in Contra Costa County. Developers are required to install recycled water mains within their development and connect irrigation services for streetscapes, parks, schools, commercial areas, and multi-family residential areas. The District has been expanding its recycled water distribution system to established areas of central and western Dublin.



The District also provides recycled water to the City of Pleasanton under contractual agreement. City of Pleasanton is currently in the process of installing recycled water distribution mains in order to convert established sites such as parks, schools, and business parks to recycled water. At this time, the city's Val Vista Park adjacent to the District's recycled water treatment plant is using recycled water. Once completed, the City of Pleasanton's recycled water project is projected to save approximately 1,381 acre-feet of potable water annually.

In response to the state drought, the District expanded its recycled water distribution system to retrofit older, more established areas of Dublin, thereby permanently reducing potable water demand by approximately 347 acre-feet annually. Expansion of the recycled water distribution system to western Dublin was completed in January of 2016. The system will serve existing schools, parks and streetscapes, and semi-public areas in western Dublin. In addition, the recycled water system was extended in May of 2015 to serve existing institutional facilities within Alameda County properties in Dublin. These facilities include the Santa Rita Jail, county sheriff offices, county emergency services, the animal shelter, and California Highway Patrol facility. The District was able to expand the recycled water distribution system to established areas because it was awarded a Proposition 84 Emergency Drought Grant from the State.

b. Special Studies or Projects Related to Recycled Water Program

Expansion of Recycled Water Treatment Facility and Pump Station

DERWA, a joint powers authority between EBMUD and DSRSD, plans to expand the recycled water sand filtration and ultraviolet (UV) disinfection facility to meet the increasing demands for recycled water for DSRSD, City of Pleasanton, and EBMUD. In step one a sixth sand filter will be added and online by May of 2016 in order to meet additional demand for customers of the City of Pleasanton. The sixth filter will increase the capacity of the sand filtration plant by about 1.3 mgd. The second phase of the expansion will seek to expand the facility

capacity to about 16 mgd. This expansion will include the addition of high-rate ballasted flocculation basins upstream of the existing tertiary filters. This will improve the quality of the filter feed allowing the sand filters to operate at a higher loading rate. In addition, the project will add influent pumps, UV modules and recycled water distribution pumps. The total estimated cost for the expansion is \$17 million. The District is currently seeking \$6 million in Title XVI federal grant funds for this project and additional state funds. Planning and design of the project has commenced. Construction is schedule for 2017.

Study the Potential for Potable Reuse in the Tri-Valley

Tri-Valley agencies and cities established a Tri-Valley Water Policy Roundtable, consisting of Board and council members and executive managers from the respective agencies to strategize on policy direction to improve the reliability of the Tri-Valley's water supply. Alternatives considered include indirect and direct potable reuse. In the upcoming year, the District will work with Zone 7, the water wholesaler, and other water retailers in the Tri-Valley to develop a feasibility study for indirect potable reuse.

c. Recycled Water Supply

Current recycled water projections show that recycled water demands may soon exceed available supply during peak demand periods. The District is currently working with neighboring agencies to seek additional sources or supply for making recycled water.

V. Residential Recycled Water Fill Stations

Program Background

In 2014, the District received approval from the California Department of Public Health and the Bay Area Regional Water Quality Control Board to open a recycled water fill station to dispense *free* tertiary treated recycled water to residential customers. The purpose of the program is to aid customers in saving valuable landscaping during the severe drought while maintaining compliance with the District's mandatory potable water use restrictions. The District anticipated there would be some interest in the program, but did not expect the tremendous amount of interest it actually generated. Prior to opening day, June 12, 2014, the District already had over 50 residential customers signed up on a waiting list. By the end of December 2014, 495 residential customers were participating in the program and 2.304 MG of recycled water had been distributed.



Prior to obtaining recycled water for the first time, residential users must complete and submit a Recycled Water Use Agreement Form, receive training, obtain a wallet card with a bar code sticker, and install recycled water stickers on all of their containers. During each pickup customers must show the attendants their wallet ID card. The attendants scan the bar code and enter the gallons of recycled water the customer will be collecting. Customers are limited to a maximum of 300 gallons per trip and the minimum container size allowed is 1gallon, however users are limited on how many trips they can make in a day. The fill station is not limited to District customers, so it is open to any area resident that completes a User Agreement and receives the required training.

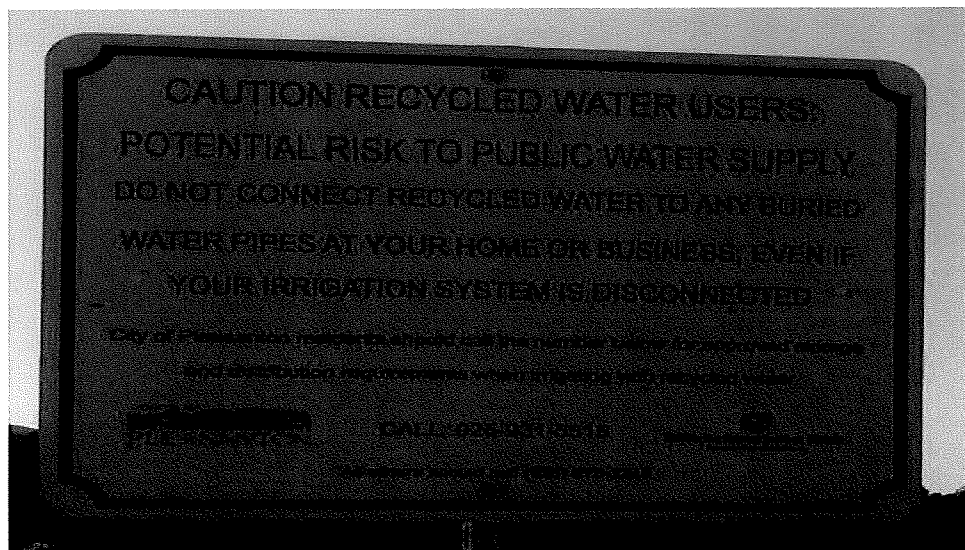
In 2015, participation in the program surged to over 3,600 participants and over 28 MG of recycled water was transported from fill stations in buckets, jugs, drums, and/or totes. In fact, the gallons hauled from the residential fill station surpassed the gallons hauled by construction contractors using the commercial fill station by 2.4 MG. Fill station customers are primarily from the following cities:

- Pleasanton 46%
- Dublin 18%
- San Ramon 13%
- Livermore 11%
- Danville 3%
- Castro Valley 3%
- Other Bay Area cities (consists of 50 cities) 6%

The Residential Recycled Water Fill Stations

The main fill station is located at the District's recycled water treatment facility in Pleasanton, CA. Initially the fill station started with 3 spigots at back-in stations. Due to high demand the fill station has now been expanded to 28 back-in stations and five drive-through stations for customers towing trailers. During the peak months staffing was increased to three attendants on duty, and the number of customer trips ranged from 800 to 1,300 a day. As the summer months went on demand for the fill station continued to increase, causing the District to increase the number of days the facility was open and extending the hours of operation. By the end of summer, the Pleasanton fill station was open seven days a week from 10:00 a.m. to 7:00 p.m. and Saturday and Sunday from 8:00 a.m. to 3:00 p.m.


On June 24, 2015, the District opened a second residential recycled water fill station at the City of Dublin's Safety Complex located on Dublin Boulevard. Eight back-in fill stations were installed, and additional attendants were hired to operate the new fill station. Due to the more limited site constraints, customers with trailers were directed to use the main fill station in Pleasanton. The hours of operation at the Dublin Fill Station were Monday, Wednesday, and Fridays from 9:00 a.m. to 4:00 p.m. The Dublin fill station averaged between 300 and 400 customer trips a day during the peak summer months. In October 2015 the District closed the Dublin Fill Station due to decreasing customer traffic and cooler temperatures. The residential fill station at the treatment plant has remained open two days a week throughout the winter, but does close during rain events.



Ensuring Compliance with Requirements

Due to the popularity of the program, the amount of recycled water being collected, and a few reports received from the public the District decided to take further action to ensure proper use of recycled water. The following efforts were taken to remind users of the program's do's and don'ts:

1. Posted signs at the fill stations that state: "Do not connect recycled water equipment to buried irrigation systems. Violators are subject to fines up to \$1,000 and loss of privileges."
2. Sent post cards to fill station customers as another reminder of the rules regarding use of recycled water



Dublin San Ramon Services District
7051 Dublin Boulevard
Dublin, CA 94568-3018

Water, wastewater, recycled water

SAFE USE OF RECYCLED WATER

The District is committed to protecting public and environmental health, complying with all legal and regulatory statutes, and providing reliable, high-quality water service. Providing free recycled water for irrigation is our way of helping the community get through this extreme drought. However, we must maintain our good standing with the regulators or the regulators will shut down the program. Please, use the recycled water to irrigate your landscapes per the *User Agreement* and your plants will be able to survive the drought.

RULES:

1. Do not store recycled water on site.
2. Do not connect recycled water to your irrigation pipes in the ground.
3. Do not use recycled water in your buried pipes.
4. Do not sell recycled water or your services to provide it to others.

Violations of these rules are against the law.

Violators could:

- Be fined up to \$1,000.
- Lose the privilege of hauling recycled water.
- Have your drinking water service temporarily shut off.
- Be required to reimburse the District for costs associated with assuring the safety of our drinking water supply because your actions may have contaminated it. Costs start at \$1,000 and vary based on the extent of contamination of the drinking water supply.

*If you have questions or want to report a violator, contact Stefanie Olson,
(925) 875-2245 or sohons@drrsd.com*

A MESSAGE FOR RESIDENTIAL RECYCLED WATER FILL STATION USERS



IMPROPER HANDLING OF RECYCLED WATER IS A VIOLATION OF THE LAW.

THIS IS SERIOUS.

ONE PERSON COULD RUIN IT FOR EVERYONE AND SHUT DOWN THE ENTIRE PROGRAM!

IF YOU BREAK THE RULES

POOF

READ THE RULES
(see back of card)



Dublin San Ramon Services District
Water, wastewater, recycled water

3. Conducted site inspections of residential fill station customer's use areas.

The District contracted with RMC Water and Environment to perform site inspections of recycled water distribution systems at the property of residential fill station customer's to ensure that they are there are using recycled water appropriately and there are no illegal connections. RMC staff has experience with cross connection inspections and are certified with California-Nevada AWWA as a Backflow Prevention Tester and as a Cross Connection Control Specialist, which was a qualification requirement for this project.

By using data gathered from the residential users of the fill stations (i.e. via the bar code scanners), it is possible to create a list of fill station customers and rank them from highest to lowest consumers. The highest volume consumers were selected for inspections. In addition, inspections were conducted at customer's sites where the District received reports from the public regarding onsite storage. Eighty inspections of fill station users were conducted within the District's and EBMUD's service areas. From those inspections, two customers were found applying recycled water through below-ground irrigation systems, and one customer admitted to connecting recycled water to his buried irrigation system but disconnected it once he reviewed the District's outreach material. The customer's wallet ID cards were confiscated and not returned until compliance with the District's requirements was met. Customers are unable to obtain recycled water without a valid wallet ID card. No cross connections were found during the inspections.

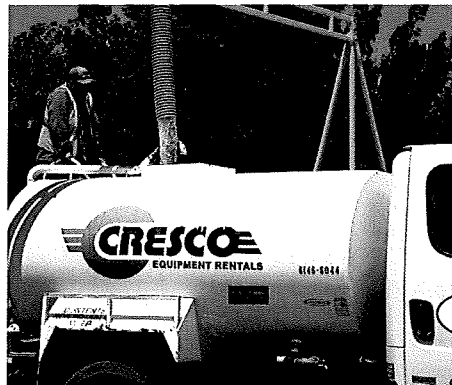
Since the fill stations are open to residents from all over the area, there are residential users taking recycled water to homes located outside the District's jurisdictional authority. The District has been corroborating with other water agencies to ensure compliance with public health and safety regulations. The District has provided respective water agencies with a list of fill station users within their service areas. RMC staff conducted some inspections outside the District's service area, and if issues were found they were forwarded to the appropriate water agency.

Conclusion

The community has really embraced this program. Many residential customers have realized recycled water is a valuable resource. Here are some phrases the inspector routinely heard from fill station users: "it is therapeutic," "habit forming," "plants love it," "my grass has never been greener," and "love the program." The opening of the residential fill stations has significantly improved customer's opinions and comfort level with the use of recycled water.

VI. Commercial Recycled Water Fill Stations & Recycled Water Hydrant Users

The District's commercial fill station is located at the recycled water treatment facility and has been operational since 2007. The installation of recycled water fire hydrants within Dublin and Dougherty Valley began in 2008. Last year's severe drought and mandatory water restrictions caused a significant increase in commercial demand for recycled water. Fill station and temporary hydrant users (i.e. temporary construction meter users) are required to obtain a recycled water use permit from the District. The District currently has about 100 permitted commercial fill station users and about 92 purple hydrant users. During 2015 the commercial fill station program distributed 25.72 MG, and commercial construction meters distributed another 60.08 MG of recycled water.



To accommodate the increase in demand, the District upgraded the commercial fill station with an overhead fill hose capable of a maximum flow rate of 1,000 gallons per minute. Typical loads are between 2,000 to 4,000 gallons. Commercial users are given a personal identification number (PIN) so they can enter the locked gate to access the fill station twenty-four hours a day, seven days a week.

The District has seventeen recycled water hydrants located throughout central and eastern Dublin and Dougherty Valley. Customers are not allowed to use potable water hydrants due to mandatory water use restrictions. Customers are directed to use recycled water and must either sign up to use the commercial fill station or obtain temporary recycled water hydrant meters, providing the proposed use is allowed under Title 22, such as dust control, soil compaction, street sweeping, surface washing, and landscape irrigation.

Delivery of Recycled Water

Commercial haulers have contacted the District to see if it is possible to deliver recycled water to residential and commercial customers for use on their landscaping. District staff contacted the State Water Resources Control Board,

Division of Drinking Water, and the Bay Area Regional Water Quality Control Board to help determine if this type of recycled water distribution would be acceptable under the District's current Recycled Water Use Permit 96-011.

After conversations with regulatory agencies, the District decided to allow commercial haulers to haul recycled water to residential and commercial properties, but only if they apply it directly onto the customer's landscaping. Haulers are not allowed to transfer recycled water into storage tanks at residential properties. Before a hauler can apply recycled water at a customer's site, the customer must first complete the District's Residential Fill Station Use Agreement, receive training from District staff, and obtain a wallet card to ensure they are fully aware of the use regulations. Commercial haulers applying recycled water for residential and commercial properties are permitted under the District's commercial hauler program. The District's Commercial Water Reuse Permit has been updated to reflect the program changes and to view the updated Water Reuse Permit. Please refer to Attachment D.

VII. User Compliance Program Review and Results

Compliance Program Background

Ordinance 301 and the District's Recycled Water Use Guidelines outline the requirements and recommendations customers are to follow in order to achieve compliance with Title 22 and Order 96-011. The Recycled Water Use Guidelines were revised in February of 2015, to include guidelines for recycled water retrofit sites due to the expansion of recycled water into existing areas of Central and Eastern Dublin. To view the District's current Recycled Water Use Guidelines go to <http://www.drsrd.com>.



At this time, the District permits the following uses for recycled water:

- Landscape irrigation
- Toilet and urinal flushing
- Dust control and construction grading
- Industrial uses
- Pressure washing for surface cleaning

Recycled Water Customers Compliance Summary

The District currently has 288 permanent recycled water irrigation use sites. Of those sites, 264 registered recycled water consumption in CY 2015; and 3,600 customers using the District's residential fill station program. Additionally, the District has 194 industrial users that use recycled water for soil compaction, dust control, landscape irrigation, or surface washing. In 2015, the District's recycled water users used 823 million gallons (2,526 AF) of recycled water. Refer to Attachment D, Table 1 to view a tabular summary of recycled water use by billing period by each user, and Table 2 to view a summary of recycled water usage by application use type.

All recycled water customers are required to obtain a license/permit from the District in order to use recycled water. In 2015, 32 new and retrofit sites met the site requirements and were authorized to use recycled water for landscape irrigation. To view a list of the new authorized recycled water users, refer to Table 3 in Attachment D.

Irrigation users are required to inspect their systems and correct any deficiencies. Therefore, the District requires recycled water customers to submit semi-annual self-monitoring reports. The semi-annual self-monitoring reporting

exceeds the Order's annual Self-Monitoring requirements. To view results from users' self-monitoring reports refer to Table 4 in Attachment D.

District staff performs periodic inspections of recycled water use sites to ensure compliance with the Division of Drinking Water reuse criteria and the Order. Table 5 in Attachment D provides a summary of violations found during site inspections, corrective actions taken and any change to, or revocation of a user's Recycled Water Use License. During this reporting period no Recycled Water Use Licenses or use authorization were revoked.

List of Attachments:

The following reports summarize the 2015 recycled water irrigation season activities:

- Description of recycled water treatment facilities (Attachment A).
- Dissolved Oxygen, Coliform, and Conductivity Analysis Summary (Attachment B).
- Flow and Turbidity Data (Attachment C.)
- Irrigation Site and Compliance Records for DSRSD (Attachment D).
- Irrigation Site and Compliance Records for EBMUD (Attachment E).
- Contact Information for DERWA Treatment and Distribution System (Attachment F).



ATTACHMENT A
Dublin San Ramon Services District
Description of Recycled Water Facilities

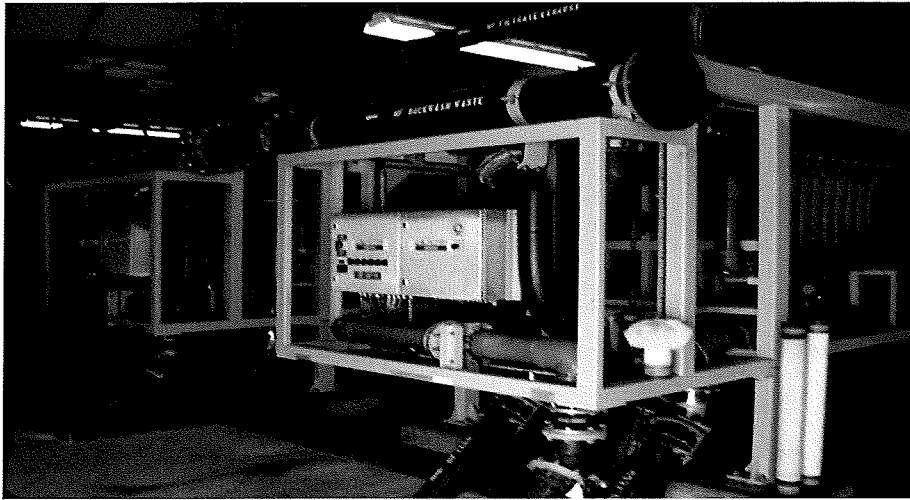
SF/UV Facility



The SF/UV treatment processes provide turbidity reduction, suspended solids removal, and inactivation of pathogens. The DSRSD SF/UV tertiary treatment plant is permitted for a capacity of 6.6 million gallons per day (mgd). The fully treated and chlorinated secondary effluent from the wastewater treatment plant flows to a diurnal storage basin. A portion of that secondary effluent is pumped to the SF/UV processes for the production of recycled water. The remaining storage basin secondary effluent is pumped to the Livermore Amador Valley Water Management (LAVWMA) facility and then to East Bay Discharge Authority (EBDA) system for discharge into San Francisco Bay through a deep water outfall. SF/UV Treatment Processes are as follows:

- Screening – Small material and plastics remaining in the fully treated secondary effluent are removed by a 3mm band screen.
- Coagulation – Coagulant chemical(s) are added to the tertiary influent and mixed into the flow using high energy mechanical mixers which causes coagulation of fine particulates in the water to begin to form small particles.
- Flocculation – Coagulated water is gently mixed in two flocculation tanks using low energy mechanical mixers to promote the agglomeration of the small particles into larger particles which can be easily filtered from the water.
- Filtration – Flocculated water flows gently up and thru an 80 inch sand bed in one of five up flow, continuous backwashed, granular sand filters for the removal of particles. A sixth sand filter is currently being constructed to meet near-term demands.
- UV Disinfection – Filtered water flows through two parallel UV channels for disinfection and inactivation of viruses and bacteria. The SF/UV system is a Xylem-Wedeco system model TAK55 M 10-6(8)/143 x 5i2(3)W. Each channel has five banks of UV bulbs. Each bank consists of 120 bulbs.

MF/UV Facility



The MF/UV treatment processes provide turbidity reduction, suspended solids removal, and inactivation of pathogens. This DSRSD MF/UV tertiary treatment plant is designed for the treatment capacity of 2.5 million gallons per day (mgd). The MF/UV treatment processes filter all particles > 0.2 microns from the secondary effluent. Unchlorinated secondary effluent is conveyed from just upstream of the wastewater plants' chlorine contact tank by MF transfer pumps to the micro-filtration influent pump wet well. The remaining final secondary effluent is pumped to the Livermore Amador Valley Water Management (LAVWMA) and East Bay Discharge Authority (EBDA) systems for discharge into San Francisco Bay through a deep water outfall. MF/UV Treatment Processes are as follows:

- Screening – A 500 micron screen removes small materials and plastics from the final secondary effluent.
- Filtration –The micro-filters filter the water removing all particles > 0.2 microns. The system consists of 5 filtration units with an instantaneous capacity of 0.75 mgd and a net capacity of 0.50 mgd. Each membrane cartridge contains 18,000 hollow fibers membranes called lumens (0.5 millimeter diameter with a nominal pore size of 0.2 micrometers). Water passes from outside the membranes through the pores and into the lumens and exits as filtrate. The system feed pressure is typically between 25 and 35 psi.
- UV Disinfection –Filtered water flows through a UV channel for disinfection and inactivation of viruses and bacteria. MF/UV system consists of ten Ondeo Degrement 40VLS UV modules. Each module has five rows of eight lamps, for a total of 40 lamps per module.

The MF/UV plant is operated when the demand of recycled water is < 2.2 mgd. If the demand is > 2.2 mgd, then the SF/UV plant is turned on to meet the demand. After treatment at either the SF/UV or MF/UV facility the filtered and disinfected water is then conveyed off-site to customers through the DERWA recycled water distribution system.

ATTACHMENT B
MONTHLY DISSOLVED OXYGEN, COLIFORM, AND CONDUCTIVITY SUMMARY

DUBLIN SAN RAMON SERVICES DISTRICT Recycled Water System

Laboratory Results

Sample Date	MF/UV			SF/UV			PS1		
	Diss. O ₂ mg/L	Total coliform MPN	Conductivity us/cm	Diss. O ₂ mg/L	Total coliform MPN	Conductivity us/cm	Diss. O ₂ mg/L	Total Coliform MPN	Conductivity us/cm
Jan.15									
1									
2									
3									
4									
5									
6									
7	6.12	< 2	1535						
8	5.25	< 2	1527						
9									
10									
11									
12									
13									
14	4.85	< 2	1438						
15	5.29	< 2	1420						
16									
17									
18									
19									
20	4.98	< 2	1417						
21	3.83	< 2	1386						
22									
23	4.41	< 2	1441						
24	3.40	< 2	1480						
25	3.05	< 2	1492						
26									
27									
28	2.68	< 2	1627						
29	2.35	< 2	1620						
30	2.24	< 2	1571						
31							8.33	< 2	1614

DUBLIN SAN RAMON SERVICES DISTRICT Recycled Water System

Laboratory Results

Sample Date	MF/UV			SF/UV			PS1		
	Diss. O ₂ mg/L	Total coliform MPN	Conductivity us/cm	Diss. O ₂ mg/L	Total coliform MPN	Conductivity us/cm	Diss. O ₂ mg/L	Total Coliform MPN	Conductivity us/cm
Mar. 15									
1									
2	2.97	< 2	1426						
3	2.30	< 2	1451						
4				8.13	< 2	1488			
5				8.40	< 2	1470			
6				8.36	< 2	1487			
7				8.41	< 2	1463			
8									
9									
10				8.39	< 2	1541			
11				8.62	< 2	1568			
12				8.26	< 2	1518			
13				8.34	< 2	1509			
14	3.34	< 2	1448						
15				8.57	< 2	1454			
16									
17				8.00	< 2	1439			
18	3.9	< 2	1386						
19				7.47	< 2	1422			
20							8.09	< 2	1472
21							8.13	< 2	1445
22				7.92	< 2	1388			
23				7.98	< 2	1365			
24				8.05	< 2	1433			
25	6.03	< 2	1347						
26				7.90	< 2	1363			
27				7.47	< 2	1393			
28	2.98	< 2	1335						
29				7.59	< 2	1398			
30				7.70	< 2	1378			
31				7.34	< 2	1392			

DUBLIN SAN RAMON SERVICES DISTRICT Recycled Water System

Laboratory Results

Sample Date	MF/UV			SF/UV			PS1		
	Diss. O ₂ mg/L	Total coliform MPN	Conductivity us/cm	Diss. O ₂ mg/L	Total coliform MPN	Conductivity us/cm	Diss. O ₂ mg/L	Total Coliform MPN	Conductivity us/cm
Apr. 15									
1				8.10	<2	1412			
2				8.05	<2	1442			
3				8.14	<2	1368			
4				7.97	<2	1383			
5				8.05	<2	1357			
6				8.06	<2	1340			
7				7.82	<2	1367			
8									
9									
10				7.84	<2	1382			
11				7.78	<2	1430			
12				7.60	<2	1424			
13				7.85	<2	1388			
14				7.75	<2	1417			
15				7.99	<2	1404			
16				8.24	4	1406			
17				7.72	<2	1436			
18				7.73	<2	1469			
19				7.66	<2	1431			
20				7.58	<2	1399			
21				7.70	<2	1477			
22				7.54	<2	1467			
23				7.39	<2	1437			
24				7.32	<2	1441			
25				7.21	<2	1450			
26				7.06	<2	1387			
27				6.96	<2	1386			
28				6.94	<2	1453			
29				6.93	<2	1475			
30				6.72	<2	1479			

DUBLIN SAN RAMON SERVICES DISTRICT Recycled Water System

Laboratory Results

Sample Date	MF/UV			SF/UV			PS1		
	Diss. O ₂ mg/L	Total coliform MPN	Conductivity us/cm	Diss. O ₂ mg/L	Total coliform MPN	Conductivity us/cm	Diss. O ₂ mg/L	Total Coliform MPN	Conductivity us/cm
May.15									
1				6.41	< 2	1478			
2				6.36	< 2	1482			
3				6.31	< 2	1477			
4				6.19	< 2	1417			
5				6.71	< 2	1514			
6				5.84	< 2	1540			
7				5.16	< 2	1510			
8				5.11	< 2	1467			
9				4.65	< 2	1438			
10				4.72	< 2	1492			
11				5.30	< 2	1470			
12				5.36	< 2	1482			
13				5.31	< 2	1515			
14				4.64	< 2	1531			
15				3.97	< 2	1461			
16				3.47	< 2	1484			
17				3.63	< 2	1491			
18				3.67	< 2	1441			
19				3.76	< 2	1529			
20				3.08	< 2	1520			
21				3.73	< 2	1520			
22				3.05	< 2	1524			
23				2.54	< 2	1518			
24				2.45	< 2	1559			
25				3.03	< 2	1556			
26				2.49	< 2	1540			
27				2.4	< 2	1565			
28				2.69	< 2	1552			
29				2.98	< 2	1599			
30				3.17	< 2	1623			
31				2.24	< 2	1612			

DUBLIN SAN RAMON SERVICES DISTRICT Recycled Water System

Laboratory Results

Sample Date	MF/UV			SF/UV			PS1		
	Diss. O ₂ mg/L	Total coliform MPN	Conductivity us/cm	Diss. O ₂ mg/L	Total coliform MPN	Conductivity us/cm	Diss. O ₂ mg/L	Total coliform MPN	Conductivity us/cm
Jun.15									
1				2.32	< 2	1611			
2				2.21	< 2	1649			
3				3.23	< 2	1672			
4				3.29	< 2	1639			
5				3.42	< 2	1649			
6				2.43	< 2	1635			
7				3.01	< 2	1594			
8				2.81	< 2	1578			
9				3.51	< 2	1655			
10				3.78	2	1692			
11				2.62	2	1684			
12				2.26	< 2	1654			
13				3.02	< 2	1702			
14				2.90	< 2	1682			
15				3.04	< 2	1659			
16				2.95	< 2	1682			
17				3.63	< 2	1745			
18				3.72	2	1679			
19				3.77	< 2	1728			
20				3.51	< 2	1714			
21				2.79	< 2	1719			
22				3.35	< 2	1668			
23				4.14	< 2	1677			
24				4.14	< 2	1723			
25				4.21	7	1732			
26				3.2	< 2	1760			
27				4.76	2	1752			
28				6.15	8	1670			
29				3.09	2	1711			
30				4.20	2	1687			

DUBLIN SAN RAMON SERVICES DISTRICT Recycled Water System

Laboratory Results

Sample Date	MF/UV			SF/UV			PS1		
	Diss. O ₂ mg/L	Total coliform MPN	Conductivity us/cm	Diss. O ₂ mg/L	Total coliform MPN	Conductivity us/cm	Diss. O ₂ mg/L	Total coliform MPN	Conductivity us/cm
Jul. 15									
1				3.83	< 2	1741			
2				3.73	< 2	1709			
3				4.99	< 2	1754			
4				4.75	< 2	1682			
5				4.25	< 2	1679			
6				4.79	< 2	1689			
7				4.72	< 2	1691			
8				5.07	< 2	1750			
9				4.89	< 2	1740			
10				4.26	4	1703			
11				3.85	< 2	1742			
12				4.84	< 2	1707			
13				4.32	< 2	1645			
14				4.55	< 2	1691			
15				4.24	< 2	1748			
16				3.40	< 2	1698			
17				3.97	< 2	1707			
18				3.84	< 2	1712			
19				3.23	< 2	1680			
20				3.85	< 2	1656			
21				3.58	< 2	1690			
22				3.63	< 2	1714			
23				2.81	< 2	1674			
24				3.03	< 2	1610			
25				3.01	< 2	1658			
26				2.21	< 2	1587			
27				3.16	< 2	1608			
28				2.85	< 2	1663			
29				2.57	< 2	1659			
30				2.56	< 2	1687			
31				2.46	< 2	1653			

DUBLIN SAN RAMON SERVICES DISTRICT Recycled Water System

Laboratory Results

Sample Date	MF/UV			SF/UV			PS1		
	Diss. O ₂ mg/L	Total coliform MPN	Conductivity us/cm	Diss. O ₂ mg/L	Total coliform MPN	Conductivity us/cm	Diss. O ₂ mg/L	Total coliform MPN	Conductivity us/cm
Aug. 15									
1				2.45	< 2	1681			
2				2.34	< 2	1638			
3				2.53	< 2	1629			
4				2.83	< 2	1644			
5				3.00	< 2	1646			
6				2.73	< 2	1632			
7				2.16	< 2	1652			
8				2.00	< 2	1704			
9				1.95	< 2	1664			
10				2.89	< 2	1636			
11				2.43	< 2	1639			
12				2.37	< 2	1686			
13				2.20	< 2	1627			
14				2.06	< 2	1613			
15				2.37	< 2	1623			
16				1.71	< 2	1597			
17				2.36	< 2	1630			
18				2.74	< 2	1603			
19				2.18	< 2	1630			
20				2.13	2	1605			
21				2.71	< 2	1661			
22				2.76	< 2	1664			
23				2.07	< 2	1622			
24				2.20	< 2	1596			
25				2.24	< 2	1616			
26				2.34	2	1640			
27				2.18	< 2	1658			
28				2.30	< 2	1597			
29				1.78	< 2	1615			
30				1.75	2	1589			
31				1.82	< 2	1583			

DUBLIN SAN RAMON SERVICES DISTRICT Recycled Water System

Laboratory Results

Sample Date	MF/UV			SF/UV			PS1		
	Diss. O ₂ mg/L	Total coliform MPN	Conductivity us/cm	Diss. O ₂ mg/L	Total coliform MPN	Conductivity us/cm	Diss. O ₂ mg/L	Total coliform MPN	Conductivity us/cm
Sept. 15									
1				2.44	< 2	1599			
2				2.46	< 2	1577			
3				2.12	30	1639			
4				2.34	4	1597			
5				2.44	6	1616			
6				2.05	< 2	1639			
7				2.07	< 2	1602			
8				2.55	8	1547			
9				3.22	2	1604			
10				2.75	< 2	1607			
11				2.92	< 2	1575			
12				2.02	2	1605			
13				1.88	2	1565			
14				1.82	2	1522			
15				2.16	4	1561			
16				5.95	< 2	1556			
17				4.89	< 2	1624			
18				4.90	< 2	1535			
19				4.39	< 2	1597			
20				3.65	< 2	1560			
21				3.77	< 2	1573			
22				3.59	< 2	1545			
23				3.39	< 2	1488			
24				3.47	< 2	1522			
25				3.08	2	1498			
26				2.98	< 2	1523			
27				2.73	< 2	1505			
28				3.19	< 2	1478			
29				2.43	< 2	1540			
30				2.26	< 2	1523			

DUBLIN SAN RAMON SERVICES DISTRICT Recycled Water System

Laboratory Results

Sample Date	MF/UV			SF/UV			PS1		
	Diss. O ₂ mg/L	Total coliform MPN	Conductivity us/cm	Diss. O ₂ mg/L	Total coliform MPN	Conductivity us/cm	Diss. O ₂ mg/L	Total coliform MPN	Conductivity us/cm
Oct. 15									
1				1.94	< 2	1546			
2				1.90	< 2	1506			
3				2.19	< 2	1507			
4				2.38	< 2	1498			
5				2.57	< 2	1469			
6				2.24	< 2	1493			
7				2.20	< 2	1497			
8				1.97	< 2	1523			
9				1.99	< 2	1505			
10				1.85	< 2	1527			
11				1.84	< 2	1479			
12				1.68	< 2	1474			
13				2.17	< 2	1505			
14				2.43	< 2	1537			
15				1.96	23	1537			
16				2.16	< 2	1518			
17				1.92	8	1526			
18				1.76	< 2	1496			
19				1.83	< 2	1484			
20				2.34	8	1495			
21							7.24	< 2	1490
22	3.52	< 2	1447						
23	5.40	< 2	1320						
24				4.68	< 2	1566			
25				1.91	< 2	1538			
26				2.32	< 2	1490			
27				3.51	< 2	1526			
28				2.76	< 2	1523			
29				2.81	2	1507			
30				2.97	< 2	1515			
31				2.30	< 2	1539			

DUBLIN SAN RAMON SERVICES DISTRICT

Recycled Water System

Laboratory Results

Sample Date	MF/UV			SF/UV			PS1		
	Diss. O ₂ mg/L	Total coliform MPN	Conductivity us/cm	Diss. O ₂ mg/L	Total coliform MPN	Conductivity us/cm	Diss. O ₂ mg/L	Total Coliform MPN	Conductivity us/cm
1									
2	4.79	< 2	1566						
3	4.92	< 2	1476						
4									
5									
6									
7									
8	1.74	< 2	1575						
9									
10									
11									
12									
13									
14	2.19	< 2	1600						
15	6.63	< 2	1504						
16									
17									
18	1.41	< 2	1607						
19									
20									
21	1.25	< 2	1569						
22									
23									
24									
25									
26									
27	6.91	< 2	1566						
28									
29									
30									
31	5.63	< 2	1551						

ATTACHMENT C
FLOW AND TURBIDITY DATA

**Micro-Filtration
Ultraviolet Disinfection Facility**

DUBLIN SAN RAMON SERVICES DISTRICT

Recycled Water System

Operating Data - Daily Averages

Date	Recycled Water Produced (MG)	Filtrate Turbidity (Average NTU)	UV Transmittance of Recycled Water Produced (Average %)	UV Dosage (Average mW/cm ²)
January 1, 2015	OFFLINE	OFFLINE	OFFLINE	OFFLINE
January 2, 2015	OFFLINE	OFFLINE	OFFLINE	OFFLINE
January 3, 2015	OFFLINE	OFFLINE	OFFLINE	OFFLINE
January 4, 2015	OFFLINE	OFFLINE	OFFLINE	OFFLINE
January 5, 2015	OFFLINE	OFFLINE	OFFLINE	OFFLINE
January 6, 2015	OFFLINE	OFFLINE	OFFLINE	OFFLINE
January 7, 2015	0.63	0.14	84.0	386
January 8, 2015	1.64	0.14	84.4	399
January 9, 2015	0.47	0.15	83.4	451
January 10, 2015	OFFLINE	OFFLINE	OFFLINE	OFFLINE
January 11, 2015	OFFLINE	OFFLINE	OFFLINE	OFFLINE
January 12, 2015	OFFLINE	OFFLINE	OFFLINE	OFFLINE
January 13, 2015	OFFLINE	OFFLINE	OFFLINE	OFFLINE
January 14, 2015	1.10	0.07	85.0	370
January 15, 2015	1.25	0.08	85.0	392
January 16, 2015	0.31	0.08	84.7	402
January 17, 2015	OFFLINE	OFFLINE	OFFLINE	OFFLINE
January 18, 2015	OFFLINE	OFFLINE	OFFLINE	OFFLINE
January 19, 2015	OFFLINE	OFFLINE	OFFLINE	OFFLINE
January 20, 2015	0.76	0.09	85.3	434
January 21, 2015	1.50	0.08	78.8	420
January 22, 2015	0.55	0.10	71.9	402
January 23, 2015	0.93	0.09	76.4	427
January 24, 2015	1.48	0.10	76.8	420
January 25, 2015	1.33	0.12	77.2	449
January 26, 2015	0.42	0.14	76.8	456
January 27, 2015	OFFLINE	OFFLINE	OFFLINE	OFFLINE
January 28, 2015	0.69	0.10	76.0	439
January 29, 2015	1.43	0.10	75.9	427
January 30, 2015	1.25	0.13	77.5	452
January 31, 2015	1.08	0.13	78.1	455

Monthly Totals	MG	NTU	Percent	mW/cm ²
MAX	1.64	0.15	85.3	456
MIN	0.31	0.07	71.9	370
AVG	0.99	0.11	79.8	422
Total	16.83			

Permit Values

Max = 0.2

Min = 65

Min = 80

DUBLIN SAN RAMON SERVICES DISTRICT
Recycled Water System

Operating Data - Daily Averages

Date	Recycled Water Produced (MG)	Filtrate Turbidity (Average NTU)	UV Transmittance of Recycled Water Produced (Average %)	UV Dosage (Average mW/cm2)
February 1, 2015	0.69	0.13	79.2	450
February 2, 2015	OFFLINE	OFFLINE	OFFLINE	OFFLINE
February 3, 2015	OFFLINE	OFFLINE	OFFLINE	OFFLINE
February 4, 2015	OFFLINE	OFFLINE	OFFLINE	OFFLINE
February 5, 2015	OFFLINE	OFFLINE	OFFLINE	OFFLINE
February 6, 2015	OFFLINE	OFFLINE	OFFLINE	OFFLINE
February 7, 2015	OFFLINE	OFFLINE	OFFLINE	OFFLINE
February 8, 2015	OFFLINE	OFFLINE	OFFLINE	OFFLINE
February 9, 2015	OFFLINE	OFFLINE	OFFLINE	OFFLINE
February 10, 2015	0.99	0.15	69.0	333
February 11, 2015	1.28	0.15	73.1	401
February 12, 2015	0.43	0.09	74.3	457
February 13, 2015	OFFLINE	OFFLINE	OFFLINE	OFFLINE
February 14, 2015	OFFLINE	OFFLINE	OFFLINE	OFFLINE
February 15, 2015	OFFLINE	OFFLINE	OFFLINE	OFFLINE
February 16, 2015	OFFLINE	OFFLINE	OFFLINE	OFFLINE
February 17, 2015	1.21	0.13	77.1	399
February 18, 2015	1.84	0.13	77.2	399
February 19, 2015	1.59	0.14	76.8	415
February 20, 2015	1.00	0.14	75.6	432
February 21, 2015	0.27	0.15	75.6	416
February 22, 2015	OFFLINE	OFFLINE	OFFLINE	OFFLINE
February 23, 2015	0.74	0.16	76.3	469
February 24, 2015	1.42	0.13	77.9	443
February 25, 2015	1.53	0.13	77.8	421
February 26, 2015	1.52	0.13	76.3	420
February 27, 2015	1.52	0.13	76.8	422
February 28, 2015	0.55	0.14	76.6	429

Monthly Totals	MG	NTU	Percent	mW/cm2
MAX	1.84	0.16	79.2	469
MIN	0.27	0.09	69.0	333
AVG	1.11	0.14	76.0	420
Total	16.58			

Permit Values

Max = 0.2

Min = 65

Min = 80

DUBLIN SAN RAMON SERVICES DISTRICT
Recycled Water System

Operating Data - Daily Averages

Date	Recycled Water Produced (MG)	Filtrate Turbidity (Average NTU)	UV Transmittance of Recycled Water Produced (Average %)	UV Dosage (Average mW/cm2)
March 1, 2015	OFFLINE	OFFLINE	OFFLINE	OFFLINE
March 2, 2015	0.67	0.16	76.6	443
March 3, 2015	1.06	0.14	76.6	432
March 4, 2015	OFFLINE	OFFLINE	OFFLINE	OFFLINE
March 5, 2015	OFFLINE	OFFLINE	OFFLINE	OFFLINE
March 6, 2015	OFFLINE	OFFLINE	OFFLINE	OFFLINE
March 7, 2015	OFFLINE	OFFLINE	OFFLINE	OFFLINE
March 8, 2015	OFFLINE	OFFLINE	OFFLINE	OFFLINE
March 9, 2015	OFFLINE	OFFLINE	OFFLINE	OFFLINE
March 10, 2015	OFFLINE	OFFLINE	OFFLINE	OFFLINE
March 11, 2015	0.62	0.13	77.3	420
March 12, 2015	OFFLINE	OFFLINE	OFFLINE	OFFLINE
March 13, 2015	0.16	0.15	76.0	353
March 14, 2015	1.05	0.15	77.2	367
March 15, 2015	0.28	0.14	74.0	413
March 16, 2015	0.73	0.13	74.9	447
March 17, 2015	OFFLINE	OFFLINE	OFFLINE	OFFLINE
March 18, 2015	0.84	0.13	75.6	464
March 19, 2015	1.28	0.12	75.2	481
March 20, 2015	1.13	0.13	75.2	494
March 21, 2015	0.80	0.15	75.4	443
March 22, 2015	OFFLINE	OFFLINE	OFFLINE	OFFLINE
March 23, 2015	0.29	0.12	74.2	417
March 24, 2015	1.04	0.10	74.8	441
March 25, 2015	1.12	0.09	75.6	460
March 26, 2015	OFFLINE	OFFLINE	OFFLINE	OFFLINE
March 27, 2015	0.01	0.11	75.0	465
March 28, 2015	0.48	0.11	75.4	465
March 29, 2015	OFFLINE	OFFLINE	OFFLINE	OFFLINE
March 30, 2015	OFFLINE	OFFLINE	OFFLINE	OFFLINE
March 31, 2015	OFFLINE	OFFLINE	OFFLINE	OFFLINE

Monthly Totals	MG	NTU	Percent	mW/cm2
MAX	1.28	0.16	77.3	494
MIN	0.01	0.09	74.0	353
AVG	0.72	0.13	75.6	438
Total	11.56			

Permit Values

Max = 0.2

Min = 65

Min = 80

DUBLIN SAN RAMON SERVICES DISTRICT
Recycled Water System

Operating Data - Daily Averages

Date	Recycled Water Produced (MG)	Filtrate Turbidity (Average NTU)	UV Transmittance of Recycled Water Produced (Average %)	UV Dosage (Average mW/cm2)
April 1, 2015	OFFLINE	OFFLINE	OFFLINE	OFFLINE
April 2, 2015	OFFLINE	OFFLINE	OFFLINE	OFFLINE
April 3, 2015	OFFLINE	OFFLINE	OFFLINE	OFFLINE
April 4, 2015	OFFLINE	OFFLINE	OFFLINE	OFFLINE
April 5, 2015	OFFLINE	OFFLINE	OFFLINE	OFFLINE
April 6, 2015	OFFLINE	OFFLINE	OFFLINE	OFFLINE
April 7, 2015	OFFLINE	OFFLINE	OFFLINE	OFFLINE
April 8, 2015	OFFLINE	OFFLINE	OFFLINE	OFFLINE
April 9, 2015	OFFLINE	OFFLINE	OFFLINE	OFFLINE
April 10, 2015	OFFLINE	OFFLINE	OFFLINE	OFFLINE
April 11, 2015	OFFLINE	OFFLINE	OFFLINE	OFFLINE
April 12, 2015	OFFLINE	OFFLINE	OFFLINE	OFFLINE
April 13, 2015	OFFLINE	OFFLINE	OFFLINE	OFFLINE
April 14, 2015	OFFLINE	OFFLINE	OFFLINE	OFFLINE
April 15, 2015	OFFLINE	OFFLINE	OFFLINE	OFFLINE
April 16, 2015	OFFLINE	OFFLINE	OFFLINE	OFFLINE
April 17, 2015	OFFLINE	OFFLINE	OFFLINE	OFFLINE
April 18, 2015	OFFLINE	OFFLINE	OFFLINE	OFFLINE
April 19, 2015	OFFLINE	OFFLINE	OFFLINE	OFFLINE
April 20, 2015	OFFLINE	OFFLINE	OFFLINE	OFFLINE
April 21, 2015	OFFLINE	OFFLINE	OFFLINE	OFFLINE
April 22, 2015	OFFLINE	OFFLINE	OFFLINE	OFFLINE
April 23, 2015	OFFLINE	OFFLINE	OFFLINE	OFFLINE
April 24, 2015	OFFLINE	OFFLINE	OFFLINE	OFFLINE
April 25, 2015	OFFLINE	OFFLINE	OFFLINE	OFFLINE
April 26, 2015	OFFLINE	OFFLINE	OFFLINE	OFFLINE
April 27, 2015	OFFLINE	OFFLINE	OFFLINE	OFFLINE
April 28, 2015	OFFLINE	OFFLINE	OFFLINE	OFFLINE
April 29, 2015	OFFLINE	OFFLINE	OFFLINE	OFFLINE
April 30, 2015	OFFLINE	OFFLINE	OFFLINE	OFFLINE
-	-	-	-	-

Monthly Totals	MG	NTU	Percent	mW/cm2
MAX	OFFLINE	OFFLINE	OFFLINE	OFFLINE
MIN	OFFLINE	OFFLINE	OFFLINE	OFFLINE
AVG	OFFLINE	OFFLINE	OFFLINE	OFFLINE
Total	OFFLINE			

Permit Values

Max = 0.2

Min = 65

Min = 80

DUBLIN SAN RAMON SERVICES DISTRICT
Recycled Water System

Operating Data - Daily Averages

Date	Recycled Water Produced (MG)	Filtrate Turbidity (Average NTU)	UV Transmittance of Recycled Water Produced (Average %)	UV Dosage (Average mW/cm2)
May 1, 2015	OFFLINE	OFFLINE	OFFLINE	OFFLINE
May 2, 2015	OFFLINE	OFFLINE	OFFLINE	OFFLINE
May 3, 2015	OFFLINE	OFFLINE	OFFLINE	OFFLINE
May 4, 2015	OFFLINE	OFFLINE	OFFLINE	OFFLINE
May 5, 2015	OFFLINE	OFFLINE	OFFLINE	OFFLINE
May 6, 2015	OFFLINE	OFFLINE	OFFLINE	OFFLINE
May 7, 2015	OFFLINE	OFFLINE	OFFLINE	OFFLINE
May 8, 2015	OFFLINE	OFFLINE	OFFLINE	OFFLINE
May 9, 2015	OFFLINE	OFFLINE	OFFLINE	OFFLINE
May 10, 2015	OFFLINE	OFFLINE	OFFLINE	OFFLINE
May 11, 2015	OFFLINE	OFFLINE	OFFLINE	OFFLINE
May 12, 2015	OFFLINE	OFFLINE	OFFLINE	OFFLINE
May 13, 2015	OFFLINE	OFFLINE	OFFLINE	OFFLINE
May 14, 2015	OFFLINE	OFFLINE	OFFLINE	OFFLINE
May 15, 2015	OFFLINE	OFFLINE	OFFLINE	OFFLINE
May 16, 2015	OFFLINE	OFFLINE	OFFLINE	OFFLINE
May 17, 2015	OFFLINE	OFFLINE	OFFLINE	OFFLINE
May 18, 2015	OFFLINE	OFFLINE	OFFLINE	OFFLINE
May 19, 2015	OFFLINE	OFFLINE	OFFLINE	OFFLINE
May 20, 2015	OFFLINE	OFFLINE	OFFLINE	OFFLINE
May 21, 2015	OFFLINE	OFFLINE	OFFLINE	OFFLINE
May 22, 2015	OFFLINE	OFFLINE	OFFLINE	OFFLINE
May 23, 2015	OFFLINE	OFFLINE	OFFLINE	OFFLINE
May 24, 2015	OFFLINE	OFFLINE	OFFLINE	OFFLINE
May 25, 2015	OFFLINE	OFFLINE	OFFLINE	OFFLINE
May 26, 2015	OFFLINE	OFFLINE	OFFLINE	OFFLINE
May 27, 2015	OFFLINE	OFFLINE	OFFLINE	OFFLINE
May 28, 2015	OFFLINE	OFFLINE	OFFLINE	OFFLINE
May 29, 2015	OFFLINE	OFFLINE	OFFLINE	OFFLINE
May 30, 2015	OFFLINE	OFFLINE	OFFLINE	OFFLINE
May 31, 2015	OFFLINE	OFFLINE	OFFLINE	OFFLINE

Monthly Totals	MG	NTU	Percent	mW/cm2
MAX	OFFLINE	OFFLINE	OFFLINE	OFFLINE
MIN	OFFLINE	OFFLINE	OFFLINE	OFFLINE
AVG	OFFLINE	OFFLINE	OFFLINE	OFFLINE
Total	OFFLINE			

Permit Values: Max = 0.2 Min = 65 Min = 80

DUBLIN SAN RAMON SERVICES DISTRICT
Recycled Water System

Operating Data - Daily Averages

Date	Recycled Water Produced (MG)	Filtrate Turbidity (Average NTU)	UV Transmittance of Recycled Water Produced (Average %)	UV Dosage (Average mW/cm2)
June 1, 2015	OFFLINE	OFFLINE	OFFLINE	OFFLINE
June 2, 2015	OFFLINE	OFFLINE	OFFLINE	OFFLINE
June 3, 2015	OFFLINE	OFFLINE	OFFLINE	OFFLINE
June 4, 2015	OFFLINE	OFFLINE	OFFLINE	OFFLINE
June 5, 2015	OFFLINE	OFFLINE	OFFLINE	OFFLINE
June 6, 2015	OFFLINE	OFFLINE	OFFLINE	OFFLINE
June 7, 2015	OFFLINE	OFFLINE	OFFLINE	OFFLINE
June 8, 2015	OFFLINE	OFFLINE	OFFLINE	OFFLINE
June 9, 2015	OFFLINE	OFFLINE	OFFLINE	OFFLINE
June 10, 2015	OFFLINE	OFFLINE	OFFLINE	OFFLINE
June 11, 2015	OFFLINE	OFFLINE	OFFLINE	OFFLINE
June 12, 2015	OFFLINE	OFFLINE	OFFLINE	OFFLINE
June 13, 2015	OFFLINE	OFFLINE	OFFLINE	OFFLINE
June 14, 2015	OFFLINE	OFFLINE	OFFLINE	OFFLINE
June 15, 2015	OFFLINE	OFFLINE	OFFLINE	OFFLINE
June 16, 2015	OFFLINE	OFFLINE	OFFLINE	OFFLINE
June 17, 2015	OFFLINE	OFFLINE	OFFLINE	OFFLINE
June 18, 2015	OFFLINE	OFFLINE	OFFLINE	OFFLINE
June 19, 2015	OFFLINE	OFFLINE	OFFLINE	OFFLINE
June 20, 2015	OFFLINE	OFFLINE	OFFLINE	OFFLINE
June 21, 2015	OFFLINE	OFFLINE	OFFLINE	OFFLINE
June 22, 2015	OFFLINE	OFFLINE	OFFLINE	OFFLINE
June 23, 2015	OFFLINE	OFFLINE	OFFLINE	OFFLINE
June 24, 2015	OFFLINE	OFFLINE	OFFLINE	OFFLINE
June 25, 2015	OFFLINE	OFFLINE	OFFLINE	OFFLINE
June 26, 2015	OFFLINE	OFFLINE	OFFLINE	OFFLINE
June 27, 2015	OFFLINE	OFFLINE	OFFLINE	OFFLINE
June 28, 2015	1.60	0.10	74.1	360
June 29, 2015	0.70	0.10	73.1	379
June 30, 2015	OFFLINE	OFFLINE	OFFLINE	OFFLINE
-	-	-	-	-

Monthly Totals	MG	NTU	Percent	mW/cm2
MAX	1.60	0.10	74.1	379
MIN	0.70	0.10	73.1	360
AVG	1.15	0.10	73.6	370
Total	2.29			

Permit Values

Max = 0.2

Min = 65

Min = 80

DUBLIN SAN RAMON SERVICES DISTRICT
Recycled Water System

Operating Data - Daily Averages

Date	Recycled Water Produced (MG)	Filtrate Turbidity (Average NTU)	UV Transmittance of Recycled Water Produced (Average %)	UV Dosage (Average mW/cm2)
July 1, 2015	OFFLINE	OFFLINE	OFFLINE	OFFLINE
July 2, 2015	OFFLINE	OFFLINE	OFFLINE	OFFLINE
July 3, 2015	OFFLINE	OFFLINE	OFFLINE	OFFLINE
July 4, 2015	OFFLINE	OFFLINE	OFFLINE	OFFLINE
July 5, 2015	OFFLINE	OFFLINE	OFFLINE	OFFLINE
July 6, 2015	OFFLINE	OFFLINE	OFFLINE	OFFLINE
July 7, 2015	OFFLINE	OFFLINE	OFFLINE	OFFLINE
July 8, 2015	OFFLINE	OFFLINE	OFFLINE	OFFLINE
July 9, 2015	OFFLINE	OFFLINE	OFFLINE	OFFLINE
July 10, 2015	OFFLINE	OFFLINE	OFFLINE	OFFLINE
July 11, 2015	OFFLINE	OFFLINE	OFFLINE	OFFLINE
July 12, 2015	OFFLINE	OFFLINE	OFFLINE	OFFLINE
July 13, 2015	OFFLINE	OFFLINE	OFFLINE	OFFLINE
July 14, 2015	OFFLINE	OFFLINE	OFFLINE	OFFLINE
July 15, 2015	OFFLINE	OFFLINE	OFFLINE	OFFLINE
July 16, 2015	OFFLINE	OFFLINE	OFFLINE	OFFLINE
July 17, 2015	OFFLINE	OFFLINE	OFFLINE	OFFLINE
July 18, 2015	OFFLINE	OFFLINE	OFFLINE	OFFLINE
July 19, 2015	OFFLINE	OFFLINE	OFFLINE	OFFLINE
July 20, 2015	OFFLINE	OFFLINE	OFFLINE	OFFLINE
July 21, 2015	OFFLINE	OFFLINE	OFFLINE	OFFLINE
July 22, 2015	OFFLINE	OFFLINE	OFFLINE	OFFLINE
July 23, 2015	OFFLINE	OFFLINE	OFFLINE	OFFLINE
July 24, 2015	OFFLINE	OFFLINE	OFFLINE	OFFLINE
July 25, 2015	OFFLINE	OFFLINE	OFFLINE	OFFLINE
July 26, 2015	OFFLINE	OFFLINE	OFFLINE	OFFLINE
July 27, 2015	OFFLINE	OFFLINE	OFFLINE	OFFLINE
July 28, 2015	OFFLINE	OFFLINE	OFFLINE	OFFLINE
July 29, 2015	OFFLINE	OFFLINE	OFFLINE	OFFLINE
July 30, 2015	OFFLINE	OFFLINE	OFFLINE	OFFLINE
July 31, 2015	OFFLINE	OFFLINE	OFFLINE	OFFLINE

Monthly Totals	MG	NTU	Percent	mW/cm2
MAX	OFFLINE	OFFLINE	OFFLINE	OFFLINE
MIN	OFFLINE	OFFLINE	OFFLINE	OFFLINE
AVG	OFFLINE	OFFLINE	OFFLINE	OFFLINE
Total	OFFLINE			

Permit Values

Max = 0.2

Min = 65

Min = 80

DUBLIN SAN RAMON SERVICES DISTRICT
Recycled Water System

Operating Data - Daily Averages

Date	Recycled Water Produced (MG)	Filtrate Turbidity (Average NTU)	UV Transmittance of Recycled Water Produced (Average %)	UV Dosage (Average mW/cm2)
August 1, 2015	OFFLINE	OFFLINE	OFFLINE	OFFLINE
August 2, 2015	OFFLINE	OFFLINE	OFFLINE	OFFLINE
August 3, 2015	OFFLINE	OFFLINE	OFFLINE	OFFLINE
August 4, 2015	OFFLINE	OFFLINE	OFFLINE	OFFLINE
August 5, 2015	OFFLINE	OFFLINE	OFFLINE	OFFLINE
August 6, 2015	OFFLINE	OFFLINE	OFFLINE	OFFLINE
August 7, 2015	OFFLINE	OFFLINE	OFFLINE	OFFLINE
August 8, 2015	OFFLINE	OFFLINE	OFFLINE	OFFLINE
August 9, 2015	OFFLINE	OFFLINE	OFFLINE	OFFLINE
August 10, 2015	OFFLINE	OFFLINE	OFFLINE	OFFLINE
August 11, 2015	OFFLINE	OFFLINE	OFFLINE	OFFLINE
August 12, 2015	OFFLINE	OFFLINE	OFFLINE	OFFLINE
August 13, 2015	OFFLINE	OFFLINE	OFFLINE	OFFLINE
August 14, 2015	OFFLINE	OFFLINE	OFFLINE	OFFLINE
August 15, 2015	OFFLINE	OFFLINE	OFFLINE	OFFLINE
August 16, 2015	OFFLINE	OFFLINE	OFFLINE	OFFLINE
August 17, 2015	OFFLINE	OFFLINE	OFFLINE	OFFLINE
August 18, 2015	OFFLINE	OFFLINE	OFFLINE	OFFLINE
August 19, 2015	OFFLINE	OFFLINE	OFFLINE	OFFLINE
August 20, 2015	OFFLINE	OFFLINE	OFFLINE	OFFLINE
August 21, 2015	OFFLINE	OFFLINE	OFFLINE	OFFLINE
August 22, 2015	OFFLINE	OFFLINE	OFFLINE	OFFLINE
August 23, 2015	OFFLINE	OFFLINE	OFFLINE	OFFLINE
August 24, 2015	OFFLINE	OFFLINE	OFFLINE	OFFLINE
August 25, 2015	OFFLINE	OFFLINE	OFFLINE	OFFLINE
August 26, 2015	OFFLINE	OFFLINE	OFFLINE	OFFLINE
August 27, 2015	OFFLINE	OFFLINE	OFFLINE	OFFLINE
August 28, 2015	OFFLINE	OFFLINE	OFFLINE	OFFLINE
August 29, 2015	OFFLINE	OFFLINE	OFFLINE	OFFLINE
August 30, 2015	OFFLINE	OFFLINE	OFFLINE	OFFLINE
August 31, 2015	OFFLINE	OFFLINE	OFFLINE	OFFLINE

Monthly Totals	MG	NTU	Percent	mW/cm2
MAX	OFFLINE	OFFLINE	OFFLINE	OFFLINE
MIN	OFFLINE	OFFLINE	OFFLINE	OFFLINE
AVG	OFFLINE	OFFLINE	OFFLINE	OFFLINE
Total	OFFLINE			

Permit Values

Max = 0.2

Min = 65

Min = 80

DUBLIN SAN RAMON SERVICES DISTRICT
Recycled Water System

Operating Data - Daily Averages

Date	Recycled Water Produced (MG)	Filtrate Turbidity (Average NTU)	UV Transmittance of Recycled Water Produced (Average %)	UV Dosage (Average mW/cm2)
September 1, 2015	OFFLINE	OFFLINE	OFFLINE	OFFLINE
September 2, 2015	OFFLINE	OFFLINE	OFFLINE	OFFLINE
September 3, 2015	OFFLINE	OFFLINE	OFFLINE	OFFLINE
September 4, 2015	OFFLINE	OFFLINE	OFFLINE	OFFLINE
September 5, 2015	OFFLINE	OFFLINE	OFFLINE	OFFLINE
September 6, 2015	OFFLINE	OFFLINE	OFFLINE	OFFLINE
September 7, 2015	OFFLINE	OFFLINE	OFFLINE	OFFLINE
September 8, 2015	OFFLINE	OFFLINE	OFFLINE	OFFLINE
September 9, 2015	OFFLINE	OFFLINE	OFFLINE	OFFLINE
September 10, 2015	OFFLINE	OFFLINE	OFFLINE	OFFLINE
September 11, 2015	OFFLINE	OFFLINE	OFFLINE	OFFLINE
September 12, 2015	OFFLINE	OFFLINE	OFFLINE	OFFLINE
September 13, 2015	OFFLINE	OFFLINE	OFFLINE	OFFLINE
September 14, 2015	OFFLINE	OFFLINE	OFFLINE	OFFLINE
September 15, 2015	OFFLINE	OFFLINE	OFFLINE	OFFLINE
September 16, 2015	OFFLINE	OFFLINE	OFFLINE	OFFLINE
September 17, 2015	OFFLINE	OFFLINE	OFFLINE	OFFLINE
September 18, 2015	OFFLINE	OFFLINE	OFFLINE	OFFLINE
September 19, 2015	OFFLINE	OFFLINE	OFFLINE	OFFLINE
September 20, 2015	OFFLINE	OFFLINE	OFFLINE	OFFLINE
September 21, 2015	OFFLINE	OFFLINE	OFFLINE	OFFLINE
September 22, 2015	OFFLINE	OFFLINE	OFFLINE	OFFLINE
September 23, 2015	OFFLINE	OFFLINE	OFFLINE	OFFLINE
September 24, 2015	OFFLINE	OFFLINE	OFFLINE	OFFLINE
September 25, 2015	OFFLINE	OFFLINE	OFFLINE	OFFLINE
September 26, 2015	OFFLINE	OFFLINE	OFFLINE	OFFLINE
September 27, 2015	OFFLINE	OFFLINE	OFFLINE	OFFLINE
September 28, 2015	OFFLINE	OFFLINE	OFFLINE	OFFLINE
September 29, 2015	OFFLINE	OFFLINE	OFFLINE	OFFLINE
September 30, 2015	OFFLINE	OFFLINE	OFFLINE	OFFLINE
-	-	-	-	-

Monthly Totals	MG	NTU	Percent	mW/cm2
MAX	OFFLINE	OFFLINE	OFFLINE	OFFLINE
MIN	OFFLINE	OFFLINE	OFFLINE	OFFLINE
AVG	OFFLINE	OFFLINE	OFFLINE	OFFLINE
Total	OFFLINE			

Permit Values

Max = 0.2

Min = 65

Min = 80

DUBLIN SAN RAMON SERVICES DISTRICT
Recycled Water System

Operating Data - Daily Averages

Date	Recycled Water Produced (MG)	Filtrate Turbidity (Average NTU)	UV Transmittance of Recycled Water Produced (Average %)	UV Dosage (Average mW/cm2)
October 1, 2015	OFFLINE	OFFLINE	OFFLINE	OFFLINE
October 2, 2015	OFFLINE	OFFLINE	OFFLINE	OFFLINE
October 3, 2015	OFFLINE	OFFLINE	OFFLINE	OFFLINE
October 4, 2015	OFFLINE	OFFLINE	OFFLINE	OFFLINE
October 5, 2015	OFFLINE	OFFLINE	OFFLINE	OFFLINE
October 6, 2015	OFFLINE	OFFLINE	OFFLINE	OFFLINE
October 7, 2015	OFFLINE	OFFLINE	OFFLINE	OFFLINE
October 8, 2015	OFFLINE	OFFLINE	OFFLINE	OFFLINE
October 9, 2015	OFFLINE	OFFLINE	OFFLINE	OFFLINE
October 10, 2015	OFFLINE	OFFLINE	OFFLINE	OFFLINE
October 11, 2015	OFFLINE	OFFLINE	OFFLINE	OFFLINE
October 12, 2015	OFFLINE	OFFLINE	OFFLINE	OFFLINE
October 13, 2015	OFFLINE	OFFLINE	OFFLINE	OFFLINE
October 14, 2015	OFFLINE	OFFLINE	OFFLINE	OFFLINE
October 15, 2015	OFFLINE	OFFLINE	OFFLINE	OFFLINE
October 16, 2015	OFFLINE	OFFLINE	OFFLINE	OFFLINE
October 17, 2015	OFFLINE	OFFLINE	OFFLINE	OFFLINE
October 18, 2015	OFFLINE	OFFLINE	OFFLINE	OFFLINE
October 19, 2015	OFFLINE	OFFLINE	OFFLINE	OFFLINE
October 20, 2015	0.01	0.12	71.0	387
October 21, 2015	0.70	0.10	71.8	399
October 22, 2015	1.04	0.09	72.3	353
October 23, 2015	1.17	0.10	71.6	356
October 24, 2015	OFFLINE	OFFLINE	OFFLINE	OFFLINE
October 25, 2015	OFFLINE	OFFLINE	OFFLINE	OFFLINE
October 26, 2015	OFFLINE	OFFLINE	OFFLINE	OFFLINE
October 27, 2015	OFFLINE	OFFLINE	OFFLINE	OFFLINE
October 28, 2015	OFFLINE	OFFLINE	OFFLINE	OFFLINE
October 29, 2015	OFFLINE	OFFLINE	OFFLINE	OFFLINE
October 30, 2015	OFFLINE	OFFLINE	OFFLINE	OFFLINE
October 31, 2015	OFFLINE	OFFLINE	OFFLINE	OFFLINE

Monthly Totals	MG	NTU	Percent	mW/cm2
MAX	1.17	0.12	72.3	399
MIN	0.01	0.09	71.0	353
AVG	0.73	0.10	71.7	374
Total	2.91			

Permit Values

Max = 0.2

Min = 65

Min = 80

DUBLIN SAN RAMON SERVICES DISTRICT
Recycled Water System

Operating Data - Daily Averages

Date	Recycled Water Produced (MG)	Filtrate Turbidity (Average NTU)	UV Transmittance of Recycled Water Produced (Average %)	UV Dosage (Average mW/cm ²)
November 1, 2015	OFFLINE	OFFLINE	OFFLINE	OFFLINE
November 1, 2015	OFFLINE	OFFLINE	OFFLINE	OFFLINE
November 3, 2015	OFFLINE	OFFLINE	OFFLINE	OFFLINE
November 4, 2015	OFFLINE	OFFLINE	OFFLINE	OFFLINE
November 5, 2015	OFFLINE	OFFLINE	OFFLINE	OFFLINE
November 6, 2015	OFFLINE	OFFLINE	OFFLINE	OFFLINE
November 7, 2015	OFFLINE	OFFLINE	OFFLINE	OFFLINE
November 8, 2015	OFFLINE	OFFLINE	OFFLINE	OFFLINE
November 9, 2015	OFFLINE	OFFLINE	OFFLINE	OFFLINE
November 10, 2015	OFFLINE	OFFLINE	OFFLINE	OFFLINE
November 11, 2015	OFFLINE	OFFLINE	OFFLINE	OFFLINE
November 12, 2015	0.75	0.10	71.0	407
November 13, 2015	0.52	0.10	69.2	384
November 14, 2015	OFFLINE	OFFLINE	OFFLINE	OFFLINE
November 15, 2015	0.74	0.10	67.6	381
November 16, 2015	1.22	0.10	67.9	374
November 17, 2015	1.15	0.11	67.8	392
November 18, 2015	0.43	0.11	67.0	376
November 19, 2015	OFFLINE	OFFLINE	OFFLINE	OFFLINE
November 20, 2015	0.97	0.13	75.4	414
November 21, 2015	0.76	0.14	73.0	378
November 22, 2015	OFFLINE	OFFLINE	OFFLINE	OFFLINE
November 23, 2015	0.71	0.15	68.2	359
November 24, 2015	0.49	0.16	67.2	353
November 25, 2015	0.48	0.09	69.3	426
November 26, 2015	0.57	0.08	70.2	428
November 27, 2015	0.35	0.07	71.9	438
November 28, 2015	OFFLINE	OFFLINE	OFFLINE	OFFLINE
November 29, 2015	OFFLINE	OFFLINE	OFFLINE	OFFLINE
November 30, 2015	OFFLINE	OFFLINE	OFFLINE	OFFLINE
-	-	-	-	-

Monthly Totals	MG	NTU	Percent	mW/cm ²
MAX	1.22	0.16	75.4	438
MIN	0.35	0.07	67.0	353
AVG	0.70	0.11	69.7	393
Total	9.13			

Permit Values Max = 0.2 Min = 65 Min = 80

**Sand Filtration
Ultraviolet Disinfection Facility**

	TIPS Influent Flow Total (Mgal)	SF/UV Recycled Water Flow Total (Mgal)	SF/UV Average Product Turbidity (NTU)	SF/UV -% of time Product Turbidity>5	SF/UV Average UVT (%)	SF/UV Average UV Dosage (mJ/cm2)	SF/UV Minimum UV Dosage (mJ/cm2)
1/1/15	0.00	NO FLOW	NO FLOW	NO FLOW	NO FLOW	NO FLOW	NO FLOW
1/2/15	0.00	NO FLOW	NO FLOW	NO FLOW	NO FLOW	NO FLOW	NO FLOW
1/3/15	0.00	NO FLOW	NO FLOW	NO FLOW	NO FLOW	NO FLOW	NO FLOW
1/4/15	0.00	NO FLOW	NO FLOW	NO FLOW	NO FLOW	NO FLOW	NO FLOW
1/5/15	0.00	NO FLOW	NO FLOW	NO FLOW	NO FLOW	NO FLOW	NO FLOW
1/6/15	0.00	NO FLOW	NO FLOW	NO FLOW	NO FLOW	NO FLOW	NO FLOW
1/7/15	0.00	NO FLOW	NO FLOW	NO FLOW	NO FLOW	NO FLOW	NO FLOW
1/8/15	0.00	NO FLOW	NO FLOW	NO FLOW	NO FLOW	NO FLOW	NO FLOW
1/9/15	0.00	NO FLOW	NO FLOW	NO FLOW	NO FLOW	NO FLOW	NO FLOW
1/10/15	0.00	NO FLOW	NO FLOW	NO FLOW	NO FLOW	NO FLOW	NO FLOW
1/11/15	0.00	NO FLOW	NO FLOW	NO FLOW	NO FLOW	NO FLOW	NO FLOW
1/12/15	0.00	NO FLOW	NO FLOW	NO FLOW	NO FLOW	NO FLOW	NO FLOW
1/13/15	0.00	NO FLOW	NO FLOW	NO FLOW	NO FLOW	NO FLOW	NO FLOW
1/14/15	0.00	NO FLOW	NO FLOW	NO FLOW	NO FLOW	NO FLOW	NO FLOW
1/15/15	0.00	NO FLOW	NO FLOW	NO FLOW	NO FLOW	NO FLOW	NO FLOW
1/16/15	0.00	NO FLOW	NO FLOW	NO FLOW	NO FLOW	NO FLOW	NO FLOW
1/17/15	0.00	NO FLOW	NO FLOW	NO FLOW	NO FLOW	NO FLOW	NO FLOW
1/18/15	0.00	NO FLOW	NO FLOW	NO FLOW	NO FLOW	NO FLOW	NO FLOW
1/19/15	0.00	NO FLOW	NO FLOW	NO FLOW	NO FLOW	NO FLOW	NO FLOW
1/20/15	0.00	NO FLOW	NO FLOW	NO FLOW	NO FLOW	NO FLOW	NO FLOW
1/21/15	0.00	NO FLOW	NO FLOW	NO FLOW	NO FLOW	NO FLOW	NO FLOW
1/22/15	0.00	NO FLOW	NO FLOW	NO FLOW	NO FLOW	NO FLOW	NO FLOW
1/23/15	0.00	NO FLOW	NO FLOW	NO FLOW	NO FLOW	NO FLOW	NO FLOW
1/24/15	0.00	NO FLOW	NO FLOW	NO FLOW	NO FLOW	NO FLOW	NO FLOW
1/25/15	0.00	NO FLOW	NO FLOW	NO FLOW	NO FLOW	NO FLOW	NO FLOW
1/26/15	0.00	NO FLOW	NO FLOW	NO FLOW	NO FLOW	NO FLOW	NO FLOW
1/27/15	0.00	NO FLOW	NO FLOW	NO FLOW	NO FLOW	NO FLOW	NO FLOW
1/28/15	0.00	NO FLOW	NO FLOW	NO FLOW	NO FLOW	NO FLOW	NO FLOW
1/29/15	0.00	NO FLOW	NO FLOW	NO FLOW	NO FLOW	NO FLOW	NO FLOW
1/30/15	1.90	2.59	1.53	0.00	67.45	642.88	142.34
1/31/15	2.70	3.52	1.66	0.00	69.86	767.27	167.92
Monthly Totals							
MAX.	2.70	3.52	1.66	0.00	69.86	767.27	167.92
MIN.	0.00	2.59	1.53	0.00	67.45	642.88	142.34
AVG.	2.30	3.06	1.60	0.00	68.65	705.08	155.13
TOT.	4.60	6.11					
Permit Values			Max = 2	Max = 5	Min = 55		Min = 100
Note: Daily values are taken from 7AM to 7AM of the following day.							

	TIPS Influent Flow Total (Mgal)	SF/UV Recycled Water Flow Total (Mgal)	SF/UV Average Product Turbidity (NTU)	SF/UV -% of time Product Turbidity>5	SF/UV Average UVT (%)	SF/UV Average UV Dosage (mJ/cm2)	SF/UV Minimum UV Dosage (mJ/cm2)
2/1/15	1.20	0.89	1.58	0.00	72.05	712.24	283.71
2/2/15	0.00	NO FLOW	NO FLOW	NO FLOW	NO FLOW	NO FLOW	NO FLOW
2/3/15	2.40	1.89	1.37	0.00	73.42	979.05	238.43
2/4/15	2.50	2.25	1.50	0.00	73.85	672.21	233.01
2/5/15	0.20	0.19	1.76	0.00	72.53	318.50	306.42
2/6/15	0.00	NO FLOW	NO FLOW	NO FLOW	NO FLOW	NO FLOW	NO FLOW
2/7/15	0.00	NO FLOW	NO FLOW	NO FLOW	NO FLOW	NO FLOW	NO FLOW
2/8/15	0.00	NO FLOW	NO FLOW	NO FLOW	NO FLOW	NO FLOW	NO FLOW
2/9/15	0.00	NO FLOW	NO FLOW	NO FLOW	NO FLOW	NO FLOW	NO FLOW
2/10/15	0.00	NO FLOW	NO FLOW	NO FLOW	NO FLOW	NO FLOW	NO FLOW
2/11/15	0.00	NO FLOW	NO FLOW	NO FLOW	NO FLOW	NO FLOW	NO FLOW
2/12/15	0.00	NO FLOW	NO FLOW	NO FLOW	NO FLOW	NO FLOW	NO FLOW
2/13/15	0.00	NO FLOW	NO FLOW	NO FLOW	NO FLOW	NO FLOW	NO FLOW
2/14/15	0.00	NO FLOW	NO FLOW	NO FLOW	NO FLOW	NO FLOW	NO FLOW
2/15/15	0.00	NO FLOW	NO FLOW	NO FLOW	NO FLOW	NO FLOW	NO FLOW
2/16/15	0.00	NO FLOW	NO FLOW	NO FLOW	NO FLOW	NO FLOW	NO FLOW
2/17/15	0.00	NO FLOW	NO FLOW	NO FLOW	NO FLOW	NO FLOW	NO FLOW
2/18/15	0.00	NO FLOW	NO FLOW	NO FLOW	NO FLOW	NO FLOW	NO FLOW
2/19/15	0.00	NO FLOW	NO FLOW	NO FLOW	NO FLOW	NO FLOW	NO FLOW
2/20/15	0.00	NO FLOW	NO FLOW	NO FLOW	NO FLOW	NO FLOW	NO FLOW
2/21/15	0.00	NO FLOW	NO FLOW	NO FLOW	NO FLOW	NO FLOW	NO FLOW
2/22/15	0.00	NO FLOW	NO FLOW	NO FLOW	NO FLOW	NO FLOW	NO FLOW
2/23/15	0.00	NO FLOW	NO FLOW	NO FLOW	NO FLOW	NO FLOW	NO FLOW
2/24/15	0.00	NO FLOW	NO FLOW	NO FLOW	NO FLOW	NO FLOW	NO FLOW
2/25/15	0.00	NO FLOW	NO FLOW	NO FLOW	NO FLOW	NO FLOW	NO FLOW
2/26/15	0.00	NO FLOW	NO FLOW	NO FLOW	NO FLOW	NO FLOW	NO FLOW
2/27/15	1.50	1.79	1.75	0.00	65.38	240.28	229.42
2/28/15	0.40	0.52	1.71	0.00	66.36	236.70	226.20
		0.00	1.71	0.00	66.36	236.70	9999.00
		0.77	1.71	0.00	66.36	236.70	9999.00
Monthly Totals							
MAX.	2.50	2.25	1.76	0.00	73.85	979.05	9999.00
MIN.	0.00	0.00	1.37	0.00	65.38	236.70	226.20
AVG.	1.37	1.19	1.64	0.00	69.54	454.05	2689.40
TOT.	8.20	8.32					
Permit Values			Max = 2	Max = 5	Min = 55		Min = 100
Note: Daily values are taken from 7AM to 7AM of the following day.							

	TIPS Influent Flow Total (Mgal)	SF/UV Recycled Water Flow Total (Mgal)	SF/UV Average Product Turbidity (NTU)	SF/UV -% of time Product Turbidity>5	SF/UV Average UV T (%)	SF/UV Average UV Dosage (mJ/cm2)	SF/UV Minimum UV Dosage (mJ/cm2)
3/1/15	0.00	NO FLOW	NO FLOW	NO FLOW	NO FLOW	NO FLOW	NO FLOW
3/2/15	0.00	NO FLOW	NO FLOW	NO FLOW	NO FLOW	NO FLOW	NO FLOW
3/3/15	1.70	1.98	1.82	0.00	65.95	211.66	129.70
3/4/15	2.50	1.66	1.61	0.00	65.51	574.64	182.20
3/5/15	2.40	2.10	1.44	0.00	65.23	567.62	201.83
3/6/15	2.10	1.88	1.36	0.00	66.06	677.97	200.78
3/7/15	2.10	1.71	1.50	0.00	65.86	633.16	217.59
3/8/15	0.20	0.23	1.46	0.00	66.87	263.44	251.90
3/9/15	0.00	NO FLOW	NO FLOW	NO FLOW	NO FLOW	NO FLOW	NO FLOW
3/10/15	3.00	2.40	1.74	0.00	65.36	419.77	84.22
3/11/15	3.50	3.51	1.83	0.00	67.26	439.03	132.19
3/12/15	2.80	2.23	1.74	0.00	66.62	605.61	152.17
3/13/15	2.70	1.37	1.96	0.00	67.57	909.42	153.87
3/14/15	2.10	1.81	1.54	0.00	65.67	968.96	177.38
3/15/15	2.50	1.83	1.69	0.00	64.49	768.63	144.14
3/16/15	2.10	0.27	1.69	0.00	64.49	768.63	9999.00
3/17/15	3.20	2.10	1.61	0.00	67.48	198.16	104.52
3/18/15	3.10	2.32	1.91	0.00	66.56	193.20	149.52
3/19/15	3.20	3.38	1.79	0.00	67.67	205.85	173.15
3/20/15	3.60	2.74	1.86	0.00	67.87	210.98	177.65
3/21/15	3.60	3.08	1.69	0.00	67.68	220.94	150.31
3/22/15	2.60	2.17	1.64	0.00	68.86	279.02	132.43
3/23/15	2.50	1.45	1.93	0.00	67.97	252.14	170.64
3/24/15	2.70	1.73	1.95	0.00	70.55	370.71	197.10
3/25/15	2.60	2.55	1.68	0.00	69.04	247.97	214.83
3/26/15	4.20	3.08	1.93	0.00	67.44	199.75	116.66
3/27/15	5.20	3.20	1.80	0.00	66.96	255.89	124.36
3/28/15	4.50	4.07	1.75	0.00	66.12	229.16	157.11
3/29/15	2.60	2.26	1.66	0.00	65.47	231.93	152.21
3/30/15	2.30	1.74	1.70	0.00	65.88	254.32	179.56
3/31/15	3.00	2.55	1.55	0.00	66.63	195.40	168.23
Monthly Totals							
MAX.	5.20	4.07	1.96	0.00	70.55	968.96	9999.00
MIN.	0.00	0.23	1.36	0.00	64.49	193.20	84.22
AVG.	2.81	2.19	1.71	0.00	66.75	405.50	514.12
TOT.	78.60	61.41					
Permit Values			Max = 2	Max = 5	Min = 55		Min = 100
Note: Daily values are taken from 7AM to 7AM of the following day.							
Note: March 10, 2015 SF/UV Dosage Daily Minmum = 133.26							

	TIPS Influent Flow Total (Mgal)	SF/UV Recycled Water Flow Total (Mgal)	SF/UV Average Product Turbidity (NTU)	SF/UV -% of time Product Turbidity>5	SF/UV Average UVT (%)	SF/UV Average UV Dosage (mJ/cm2)	SF/UV Minimum UV Dosage (mJ/cm2)
4/1/15	3.20	2.66	1.27	0.00	69.25	206.43	176.45
4/2/15	4.10	3.49	1.37	0.00	68.33	228.51	172.94
4/3/15	4.80	4.02	1.23	0.00	68.29	230.25	155.31
4/4/15	3.00	2.55	1.23	0.00	67.62	241.44	171.02
4/5/15	2.30	1.89	1.47	0.00	69.90	286.46	199.11
4/6/15	3.10	2.38	1.73	0.00	69.05	247.28	164.70
4/7/15	3.20	2.86	1.28	0.00	69.28	222.47	185.17
4/8/15	2.90	0.32	1.35	0.00	68.00	224.75	197.04
4/9/15	2.90	0.01	1.35	0.00	68.00	224.75	9999.00
4/10/15	4.00	2.86	0.94	0.00	64.52	175.80	100.89
4/11/15	4.40	3.59	1.44	0.00	66.23	177.83	132.59
4/12/15	3.20	2.80	1.63	0.00	67.43	203.31	155.69
4/13/15	3.50	2.98	1.20	0.00	69.40	214.85	176.29
4/14/15	4.50	3.87	1.35	0.00	69.53	200.68	168.29
4/15/15	4.50	3.91	1.60	0.00	69.12	192.33	163.52
4/16/15	4.90	4.15	1.61	0.00	69.43	242.17	168.51
4/17/15	4.70	3.93	1.71	0.00	69.77	194.33	146.53
4/18/15	4.30	3.85	1.65	0.00	70.21	213.98	178.78
4/19/15	3.30	2.90	1.78	0.00	69.65	225.49	177.62
4/20/15	4.20	3.53	1.54	0.00	70.26	216.05	182.99
4/21/15	4.80	4.22	1.48	0.00	69.74	188.54	168.33
4/22/15	4.40	3.79	1.49	0.00	69.48	197.61	171.07
4/23/15	4.30	3.73	1.37	0.00	70.25	211.32	184.65
4/24/15	3.90	3.30	1.15	0.00	72.26	258.92	196.32
4/25/15	1.70	1.31	1.10	0.00	72.75	335.52	199.73
4/26/15	1.80	1.43	1.38	0.00	69.55	294.92	251.40
4/27/15	2.20	1.80	1.19	0.00	71.23	322.47	217.94
4/28/15	4.20	3.50	1.16	0.00	71.57	230.96	127.96
4/29/15	4.20	3.50	1.33	0.00	71.00	222.28	184.08
4/30/15	4.20	3.52	1.65	0.00	69.35	206.23	157.01
Monthly Totals							
MAX.	4.90	4.22	1.78	0.00	72.75	335.52	9999.00
MIN.	1.70	0.01	0.94	0.00	64.52	175.80	100.89
AVG.	3.69	2.96	1.40	0.00	69.35	227.93	501.03
TOT.	110.70	88.67					
Permit Values			Max = 2	Max = 5	Min = 55		Min = 100
Note: Daily values are taken from 7AM to 7AM of the following day.							

	TIPS Influent Flow Total (Mgal)	SF/UV Recycled Water Flow Total (Mgal)	SF/UV Average Product Turbidity (NTU)	SF/UV -% of time Product Turbidity>5	SF/UV Average UVT (%)	SF/UV Average UV Dosage (mJ/cm2)	SF/UV Minimum UV Dosage (mJ/cm2)
5/1/15	4.90	4.29	1.67	0.00	69.79	251.65	148.02
5/2/15	4.70	4.02	1.67	0.00	68.53	180.69	93.05
5/3/15	4.20	3.76	1.40	0.00	72.22	241.79	184.40
5/4/15	4.80	4.03	1.49	0.00	70.86	211.86	151.79
5/5/15	4.80	4.01	1.56	0.00	65.23	153.41	125.06
5/6/15	4.80	4.17	1.49	0.00	64.94	149.73	134.29
5/7/15	4.80	4.33	1.53	0.00	66.47	161.26	134.67
5/8/15	3.60	3.09	1.73	0.00	67.41	184.33	164.47
5/9/15	2.20	1.40	1.82	0.00	67.90	248.08	168.04
5/10/15	2.70	2.25	1.45	0.00	65.84	206.31	163.80
5/11/15	4.40	3.62	1.43	0.00	65.91	165.12	122.86
5/12/15	4.70	4.14	1.22	0.00	67.38	174.48	146.48
5/13/15	4.80	4.15	1.52	0.00	67.76	172.05	153.54
5/14/15	2.80	2.16	1.82	0.00	68.96	237.63	168.82
5/15/15	3.00	1.76	1.41	0.00	71.32	235.99	201.29
5/16/15	1.70	0.69	1.49	0.00	71.73	312.64	272.50
5/17/15	2.60	1.94	1.79	0.00	65.80	192.46	150.06
5/18/15	3.30	2.72	1.69	0.00	68.42	191.64	173.94
5/19/15	3.50	2.86	1.63	0.00	69.44	233.82	180.20
5/20/15	4.10	3.32	1.52	0.00	69.93	211.96	175.56
5/21/15	4.60	3.99	1.64	0.00	69.64	192.01	171.99
5/22/15	3.10	2.32	1.71	0.00	70.65	275.23	181.01
5/23/15	2.80	2.42	1.81	0.00	69.83	262.04	219.76
5/24/15	2.30	1.83	1.71	0.00	70.88	323.95	268.18
5/25/15	3.30	2.80	1.62	0.00	71.26	230.70	196.80
5/26/15	3.40	2.42	1.71	0.00	70.97	222.08	181.05
5/27/15	3.90	3.23	1.69	0.00	70.65	221.75	191.73
5/28/15	5.50	4.65	1.61	0.00	71.21	281.95	189.16
5/29/15	5.20	4.16	1.48	0.00	72.53	352.81	265.51
5/30/15	4.00	3.05	1.72	0.00	70.71	309.82	204.22
5/31/15	3.30	2.79	1.67	0.00	71.43	256.97	200.12
Monthly Totals							
MAX.	5.50	4.65	1.82	0.00	72.53	352.81	272.50
MIN.	1.70	0.69	1.22	0.00	64.94	149.73	93.05
AVG.	3.80	3.11	1.60	0.00	69.21	227.30	176.85
TOT.	117.80	96.36					
Permit Values			Max = 2	Max = 5	Min = 55		Min = 100
Note: Daily values are taken from 7AM to 7AM of the following day.							
Note: May 2, 2015 SF/UV Dosage Daily Minmum = 107.144							

	TIPS Influent Flow Total (Mgal)	SF/UV Recycled Water Flow Total (Mgal)	SF/UV Average Product Turbidity (NTU)	SF/UV -% of time Product Turbidity>5	SF/UV Average UVT (%)	SF/UV Average UV Dosage (mJ/cm2)	SF/UV Minimum UV Dosage (mJ/cm2)
6/1/15	3.40	2.54	1.65	0.00	71.87	266.52	168.05
6/2/15	5.00	3.80	1.55	0.00	71.90	267.07	220.43
6/3/15	4.70	3.97	1.53	0.00	72.12	304.91	201.12
6/4/15	5.20	4.26	1.47	0.00	71.70	306.04	188.71
6/5/15	5.00	3.92	1.47	0.00	71.51	309.41	132.65
6/6/15	4.70	4.16	1.69	0.00	69.26	226.61	169.23
6/7/15	4.40	3.69	1.66	0.00	68.79	201.24	158.05
6/8/15	4.40	3.64	1.68	0.00	69.53	203.94	103.08
6/9/15	6.20	5.44	1.72	0.00	70.95	229.59	183.84
6/10/15	6.10	5.27	1.68	0.00	71.65	251.79	206.91
6/11/15	2.80	0.93	1.52	0.00	63.13	190.78	131.97
6/12/15	4.20	3.26	1.64	0.00	61.49	138.69	118.17
6/13/15	4.90	3.16	1.65	0.00	62.78	142.16	129.10
6/14/15	4.60	3.58	1.77	0.00	62.32	148.07	118.93
6/15/15	4.70	3.88	1.45	0.00	61.90	139.36	111.65
6/16/15	5.30	4.47	1.61	0.00	63.61	164.56	134.64
6/17/15	5.60	4.49	1.66	0.00	62.92	191.51	150.97
6/18/15	5.90	4.98	1.80	0.00	62.37	170.22	43.31
6/19/15	6.00	5.10	1.50	0.00	62.09	164.50	146.11
6/20/15	4.10	2.97	1.46	0.00	59.91	147.18	98.83
6/21/15	4.40	3.42	1.26	0.00	60.87	135.27	96.69
6/22/15	4.90	4.09	1.41	0.00	62.16	147.26	117.23
6/23/15	6.30	5.49	1.70	0.00	63.09	159.27	133.72
6/24/15	6.60	5.07	1.69	0.00	63.54	158.95	109.26
6/25/15	6.50	5.50	1.67	0.00	61.92	148.82	95.57
6/26/15	5.70	4.89	1.70	0.00	60.83	168.35	108.48
6/27/15	5.00	3.78	1.74	0.00	61.09	166.92	103.14
6/28/15	4.10	4.81	1.86	0.00	64.50	153.42	97.61
6/29/15	5.50	4.68	1.50	0.00	65.54	173.28	129.76
6/30/15	6.90	5.60	1.80	0.00	62.90	142.48	122.52
Monthly Totals							
MAX.	6.90	5.60	1.86	0.00	72.12	309.41	220.43
MIN.	2.80	0.93	1.26	0.00	59.91	135.27	43.31
AVG.	5.10	4.16	1.62	#DIV/0!	65.27	190.61	134.32
TOT.	153.10	124.87					
Permit Values			Max = 2	Max = 5	Min = 55		Min = 100

Note: Daily values are taken from 7AM to 7AM of the following day.

6/18/2015 - 2 minutes when Minimum dosage averaged= 43.07 Coliform 2 MPN

6/20/2015 - 26 minutes when minimum dosage averaged = 98.58 Coliform <2 MPN

	TIPS Influent Flow Total (Mgal)	SF/UV Recycled Water Flow Total (Mgal)	SF/UV Average Product Turbidity (NTU)	SF/UV -% of time Product Turbidity>5	SF/UV Average UVT (%)	SF/UV Average UV Dosage (mJ/cm2)	SF/UV Minimum UV Dosage (mJ/cm2)
7/1/15	6.90	6.07	1.48	0.00	63.99	151.77	132.70
7/2/15	6.50	5.43	1.69	0.00	64.79	170.94	8.10
7/3/15	6.80	5.15	1.70	0.00	59.07	135.77	104.80
7/4/15	5.20	4.21	1.36	0.00	58.47	148.71	90.15
7/5/15	4.50	3.39	1.40	0.00	59.00	120.66	87.47
7/6/15	6.80	5.31	1.53	0.00	61.18	176.03	89.06
7/7/15	6.80	5.33	1.80	0.00	62.29	149.97	91.73
7/8/15	6.50	5.30	1.38	0.00	76.35	272.32	211.99
7/9/15	6.40	5.31	1.63	0.00	68.22	195.69	0.00
7/10/15	6.20	4.41	1.81	0.00	67.61	197.35	168.43
7/11/15	3.80	3.01	1.31	0.00	69.23	281.31	152.45
7/12/15	3.90	3.21	1.77	0.00	63.32	184.93	155.73
7/13/15	5.80	4.76	1.71	0.00	63.20	162.43	82.00
7/14/15	6.30	5.39	1.68	0.00	64.72	179.13	151.77
7/15/15	4.00	2.86	1.39	0.00	67.32	219.22	141.28
7/16/15	6.30	5.24	1.42	0.00	65.82	163.56	141.53
7/17/15	6.90	5.64	1.41	0.00	66.37	162.57	129.35
7/18/15	5.00	3.82	1.50	0.00	66.37	193.83	135.29
7/19/15	4.80	4.00	1.56	0.00	65.85	170.21	132.09
7/20/15	6.60	5.42	1.55	0.00	66.33	173.97	148.13
7/21/15	6.70	5.74	1.60	0.00	66.30	172.13	154.02
7/22/15	6.20	5.32	1.54	0.00	66.94	191.99	160.86
7/23/15	5.60	4.56	1.44	0.00	67.39	221.80	182.53
7/24/15	6.10	5.21	1.40	0.00	67.66	204.81	162.62
7/25/15	5.10	3.20	1.45	0.00	68.67	256.27	169.16
7/26/15	4.70	3.81	1.37	0.00	69.67	300.05	226.99
7/27/15	6.80	5.63	1.38	0.00	67.13	184.96	134.77
7/28/15	7.00	5.89	1.61	0.00	61.92	147.13	94.57
7/29/15	7.00	5.80	1.53	0.00	62.24	145.77	0.00
7/30/15	7.00	5.91	1.85	0.00	65.55	175.60	133.07
7/31/15	6.30	5.01	1.60	0.00	66.73	206.43	136.59
Monthly Totals							
MAX.	7.00	6.07	1.85	0.00	76.35	300.05	226.99
MIN.	3.80	2.86	1.31	0.00	58.47	120.66	8.10
AVG.	5.95	4.82	1.54	#DIV/0!	65.47	187.65	134.80
TOT.	184.50	149.35					
Permit Values			Max = 2	Max = 5	Min = 55		Min = 100
Note: Daily values are taken from 7AM to 7AM of the following day.							
7/2/2015 - 4 minutes when dosaged= 0 Coliform <2 MPN							

	TIPS Influent Flow Total (Mgal)	SF/UV Recycled Water Flow Total (Mgal)	SF/UV Average Product Turbidity (NTU)	SF/UV -% of time Product Turbidity>5	SF/UV Average UVT (%)	SF/UV Average UV Dosage (mJ/cm2)	SF/UV Minimum UV Dosage (mJ/cm2)
8/1/15	4.50	3.68	1.60	0.00	66.30	235.19	156.60
8/2/15	4.90	3.99	1.72	0.00	62.77	147.64	115.15
8/3/15	6.10	4.09	1.41	0.00	58.61	135.80	105.31
8/4/15	6.90	5.87	1.41	0.00	69.28	198.83	104.03
8/5/15	6.70	5.59	1.60	0.00	69.65	199.39	149.79
8/6/15	6.40	5.11	1.60	0.00	69.43	208.65	120.59
8/7/15	5.10	3.66	1.91	0.00	68.78	248.36	212.44
8/8/15	4.30	3.43	1.66	0.00	69.53	240.22	188.37
8/9/15	4.30	3.43	1.79	0.00	66.93	198.03	166.65
8/10/15	4.90	3.76	1.62	0.00	68.51	188.36	85.51
8/11/15	6.20	4.99	1.62	0.00	69.90	219.04	185.76
8/12/15	6.70	5.57	1.71	0.00	70.95	219.04	183.94
8/13/15	5.90	4.38	1.62	0.00	72.03	255.40	196.11
8/14/15	6.20	5.18	1.45	0.00	72.03	238.53	194.34
8/15/15	5.60	3.58	1.45	0.00	72.03	256.90	208.74
8/16/15	4.90	3.58	1.45	0.00	71.28	288.56	240.58
8/17/15	6.60	5.11	1.45	0.00	71.88	234.42	162.66
8/18/15	7.00	5.85	1.58	0.00	65.99	174.63	126.85
8/19/15	6.30	5.28	1.58	0.00	64.53	188.99	114.49
8/20/15	6.30	5.11	1.58	0.00	71.43	252.85	166.21
8/21/15	6.90	4.48	1.46	0.00	66.31	178.18	136.78
8/22/15	5.80	4.17	1.64	0.00	61.99	167.75	137.74
8/23/15	4.20	2.55	1.49	0.00	61.02	183.40	146.26
8/24/15	5.90	4.77	1.49	0.00	61.93	177.95	119.67
8/25/15	6.70	5.55	1.43	0.00	61.50	163.30	109.27
8/26/15	6.70	5.55	1.43	0.00	60.70	158.99	139.81
8/27/15	6.00	4.01	1.52	0.00	60.30	176.29	140.77
8/28/15	6.70	5.79	1.52	0.00	60.30	154.52	125.41
8/29/15	5.00	3.66	1.52	0.00	57.66	189.22	0.00
8/30/15	4.10	3.04	1.52	0.00	57.45	184.21	112.08
8/31/15	5.60	3.42	1.51	0.00	59.50	142.96	119.68
Monthly Totals							
MAX.	7.00	5.87	1.91	0.00	72.03	288.56	240.58
MIN.	4.10	2.55	1.41	0.00	57.45	135.80	85.51
AVG.	5.79	4.46	1.56	#DIV/0!	65.82	200.18	149.05
TOT.	179.40	138.26					
Permit Values			Max = 2	Max = 5	Min = 55		Min = 100
Note: Daily values are taken from 7AM to 7AM of the following day.							
*10/26/08	Bypassed low	UVI					

	TIPS Influent Flow Total (Mgal)	SF/UV Recycled Water Flow Total (Mgal)	SF/UV Average Product Turbidity (NTU)	SF/UV -% of time Product Turbidity>5	SF/UV Average UVT (%)	SF/UV Average UV Dosage (mJ/cm2)	SF/UV Minimum UV Dosage (mJ/cm2)
9/1/15							
9/1/15	7.00	6.03	1.51	0.00	63.33	146.40	132.41
9/2/15	7.00	6.03	1.31	0.05	63.69	148.94	130.32
9/3/15	4.30	3.06	1.31	0.05	63.93	191.11	130.32
9/4/15	6.20	4.93	1.31	0.05	63.42	160.89	134.57
9/5/15	6.00	4.36	1.42	0.05	62.94	168.51	133.94
9/6/15	4.30	2.42	1.58	0.05	62.46	207.38	136.36
9/7/15	4.80	3.89	1.58	0.05	62.46	143.35	98.36
9/8/15	4.80	3.47	1.58	0.05	63.28	174.60	11.06
9/9/15	7.70	6.59	1.25	0.05	64.24	197.20	145.99
9/10/15	7.50	6.33	1.25	0.05	64.56	200.68	174.87
9/11/15	7.50	5.95	1.25	0.05	64.56	186.74	155.61
9/12/15	5.10	3.67	1.54	0.05	64.56	220.97	148.59
9/13/15	4.80	3.67	1.79	0.05	62.32	214.21	170.58
9/14/15	4.80	3.91	1.62	0.05	64.64	231.84	92.84
9/15/15	0.00	0.00	0.00	0.00	0.00	0.00	0.00
9/16/15	0.00	0.00	0.00	0.00	0.00	0.00	0.00
9/17/15	4.80	3.73	1.45	0.00	57.61	125.03	100.31
9/18/15	5.70	4.64	1.45	0.00	57.31	135.47	96.60
9/19/15	5.20	3.31	1.45	0.00	57.31	149.10	122.11
9/20/15	5.40	3.49	1.24	0.00	57.65	155.58	97.15
9/21/15	5.90	4.80	1.24	0.00	57.52	131.08	106.19
9/22/15	0.00	0.00	0.00	0.00	0.00	0.00	0.00
9/23/15	5.50	4.58	1.29	0.00	59.03	155.07	129.77
9/24/15	5.80	4.58	1.29	0.00	59.45	147.26	128.47
9/25/15	5.80	4.58	1.29	0.00	59.27	148.56	125.30
9/26/15	4.90	2.85	1.17	0.00	59.68	189.68	141.06
9/27/15	4.60	2.85	1.49	0.00	59.26	183.46	135.11
9/28/15	5.50	4.54	1.37	0.00	63.33	189.64	159.43
9/29/15	6.30	5.03	1.37	0.00	63.86	165.87	139.25
9/30/15	5.40	4.02	1.37	0.00	64.27	203.68	144.29
Monthly Totals							
MAX.	7.70	6.59	1.79	0.05	64.64	231.84	174.87
MIN.	0.00	0.00	1.17	0.00	57.31	125.03	11.06
AVG.	5.65	4.34	1.40	0.05	61.70	173.05	126.70
TOT.	152.60	117.31					
Permit Values			Max = 2	Max = 5	Min = 55		Min = 100
Note: Daily values are taken from 7AM to 7AM of the following day.							
*10/26/08	Bypassed low	UVI					

	TIPS Influent Flow Total (Mgal)	SF/UV Recycled Water Flow Total (Mgal)	SF/UV Average Product Turbidity (NTU)	SF/UV -% of time Product Turbidity>5	SF/UV Average UVT (%)	SF/UV Average UV Dosage (mJ/cm2)	SF/UV Minimum UV Dosage (mJ/cm2)
10/1/15	3.80	2.64	1.37	0.00	63.37	188.47	140.79
10/2/15	3.40	2.64	1.24	0.00	64.29	176.89	153.93
10/3/15	4.20	3.50	1.39	0.00	63.02	157.21	103.50
10/4/15	3.90	2.61	1.52	0.00	62.70	181.36	140.64
10/5/15	4.60	3.59	1.52	0.00	63.03	148.56	125.75
10/6/15	4.90	3.93	1.52	0.00	63.82	149.13	106.61
10/7/15	4.90	4.00	1.37	0.00	63.87	149.78	134.26
10/8/15	4.40	3.09	1.29	0.00	64.31	169.56	134.58
10/9/15	4.80	3.86	1.14	0.00	64.77	153.84	138.61
10/10/15	4.00	2.76	1.26	0.00	63.91	161.61	143.56
10/11/15	3.30	2.51	1.47	0.00	62.38	161.61	130.84
10/12/15	3.30	2.51	1.11	0.00	64.44	203.58	131.77
10/13/15	5.30	4.30	1.11	0.00	63.37	167.09	140.58
10/14/15	5.90	4.69	1.11	0.00	60.61	205.14	133.44
10/15/15	4.50	3.09	1.11	0.00	57.37	150.10	102.92
10/16/15	4.30	3.26	1.01	0.00	64.35	174.47	102.92
10/17/15	4.10	3.39	1.19	0.00	64.14	172.85	125.79
10/18/15	2.80	1.80	1.19	0.00	65.09	230.93	167.57
10/19/15	3.40	2.57	1.19	0.00	65.38	194.08	166.82
10/20/15	4.60	3.93	0.95	0.00	66.39	179.82	153.57
10/21/15	4.60	3.76	0.95	0.00	65.64	167.01	140.66
10/22/15	0.70	1.69	1.03	0.00	64.17	149.57	146.36
10/23/15	4.30	3.93	1.21	0.00	62.63	170.62	145.39
10/24/15	4.10	2.88	1.21	0.00	61.25	196.60	132.98
10/25/15	2.60	1.60	1.34	0.00	60.62	199.38	130.88
10/26/15	3.30	2.45	1.24	0.00	60.05	145.91	85.23
10/27/15	0.00	0.00	0.00	0.00	0.00	0.00	0.00
10/28/15	0.00	0.00	0.00	0.00	0.00	0.00	0.00
10/29/15	0.00	0.00	0.00	0.00	0.00	0.00	0.00
10/30/15	4.80	3.76	1.37	0.00	63.97	160.34	0.00
10/31/15	0.00	0.00	0.00	0.00	0.00	0.00	0.00
Monthly Totals							
MAX.	5.90	4.69	1.52	0.00	66.39	230.93	167.57
MIN.	0.00	0.00	0.95	0.00	57.37	145.91	85.23
AVG.	4.03	3.14	1.24	#DIV/0!	63.29	172.80	133.08
TOT.	108.80	84.72					
Permit Values			Max = 2	Max = 5	Min = 55		Min = 100
Note: Daily values are taken from 7AM to 7AM of the following day.							
*10/26/08	Bypassed low	UVI					

	TIPS Influent Flow Total (Mgal)	SF/UV Recycled Water Flow Total (Mgal)	SF/UV Average Product Turbidity (NTU)	SF/UV -% of time Product Turbidity>5	SF/UV Average UVT (%)	SF/UV Average UV Dosage (mJ/cm2)	SF/UV Minimum UV Dosage (mJ/cm2)
11/1/15	2.30	0.00	1.13	0.00	66.02	285.71	266.42
11/2/15	2.90	1.49	1.35	0.00	61.22	183.65	144.50
11/3/15	0.00	0.00	0.00	0.00	0.00	0.00	0.00
11/4/15	0.00	0.00	0.00	0.00	0.00	0.00	0.00
11/5/15	0.00	0.00	0.00	0.00	0.00	0.00	0.00
11/6/15	0.00	0.00	0.00	0.00	0.00	0.00	0.00
11/7/15	0.00	0.00	0.00	0.00	0.00	0.00	0.00
11/8/15	0.00	0.00	0.00	0.00	0.00	0.00	0.00
11/9/15	0.00	1.42	0.00	0.00	0.00	0.00	0.00
11/10/15	2.50	0.21	1.22	0.00	59.90	157.24	137.07
11/11/15	0.40	0.00	1.22	0.00	59.90	157.24	9999.00
11/12/15	0.00	0.96	1.22	0.00	59.90	157.24	9999.00
11/13/15	0.00	0.17	1.22	0.00	59.90	157.24	9999.00
11/14/15	0.00	0.00	1.22	0.00	59.90	157.24	9999.00
11/15/15	0.00	0.71	1.22	0.00	59.90	157.24	9999.00
11/16/15	0.00	1.31	1.22	0.00	59.90	157.24	9999.00
11/17/15	0.00	0.97	1.22	0.00	59.90	157.24	9999.00
11/18/15	0.00	0.17	1.22	0.00	59.90	157.24	9999.00
11/19/15	0.00	0.00	1.22	0.00	59.90	157.24	9999.00
11/20/15	0.00	1.20	1.22	0.00	59.90	157.24	9999.00
11/21/15	0.00	0.32	1.22	0.00	59.90	157.24	9999.00
11/22/15	0.00	0.00	1.22	0.00	59.90	157.24	9999.00
11/23/15	0.00	0.90	1.22	0.00	59.90	157.24	9999.00
11/24/15	0.00	0.16	1.22	0.00	59.90	157.24	9999.00
11/25/15	1.10	0.62	1.22	0.00	59.90	157.24	9999.00
11/26/15	2.10	0.62	1.22	0.00	59.90	157.24	9999.00
11/27/15	2.10	0.15	1.22	0.00	59.90	157.24	9999.00
11/28/15	2.60	0.00	1.22	0.00	59.90	157.24	9999.00
11/29/15	2.90	0.00	1.22	0.00	59.90	157.24	9999.00
11/30/15	2.40	0.00	1.22	0.00	59.90	157.24	9999.00
Monthly Totals							
MAX.	2.90	1.49	1.35	0.00	66.02	285.71	9999.00
MIN.	0.00	0.00	1.13	0.00	59.90	157.24	137.07
AVG.	2.13	0.57	1.22	#DIV/0!	60.22	163.98	8718.61
TOT.	21.30	11.38					
Permit Values			Max = 2	Max = 5	Min = 55		Min = 100
Note: Daily values are taken from 7AM to 7AM of the following day.							
*10/26/08	Bypassed low	UVI					

	TIPS Influent Flow Total (Mgal)	SF/UV Recycled Water Flow Total (Mgal)	SF/UV Average Product Turbidity (NTU)	SF/UV -% of time Product Turbidity>5	SF/UV Average UVT (%)	SF/UV Average UV Dosage (mJ/cm2)	SF/UV Minimum UV Dosage (mJ/cm2)
12/1/15	2.70	0.00	1.23	0.00	59.90	157.24	9999.00
12/2/15	1.30	1.07	1.23	0.00	59.90	157.24	9999.00
12/3/15	0.00	1.07	1.23	0.00	59.90	157.24	9999.00
12/4/15	0.00	0.12	1.23	0.00	59.90	157.24	9999.00
12/5/15	0.00	0.00	1.23	0.00	59.90	157.24	9999.00
12/6/15	0.00	0.00	1.23	0.00	59.90	157.24	9999.00
12/7/15	0.00	0.00	1.23	0.00	59.90	157.24	9999.00
12/8/15	0.10	0.75	1.23	0.00	59.90	157.24	9999.00
12/9/15	0.00	0.43	1.23	0.00	59.90	157.24	9999.00
12/10/15	0.00	0.00	1.23	0.00	59.90	157.24	9999.00
12/11/15	0.00	0.00	1.23	0.00	59.90	157.24	9999.00
12/12/15	0.00	0.00	1.23	0.00	59.90	157.24	9999.00
12/13/15	0.00	0.00	1.23	0.00	59.90	157.24	9999.00
12/14/15	0.00	0.63	1.23	0.00	59.90	157.24	9999.00
12/15/15	0.00	0.87	1.23	0.00	59.90	157.24	9999.00
12/16/15	0.00	0.07	1.23	0.00	59.90	157.24	9999.00
12/17/15	0.00	0.07	1.23	0.00	59.90	157.24	9999.00
12/18/15	0.00	0.54	1.23	0.00	59.90	157.24	9999.00
12/19/15	0.00	0.11	1.23	0.00	59.90	157.24	9999.00
12/20/15	0.00	0.11	1.23	0.00	59.90	157.24	9999.00
12/21/15	0.00	0.78	1.23	0.00	59.90	157.24	9999.00
12/22/15	0.00	0.05	1.23	0.00	59.90	157.24	9999.00
12/23/15	0.00	0.05	1.23	0.00	59.90	157.24	9999.00
12/24/15	0.00	0.05	1.23	0.00	59.90	157.24	9999.00
12/25/15	0.00	0.05	1.23	0.00	59.90	157.24	9999.00
12/26/15	0.00	0.05	1.23	0.00	59.90	157.24	9999.00
12/27/15	0.00	0.69	1.23	0.00	59.90	157.24	9999.00
12/28/15	0.00	0.12	1.23	0.00	59.90	157.24	9999.00
12/29/15	0.00	0.00	1.23	0.00	59.90	157.24	9999.00
12/30/15	0.00	0.00	1.23	0.00	59.90	157.24	9999.00
12/31/15	0.00	0.00	0.00	0.00	0.00	0.00	0.00
Monthly Totals							
MAX.	2.70	1.07	1.23	0.00	59.90	157.24	9999.00
MIN.	0.00	0.00	1.23	0.00	59.90	157.24	9999.00
AVG.	1.37	0.30	1.23	#DIV/0!	59.90	157.24	9999.00
TOT.	4.10	7.71					
Permit Values			Max = 2	Max = 5	Min = 55		Min = 100
Note: Daily values are taken from 7AM to 7AM of the following day.							
*10/26/08	Bypassed low	UVI					

ATTACHMENT D
DSRSD RECYCLED WATER CUSTOMER INFORMATION AND COMPLIANCE SUMMARY

- Attachment D Table 1 - Tabular Summary of Recycled Water Use by Billing Period by each user
- Attachment D Table 2 – Summary of Recycled Water Usage By Application Use Category
- Attachment D Table 3 - List of New Authorized Recycled Water Users
- Attachment D Table 4 - Results from Users' Self-Monitoring Reports
- Attachment D Table 5 - Summary of Violations Found During Site Inspections and Corrective Actions Taken
- Commercial Water Reuse Permit



**Dublin San Ramon
Services District**

Water, wastewater, recycled water

Clean Water Program

Recycled Water Use by Billing Period for Calendar Year 2015

Lic#	NAME OF SITE	Jan/Feb	Mar/Apr	May/June	Jul/Aug	Sep/Oct	Nov/Dec	Total CCF	Total MG
02-100	Extended Stay America	574	134	133	142	144	252	1,379	1.03
02-101	Emerald Pointe Bldg. A - street scape	36	37	261	495	452	438	1,719	1.29
02-103	Dublin Blvd. from Tassajara Creek to Tassajara Rd.	17	145	534	582	419	294	1,991	1.49
02-104	Emerald Glen Park	14	1,526	5,473	8,214	7,845	4,970	28,042	20.98
02-106	Central Parkway Median Arnold to Hacienda	3	43	296	271	167	69	849	0.64
02-107	Hacienda I-580 to Dublin Blvd. Medians	1	3	124	178	200	174	680	0.51
02-108	Dublin Blvd. - Dougherty Rd to Hacienda Drive	0	66	373	402	450	236	1,527	1.14
02-109	Alameda County Tassajara Creek	5	117	907	974	1,201	962	4,166	3.12
02-110	Dublin Sports Ground	122	2,785	1,665	1,472	5,887	2,707	14,638	10.95
02-111	Dublin Buick, Dublin	103	89	311	415	318	314	1,550	1.16
02-112	SAP (formerly Sybase), Dublin	0	93	405	585	671	552	2,306	1.72
02-113	Tri-Valley SPCA	75	2	1	373	387	306	1,144	0.86
02-114	Emerald Pointe Bldg. B & C	0	58	659	1,088	994	793	3,592	2.69
02-116	Waterford Place - Safeway Shopping Center @ Tassajara Rd	61	230	486	536	486	454	2,253	1.69
02-117	Tassajara Creek Subdivision (Tassajara Ranch), Dublin	120	85	77	389	494	348	1,513	1.13
02-118	Avana Dublin Station	156	148	250	489	798	676	2,517	1.88
03-105	Central Parkway Medians - Hibernia to Persimmon	3	67	93	121	150	117	551	0.41
03-119	Gleason Drive Medians	1	29	70	93	64	78	335	0.25
03-120	Arlen Ness- 6050 Dublin Blvd.	26	7	87	73	107	73	373	0.28
03-121	Summer Glen- Dublin, Ca	41	34	1,088	1,148	667	606	3,584	2.68
03-122	MicroDental- Dublin, Ca	52	191	652	1,029	982	721	3,627	2.71
03-123	San Ramon Valley Fire Station #30	14	11	91	101	99	60	376	0.28

Recycled Water Use by Billing Period

Lic#	NAME OF SITE	Jan/Feb	Mar/Apr	May/June	Jul/Aug	Sep/Oct	Nov/Dec	Total CCF	Total MG
03-124	Westport Way Park (a.k.a) Dublin Green- Dublin, Ca	0	3	22	47	45	45	162	0.12
03-125	Waterford Apartments- Dublin, Ca	43	154	324	429	376	238	1,564	1.17
04-102	Bellingham Square Park- San Ramon	0	339	992	1,721	1,667	751	5,470	4.09
04-126	East Branch Park- Harcourt & Pemberton, San Ramon	10	280	1,023	1,678	1,627	720	5,338	3.99
04-127	RA 1102- Windemere Backbone Phase 1A- San Ramon	48	123	4,587	7,455	7,612	4,205	24,030	17.97
04-128	Dublin Fire Station 18	6	98	329	399	281	214	1,327	0.99
04-129	Tassajara Meadows(I & II) Subdivision - HOA- Dublin, Ca	21	16	256	385	419	348	1,445	1.08
04-130	Dublin Ranch Golf Course- Dublin, Ca	928	5,943	18,959	31,978	30,153	10,013	97,974	73.28
04-131	Hidden Hills Elementary School- Harcourt & Albion, San Ra	4	107	734	1,182	1,031	611	3,669	2.74
04-132	Central Parkway - medians west of Glynnis Rose	30	86	194	169	212	201	892	0.67
04-133	Bray Commons Park	0	594	1,104	2,200	1,913	936	6,747	5.05
05-100	RA 1142- Windemere Backbone Phase 2- San Ramon	30	78	1,894	2,581	2,468	1,455	8,506	6.36
05-101	Fairway Ranch Medians	2	37	327	263	278	188	1,095	0.82
05-102	Hidden Valley Park-10820 Albion Rd., San Ramon	0	211	808	1,139	1,224	564	3,946	2.95
05-103	JPI Apartments (a.k.a Emerald Park Apts.)- Dublin, Ca	1	173	729	1,686	1,937	1,275	5,801	4.34
05-104	Tract 8714- Village 22- San Ramon	3	0	242	233	258	145	881	0.66
05-105	Neighborhood 01- Tract 7984	21	23	969	1,377	1,481	1,217	5,088	3.81
05-106	Hidden Crest Park- Asterbell Dr., San Ramon	1	59	301	515	578	307	1,761	1.32
05-107	Neighborhood 08- Tract 8564	0	4	802	1,053	1,093	772	3,724	2.79
05-108	Cornerstone Apartments- San Ramon, Ca	11	121	538	924	1,189	1,061	3,844	2.88
05-109	Tract 8716- Village 24- San Ramon	3	37	326	511	560	393	1,830	1.37
05-110	RA 1124- Watermill Rd.- San Ramon	6	26	953	1,103	1,023	458	3,569	2.67
05-111	Neighborhood 02B- Tract 8688 (San Ramon)	43	103	300	482	398	184	1,510	1.13
05-112	RA 1103-Dougherty Rd., -San Ramon	12	7	647	1,311	1,135	603	3,715	2.78
05-113	Valley View Park - Monarch & Star Jasmine, San Ramon	55	427	1,134	1,537	1,512	786	5,451	4.08
05-114	Bank of America, 4250 Dublin Blvd.- Dublin, Ca	0	39	42	106	103	66	356	0.27

Recycled Water Use by Billing Period

Lic#	NAME OF SITE	Jan/	Feb	Mar/Apr	May/	Jun	Jul/Aug	Sep/Oct	Nov/	Dec	Total CCF	Total MG
05-115	Limerick Park (a.k.a. Creekview Park)	4		222	588	998	998	857	252		2,921	2.18
05-116	Tract 8712- Village 20- San Ramon	0		0	112	93	93	102	61		368	0.28
05-117	Tract 8713- Village 21- San Ramon	0		0	177	217	217	237	137		768	0.57
05-118	RA 1130- Ambridge in Windemere-San Ramon	0		13	521	286	286	673	387		1,880	1.41
05-119	RA 1123- Windemere Backbone Section 1B- San Ramon	7		47	1,502	1,690	1,690	1,851	1,186		6,283	4.70
05-121	RA 1116 - N.Wedgewood Rd.- San Ramon	6		9	173	249	249	270	171		878	0.66
05-122	RA 1117- (Monarch & Wedgewood)- San Ramon	15		70	1,055	1,647	1,647	1,785	1,361		5,933	4.44
05-123	Souyen Park - 1548 Watermill Rd., San Ramon	5		132	527	677	677	667	289		2,297	1.72
05-124	Tract 8155- Village 16- San Ramon, Ca	0		28	379	646	646	456	360		1,869	1.40
05-125	Tract 8618- Village 11B - San Ramon	1		0	233	294	294	320	208		1,056	0.79
05-126	Tract 8151- Village 12A- San Ramon	0		18	497	761	761	780	495		2,551	1.91
05-129	Tract 8154- Village 15- San Ramon	1		6	154	145	145	169	111		586	0.44
05-131	Tract 8715- Village 23- San Ramon	2		1	109	147	147	157	77		493	0.37
05-132	RA 1104- N.Gale Ridge Rd.- San Ramon	0		0	72	139	139	130	67		408	0.31
05-133	RA 1105- S.Bollinger Cyn. Rd -San Ramon	3		7	536	491	491	828	373		2,238	1.67
05-134	RA 1094- South Bollinger Canyon Rd. (Phase 1A Backbone)	120		42	1,215	1,017	1,017	1,118	967		4,479	3.35
05-135	Tract 8149- Village 10- San Ramon	11		37	412	461	461	501	286		1,708	1.28
05-139	Tract 8157- Village 18- San Ramon	6		23	128	165	165	178	155		655	0.49
05-140	Neighborhood 11 Fuel Transition/Bollinger Cyn. Rd. Frontag	0		0	11	93	93	104	64		272	0.20
05-143	RA 1137- Windemere Phase 4 Backbone- San Ramon	31		52	383	601	601	545	419		2,031	1.52
05-144	RA 1151- Windemere Phase 4 Backbone- San Ramon	22		144	1,276	2,316	2,316	2,156	1,249		7,163	5.36
05-145	Dublin Corners- Dublin, Ca	429		399	386	433	433	394	394		2,435	1.82
05-146	Neighborhood 09- Tract 8631	0		2	348	760	760	809	546		2,465	1.84
05-148	Feathermint Open Space-Neighborhoods 2A/8 Open space	14		19	692	558	558	698	627		2,608	1.95
05-149	Emerald Glen Park - Phase 3	0		6,720	3,516	5,635	5,635	5,306	3,351		24,528	18.35
06-100	Sherwood Pocket Park- 5389 Sherwood Way., San Ramon	7		51	246	309	309	308	157		1,078	0.81

Recycled Water Use by Billing Period

Lic#	NAME OF SITE	Jan/Feb	Mar/Apr	May/June	Jul/Aug	Sep/Oct	Nov/Dec	Total CCF	Total MG
06-101	Canyon Oaks Apartments (Branch Creek Place) San Ramon	132	81	395	595	875	951	3,029	2.27
06-102	Dougherty Valley Community Center & Library	2	136	462	558	480	164	1,802	1.35
06-105	DRSD District Office	3	9	86	292	395	336	1,121	0.84
06-106	Area G-Central Pkway, Dublin Blvd., Keegan St.	0	65	657	654	749	654	2,779	2.08
06-107	Windemere Ranch Middle School- 11611 E. Branch., San Ra	31	782	2,379	2,977	3,778	1,972	11,919	8.92
06-110	Mill Creek Apartments (Branch Creek Place) - San Ramon, C	24	457	548	1,239	2,049	1,093	5,410	4.05
06-119	DRSD Pump Station 300A	0	0	0	0	0	38	38	0.03
06-120	RA 1148-Japonica Way- San Ramon	6	6	301	474	605	388	1,780	1.33
06-122	Quail Run Elementary School- 400 Goldenbay Ave., San Ra	10	305	1,063	2,077	2,058	952	6,465	4.84
06-125	RA 1125-S. Wedgewood Rd.-San Ramon	0	4	353	560	541	330	1,788	1.34
06-126	Neighborhood 04- Tract 8690	5	6	489	661	816	694	2,671	2.00
06-127	Neighborhood 06 Slopes- Tract 8681	0	1	310	785	889	366	2,351	1.76
06-128	RA 1139-Stoneleaf Rd.- San Ramon	0	0	210	360	355	179	1,104	0.83
06-129	Neighborhood 14 Villapaseo- Tract 8685	0	1	339	563	533	315	1,751	1.31
06-130	Neighborhood 15-Rosegarden- Tract 8686	0	24	421	622	683	381	2,131	1.59
06-131	Creekside Park PA 0010- San Ramon, Ca	77	411	1,214	1,689	1,756	811	5,958	4.46
06-132	Tassajara Creek Phase 3 Roxbury - Dublin	9	4	209	330	942	323	1,817	1.36
06-133	Dougherty Elementary School- Dublin, Ca	85	47	843	2,063	1,837	1,129	6,004	4.49
06-134	RA 1153 & 1156 Ivyleaf Springs Rd & Golden Bay Ave. (San	3	18	252	319	324	183	1,099	0.82
06-135	RA 1122- Bollinger Canyon Road- San Ramon	4	11	1,252	1,455	1,044	1,152	4,918	3.68
06-136	Arnold Road & Martinelli Way- Dublin	0	94	198	221	190	180	883	0.66
06-137	Diablo Valley College- San Ramon, Ca	12	146	822	899	664	415	2,958	2.21
06-139	WWTP 7399 Johnson Drive	315	218	388	967	1,122	657	3,667	2.74
06-140	Dublin Transit Site A 2 -EAH Project PM-8275 (a.k.a. Camelli	7	22	90	201	93	172	585	0.44
06-141	Muirlands at Windemere Tract 7976 Lot 17 (San Ramon)	103	62	218	675	821	553	2,432	1.82
06-142	RA 1135-North Monarch Road, San Ramon	13	15	331	383	375	225	1,342	1.00

Recycled Water Use by Billing Period

Lic#	NAME OF SITE	Jan/Feb	Mar/Apr	May/June	Jul/Aug	Sep/Oct	Nov/Dec	Total CCF	Total MG
07-001	Tract 8775- Village 34- San Ramon	0	34	183	291	387	199	1,094	0.82
07-002	Tract 8776- Village 35 -San Ramon	0	0	226	317	345	254	1,142	0.85
07-006	Dougherty Hills Dog Park	0	48	108	244	265	186	851	0.64
07-007	San Ramon Sports Park- 5261 Sherwood Way, San Ramon	126	848	2,530	4,518	3,638	1,428	13,088	9.79
07-008	Oak Grove at Dublin Ranch (a.k.a) Fairway Family Communi	6	31	191	384	390	392	1,394	1.04
07-009	Dublin Ranch Senior Apartments- Dublin, Ca	12	0	168	408	386	374	1,348	1.01
07-103	Monarch Park- 8502 N. Monarch Rd., San Ramon	242	424	965	1,272	1,362	882	5,147	3.85
07-104	Dublin Gateway Medical Center- Dublin	115	164	451	821	538	366	2,455	1.84
07-106	DSRSD Maymont Lane Siphon Flushing Station	186	329	355	387	355	344	1,956	1.46
07-107	Arlington Park at Windemere-3735 Knightbridge wy. (San R	14	177	898	1,463	1,275	246	4,073	3.05
07-108	Fire Truck Park - 2070 Arlington Way (San Ramon)	0	20	256	420	427	215	1,338	1.00
07-109	Dublin Chervorlet, Cadillac- Dublin	532	374	491	655	1,101	467	3,620	2.71
07-110	RA 1174- Windemere Ph5A Backbone- San Ramon	265	142	365	848	594	660	2,874	2.15
07-111	Dublin Honda- Dublin, Ca	1,685	418	1,188	1,029	955	477	5,752	4.30
07-112	Dublin Ranch Eastern On-Site Drainage- Dublin, Ca	30	30	82	88	116	332	678	0.51
07-113	Cambell Green Park (aka Avalon Dublin Station - Demarcus	18	84	491	425	362	205	1,585	1.19
07-114	Area F Medians- Gleason Dr & Grafton for Verona	3	109	146	157	148	197	760	0.57
07-115	Dublin Ranch Area F-2 (Verona)- Dublin, Ca	18	105	632	1,053	1,609	1,092	4,509	3.37
07-116	Dublin Blvd. -DSRSD Office to East of Clark Ave. (Dublin)	0	0	29	38	38	57	162	0.12
07-117	Dublin Ranch Golf HOA- Dublin, Ca	69	498	1,760	2,703	2,327	2,439	9,796	7.33
07-118	Pinnacle at Dublin Ranch Golf- Dublin, Ca	35	155	412	591	817	663	2,673	2.00
07-119	Ted Fairfield Park	1	14	518	2,088	2,115	899	5,635	4.21
07-120	Lowe's of Dublin- Dublin, Ca	167	60	556	758	755	665	2,961	2.21
07-121	Live Oak Elementary School- 5151 Sherwood Wy, San Ram	10	48	382	795	523	210	1,968	1.47
07-122	Dougherty Valley High School- San Ramon, Ca	275	889	2,354	4,748	4,641	2,601	15,508	11.60
07-123	Dublin Ranch Water Quality Basin- Dublin, Ca	2	713	528	582	2,346	975	5,146	3.85

Lic#	NAME OF SITE	Jan/Feb	Mar/Apr	May/June	Jul/Aug	Sep/Oct	Nov/Dec	Total CCF	Total MG
08-001	Ulfert Shopping Center- Dublin, Ca	8	12	20	147	79	80	346	0.26
08-002	Dublin Civic Center and Library	248	302	1,354	2,178	2,273	1,337	7,692	5.75
08-003	Ramona Park - 6330 Murdock Way, San Ramon	38	392	940	1,120	1,243	541	4,274	3.20
08-004	Venture Commerce Center- Dublin, Ca	5	0	215	301	343	391	1,255	0.94
08-005	Area F-Park (Piazza Sorrento Park)	2	65	491	714	716	333	2,321	1.74
08-006	The Plaza at Gale Ranch- San Ramon, Ca	254	373	703	622	632	1,366	3,950	2.95
08-007	RA 1170- Dalton Way (San Ramon)	1	2	45	79	87	47	261	0.20
08-008	Tract 8777- Village 36- San Ramon	2	22	446	718	792	554	2,534	1.90
08-009	Fallon Middle School- Dublin, Ca	231	182	1,470	2,306	3,067	1,401	8,657	6.48
08-010	John Green Elementary School- Dublin, Ca	35	143	681	1,069	1,350	620	3,898	2.92
08-011	Tract 8778- Village 37, San Ramon	1	0	119	174	239	128	661	0.49
08-012	Neighborhood 07- Tract 8682	0	1	231	212	241	139	824	0.62
08-013	Grafton Station Offsite- Dublin, Ca	168	269	313	242	104	158	1,254	0.94
08-014	BART Parking Structure -Dublin, Ca	42	38	81	100	59	169	489	0.37
08-015	Tract 8773- Village 32 N. East Branch Pkwy, Chancery & Ing	0	1	264	416	339	207	1,227	0.92
08-016	Tract 8774- Village 33 Sherwood and Baker Way	0	6	102	164	160	92	524	0.39
08-017	Tract 8927- Village 43- San Ramon	2	38	154	272	222	214	902	0.67
08-018	Dublin Sonata-Gleason Median	2	64	178	138	88	276	746	0.56
08-019	Monument ID Exhibit-PA 0017 11890 Bollinger Cnyn., San R	1	1	34	63	45	28	172	0.13
08-020	Dublin Neighborhood Square Park (Devaney Park)	0	28	372	799	519	335	2,053	1.54
08-021	RA 1152-Stoneleaf Road- 7489 Stoneleaf Rd. San Ramon	4	31	538	750	701	428	2,452	1.83
08-022	Tract 8926- Village 42 (East Branch-Arlington, Enfield, Halifa	1	25	265	522	581	395	1,789	1.34
08-023	Tract 8928- Village 44 E.Branch-Arlington , Montrose-Edge	1	12	124	182	186	126	631	0.47
08-024	RA 1175 -Windemere Ph5B Backbone- San Ramon	318	361	2,235	3,758	3,805	1,752	12,229	9.15
08-025	Dougherty Rd.- South of Dublin Blvd.	1	97	275	585	872	733	2,563	1.92
08-026	Dublin Blvd. -Dougherty Rd. to Scarlett Dr.	0	14	63	121	47	63	308	0.23

Lic#	NAME OF SITE	Jan/Feb	Mar/Apr	May/June	Jul/Aug	Sep/Oct	Nov/Dec	Total CCF	Total MG	
08-027	Dougherty Rd.-median between Dublin Blvd. and Sierra Ln.	0	0	0	0	27	28	21	76	0.06
08-028	Tract 7282-SONATA- Dublin, Ca	217	410	301	310	310	414	492	2,144	1.60
08-029	Area B- Drainage Channel- Dublin, Ca	252	0	0	0	0	0	0	252	0.19
08-030	Gale Ranch Middle School- Sports field Bollinger & Main Br	3	243	1,606	2,481	2,216	920	7,469	5,555	5.59
08-031	Fallon Village Offsite-Positano Parkway- Dublin, Ca	338	139	908	1,269	1,472	1,555	5,681	4,255	4.25
08-032	Positano Parkway Median	117	270	410	435	260	270	1,762	1,325	1.32
09-001	Tract 8924- Village 40- San Ramon	3	20	325	472	497	339	1,656	1,245	1.24
09-002	Elan @ Dublin Station- Dublin, Ca	41	200	172	233	275	261	1,182	0,885	0.88
09-003	Tract 8717- Village 25- San Ramon	91	84	548	653	698	429	2,503	1,875	1.87
09-005	Tract 8929- Village 45- San Ramon	0	8	231	347	379	263	1,228	0,925	0.92
09-006	Grafton Station Pads B-D, Dublin, Ca	141	1	0	0	730	558	1,430	1,075	1.07
09-007	Seville at Gale Ranch -San Ramon, Ca	17	33	208	476	503	422	1,659	1,245	1.24
09-008	Neighborhood 06-Streets Tract 8681	2	4	405	388	522	257	1,578	1,185	1.18
09-009	Tract 9142- Village 47- San Ramon, Ca	22	38	327	652	626	437	2,102	1,575	1.57
09-010	Tract 9143- Village 48-San Ramon, Ca	11	10	311	347	356	230	1,265	0,955	0.95
09-011	I-580/Fallon Road Interchange	0	108	156	143	330	110	847	0,635	0.63
09-012	PM 7893- Demarcus Blvd. & PM 8275 Street Improvement	0	22	51	64	117	90	344	0,265	0.26
09-013	South Dougherty Road Widening- San Ramon	8	0	855	1,388	1,278	806	4,335	3,245	3.24
09-014	Tract 9144- Village 49 - San Ramon, Ca	0	6	323	392	431	291	1,443	1,085	1.08
09-015	PA 19 open space Gale ranch ph3- San Ramon	1	26	54	108	78	21	288	0,225	0.22
10-001	Six Pillars Park- PA 025 12219 Windemere Pkwy., San Ramo	79	127	452	695	700	299	2,352	1,765	1.76
10-002	Neighborhood 13- Tract 8700- San Ramon, Ca	67	156	518	1,076	1,071	617	3,505	2,625	2.62
10-003	Tract 8925- Village 41- San Ramon	1	43	214	335	349	215	1,157	0,875	0.87
10-004	Dublin Corporate Center (Koll Center)- Dublin, Ca	211	537	1,082	1,545	1,766	883	6,024	4,515	4.51
10-005	RA 1138- South Monarch Rd. -San Ramon	4	0	210	437	502	251	1,404	1,055	1.05
10-006	Fallon Sports Park- 4605 Lockhart Street, Dublin	53	2,415	5,363	6,084	7,163	4,313	25,391	18,995	18.99

Recycled Water Use by Billing Period

Lic#	NAME OF SITE	Jan/Feb	Mar/Apr	May/June	Jul/Aug	Sep/Oct	Nov/Dec	Total CCF	Total MG
10-007	Fallon Rd. North Extension	0	121	269	313	262	151	1,116	0.83
10-008	PA0040 Bark and Ride- San Ramon	3	91	749	815	1,025	482	3,165	2.37
10-009	Neighborhood 05-Subdivision 8699- San Ramon, Ca	43	60	454	621	757	554	2,489	1.86
11-001	Neighborhood 03- Tract 8970 - San Ramon, Ca	166	1	69	502	639	529	1,906	1.43
11-002	Mosaic Park -PA0021 2651 Cypress., San Ramon	3	93	323	418	444	248	1,529	1.14
11-003	Fallon Gateway Offsite- 2800 Dublin Blvd. Dublin	3	9	23	8	227	129	399	0.30
11-004	Fallon Gateway Retail Center- Target- Dublin, Ca	1,158	678	1,756	1,568	2,056	1,845	9,061	6.78
11-005	Kolb Elementary School- Dublin, Ca	37	58	575	1,276	1,352	661	3,959	2.96
11-006	RA 1154-South Monarch Rd.- San Ramon, Ca	1	0	187	310	367	274	1,139	0.85
11-008	DRSRS- Pump Station 300B	0	0	25	1	1	0	27	0.02
11-009	Tract 7651- Sorrento East- Dublin, Ca	346	110	174	619	1,060	746	3,055	2.29
11-010	Tract 8306-Gale Ranch Phase 3- San Ramon, Ca	2	187	905	1,719	2,111	1,084	6,008	4.49
11-012	Silvera Ranch Phase 4- Dublin, Ca	0	44	319	574	408	253	1,598	1.20
12-001	Tract 8952- Gale Ranch Phase 3- San Ramon, Ca	32	11	580	848	785	328	2,584	1.93
12-002	Valencia Apartments- San Ramon, Ca	45	26	605	680	608	619	2,583	1.93
12-003	Hacienda Crossings -Dublin, CA	1,017	1,689	2,440	3,056	3,248	2,252	13,702	10.25
12-004	BJ's Restaurant and Brewhouse, 3620 Fallon Road, Dublin,	106	131	100	117	123	110	687	0.51
12-005	Jordan Ranch Phase I Onsite HOA-Dublin, CA	86	30	208	344	246	246	1,160	0.87
12-006	Jordan Ranch Phase 1 Offsite Medians-Dublin, CA	49	91	284	230	246	266	1,166	0.87
12-007	Alamo Creek Park- Dublin, Ca	27	737	1,692	1,926	1,974	914	7,270	5.44
12-008	Stagecoach Park- Dublin, Ca	0	71	176	318	297	150	1,012	0.76
12-009	Kolb Park- Dublin, Ca	4	412	711	1,327	1,543	704	4,701	3.52
12-010	Wells Middle School/Cronin Park- Dublin, Ca	65	32	99	0	331	188	715	0.53
12-011	Murray Elementary School- Dublin, Ca	206	663	1,046	2,414	2,491	1,227	8,047	6.02
12-012	Crossroads@Emerald Vista & Amador Pointe@ Emerald Vis	0	6	358	470	648	485	1,967	1.47
12-013	Wexford Way and Emerald Vista Apartments- Dublin	256	114	1,035	795	1,735	2,491	6,426	4.81

Recycled Water Use by Billing Period

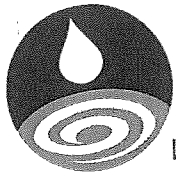
Lic#	NAME OF SITE	Jan/Feb	Mar/Apr	May/June	Jul/Aug	Sep/Oct	Nov/Dec	Total CCF	Total MG
13-001	Dublin Kia- Dublin, Ca	2	30	305	186	564	292	1,379	1.03
13-002	Positano Hills Park- Dublin	0	592	1,265	2,077	1,789	731	6,454	4.83
13-003	Goddard School-San Ramon, Ca	0	0	128	140	167	68	503	0.38
13-004	RA 1248-Gatekeeper Rd.- San Ramon, Ca	5	19	6	11	57	42	140	0.10
13-005	Frederiksen Elementary School- Dublin, Ca	57	301	557	1,815	1,749	1,672	6,151	4.60
13-006	Springfield Montessorri School- Dublin	11	121	114	115	101	91	553	0.41
13-007	Tract 8689- Neighborhood 3A- San Ramon, Ca	157	22	387	618	463	246	1,893	1.42
13-008	Fallon Village Phase 2 Backbone (Village D)- HOA	100	54	192	369	768	791	2,274	1.70
13-009	Pasa Tempo Park-3200 Palermo Way, Dublin	66	845	1,053	1,790	1,693	922	6,369	4.76
13-010	RA 1246-Barrenstar Way	38	481	393	378	320	304	1,914	1.43
13-011	Escalada on Brannigan- 10081 Brannigan St. Dublin	5	1	9	10	9	13	47	0.04
13-012	Fallon Village Phase 2 Backbone (Village D)- Median	0	92	69	80	201	193	635	0.47
14-001	Sorrento East - Pedestrian Corridor	10	10	67	129	107	250	573	0.43
14-002	Jordan Ranch Phase 4 Central Parkway Medians	390	366	378	402	109	103	1,748	1.31
14-003	Jordan Ranch Phase 4 Central Parkway HOA	364	256	322	469	355	217	1,983	1.48
14-004	Fallon Village Phase 2 Backbone - GHAD	8	1	0	19	196	147	371	0.28
14-005	Avalon Dublin Station Site C2	557	305	364	537	662	289	2,714	2.03
14-006	Val Vista Park- 7350 Johnson Dr. Pleasanton, Ca	326	1,307	4,185	7,848	7,281	2,780	23,727	17.75
14-007	Archstone Apartments	2	5	14	22	26	941	1,010	0.76
14-008	Tassajara Road Medians from N. Dublin Ranch Dr. to Dublin	105	144	937	1,230	1,007	631	4,054	3.03
14-009	Dublin High School- 8151 VILLAGE PKWY	793	1,497	3,338	2,393	1,461	412	9,894	7.40
14-010	Hacienda and North Central Parkway Median	67	84	270	270	186	225	1,102	0.82
14-011	Arnold Road & Gleason Dr. Median	0	0	0	92	142	165	399	0.30
14-012	Hacienda & Gleason Dr. Streetscapes and Medians	2	268	917	1,063	925	753	3,928	2.94
14-013	Fallon Crossings Common Area and Vineyard	45	105	420	623	535	531	2,259	1.69
14-014	City of Dublin Public Safety Complex	185	225	249	436	438	197	1,730	1.29

Lic#	NAME OF SITE	Jan/Feb	Mar/Apr	May/June	Jul/Aug	Sep/Oct	Nov/Dec	Total CCF	Total MG
14-015	Dublin Blvd. NW corner to Myrtle Dr.	3	0	728	320	428	396	1,875	1.40
14-016	Central Parkway Medians- Hacienda-Hibernia Dr.	0	75	117	119	93	99	503	0.38
14-017	Rancho Park- San Ramon	407	1,093	3,810	4,685	4,773	2,928	17,696	13.24
14-018	RA1168- Dougherty Rd. Gale Ranch Phase 4	43	0	108	165	192	148	656	0.49
14-019	Dublin Toyota- Dublin	123	376	1,076	1,549	1,685	1,027	5,836	4.37
14-020	Amador Valley Blvd. and Dougherty	1	217	269	292	264	249	1,292	0.97
14-021	Dublin Ranch Pedestrian Pathway	13	90	312	585	543	272	1,815	1.36
14-022	Antone Way and Devaney Drive Streetscapes	6	75	393	719	781	481	2,455	1.84
14-023	South Dublin Ranch Dr. Streetscapes and Medians	23	144	767	1,522	1,861	1,169	5,486	4.10
14-024	Tassajara Rd. East Side Streetscapes from Gleason to N. Du	24	87	350	702	810	645	2,618	1.96
14-025	Amador Lakes Apartments	315	818	2,941	6,060	6,809	4,452	21,395	16.00
14-026	Avalon Dublin Station Site C1	4	24	12	16	41	52	149	0.11
14-027	Silvera Ranch Phase 1	0	0	765	1,070	710	551	3,096	2.32
14-028	Jordan Ranch Phase 4 Trail and Open Space	168	136	57	109	200	12	682	0.51
14-029	Jordan Ranch Phase 4 On-Site Medians HOA	89	37	35	21	271	100	553	0.41
15-001	Fallon Gateway Chevron CarWash 2760 Dublin Blvd- Irrigati	0	11	23	65	149	121	369	0.28
15-001A	Fallon Gateway Chevron Car Wash 2760 Dublin Blvd - CarW	0	220	371	436	483	660	2,170	1.62
15-002	Parkwood Apartments	0	0	0	573	2,120	1,763	4,456	3.33
15-003	Dublin Fire Station 17- 6200 Madigan St.	0	0	90	183	204	104	581	0.43
15-004	California Highway Patrol- 4999 Gleason Dr. Dublin	0	0	10	50	49	61	170	0.13
15-005	Alameda County G.S.A Animal Shelter- 4595 Gleason Dr.	0	0	48	226	222	145	641	0.48
15-006	Persimmon Place	0	0	241	444	395	499	1,579	1.18
15-007	JM Amador Elementary- 2100 E Cantara Dr. Dublin	0	0	539	1,125	1,143	607	3,414	2.55
15-008	Jordan Ranch Neighborhood 6 Tract 8197 & 8198	0	0	4	44	45	67	160	0.12
15-009	Esprit At Dublin Station- 5584 Dublin Blvd.	0	0	0	471	774	853	2,098	1.57
15-010	Alameda County G.S.A K-9 Training Area	0	0	0	0	1,184	205	1,389	1.04

Recycled Water Use by Billing Period

Lic#	NAME OF SITE	Jan/Feb	Mar/Apr	May/June	Jul/Aug	Sep/Oct	Nov/Dec	Total CCF	Total MG
15-011	Alameda County G.S.A Public Works	0	0	19	33	29	125	206	0.15
15-012	Alameda County G.S.A Sewer Screw Washdown	0	0	0	0	0	81	81	0.06
15-013	Alameda Count G.S.A Santa Rita Jail	0	0	0	0	10,637	2,807	13,444	10.06
15-014	Dublin Senior Center	0	0	0	0	0	22	22	0.02
15-015	Amador Valley Blvd. Median	0	0	0	0	0	6	6	0.00
15-016	Jordan Ranch Phase 2 Neighborhood 3 -Capri Tract 8179	0	0	0	0	125	118	243	0.18
15-017	The Church of Jesus Chirist of Latter-Day Saints (Mormon C	0	0	0	0	0	94	94	0.07
15-018	Dublin Fire Station 16	0	0	0	0	0	49	49	0.04
15-019	Jordan Ranch Phase 4- Trio Tract 8154, 8155	0	0	40	247	439	455	1,181	0.88
constr	Temporary Construction Meters using RW - NOT LICENSED	8,262	13,315	26,562	11,995	13,384	6,800	80,318	60.08
FSL	FSL recycled water meters - LIC 06-138	65	4	135	188	179	169	740	0.55
		27,578	68,366	195,581	267,678	295,611	172,741	1,027,555	768.61

Recycled Water Use by Billing Period



**Dublin San Ramon
Services District**

Water, wastewater, recycled water

Clean Water Program

Summary of Recycled Water Usage for Calendar Year 2015

Application Type	No. of Sites	Area (Acres)	Amount Distributed (MG)	% of Total Reuse Flow
<u>LANDSCAPE IRRIGATION</u>				
Commercial/Other Greenbelts	68	152.00	137.27	18.69%
Golf Course	1	48.21	73.28	9.98%
Homeowners Association	11	28.17	25.10	3.42%
Park/Open Space	40	200.67	190.45	25.93%
Schools	18	99.61	76.11	10.36%
Streetscape/Median Greenbelts	126	248.06	204.15	27.79%
Residential Fill Station	3,600	00.00	28.20	3.84%
	3,864*	776.71	734.56	100.00%
<u>INDUSTRIAL</u>				
Commercial Uses	2	00.00	2.18	2.48%
Temporary Construction Meters	92	00.00	60.08	68.29%
Commercial Fill Station	100	00.00	25.72	29.23%
	194	00.00	87.98	100.00%

*Includes only sites with consumption in 2015.



**Dublin San Ramon
Services District**

Water, wastewater, recycled water

Clean Water Program

List of New Authorized Recycled Water Users Licenced in 2015

Lic#	NAME OF SITE	CUSTOMER	APPLICATION TYPE	SOURCE	PROJECTED ANNUAL FLOW (AF/YR)
15-001	Fallon Gateway Chevron CarWash 2760 Dublin Blvd- Irrigation	CJ Cox Fallon Gateway, LLC	Commercial/Other Greenbelts	DSRSD	0.39
15-001A	Fallon Gateway Chevron Car Wash 2760 Dublin Blvd - CarWash	CJ Cox Fallon Gateway, LLC	Commercial/Other Greenbelts	DSRSD	2.80
15-002	Parkwood Apartments	Rafanelli and Hahas Management Corp.	Commercial/Other Greenbelts	DSRSD	17.21
15-003	Dublin Fire Sation 17- 6200 Madigan St.	City of Dublin	Streetscape/Median Greenbelts	DSRSD	2.60
15-004	California Highway Patrol- 4999 Gleason Dr. Dublin	City of Dublin	Commercial/Other Greenbelts	DSRSD	0.90
15-005	Alameda County G.S.A Animal Shelter- 4595 Gleason Dr.	Alameda County G.S.A	Commercial/Other Greenbelts	DSRSD	4.40
15-006	Persimmon Place	Regency Center	Commercial/Other Greenbelts	DSRSD	3.77
15-007	JM Amador Elementary- 2100 E Cantara Dr. Dublin	Dublin Unified School District	School	DSRSD	4.93
15-008	Jordan Ranch Neighborhood 6 Tract 8197 & 8198	LSSF Jordan Ranch LLC	Streetscape/Median Greenbelts	DSRSD	1.29
15-009	Esprit At Dublin Station- 5584 Dublin Blvd.	DR Horton Bay, Inc.	Commercial/Other Greenbelts	DSRSD	0.05
15-010	Alameda County G.S.A K-9 Training Area	Alameda County G.S.A	Park/OpenSpace	DSRSD	2.20
15-011	Alameda County G.S.A Public Works	Alameda County G.S.A	Commercial/Other Greenbelts	DSRSD	1.95
15-012	Alameda County G.S.A Sewer Screw Washdown	Alameda County G.S.A	Others	DSRSD	1.27
15-013	Alameda Count G.S.A Santa Rita Jail	Alameda County G.S.A	Others	DSRSD	112.91

Lic#	NAME OF SITE	CUSTOMER	APPLICATION TYPE	SOURCE	PROJECTED ANNUAL FLOW (AF/YR)
15-014	Dublin Senior Center	City of Dublin	Commercial/Other Greenbelts	DSRSD	2.00
15-015	Amador Valley Blvd. Median	City of Dublin	Streetscape/Median Greenbelts	DSRSD	0.30
15-016	Jordan Ranch Phase 2 Neighborhood 3 -Capri Tract 8179	LSSF Jordan Ranch LLC	Homeowners Association	DSRSD	1.44
15-017	The Church of Jesus Christ of Latter-Day Saints (Mormon Church)	Mormon Church	Others	DSRSD	0.60
15-018	Dublin Fire Station 16	City of Dublin	Commercial/Other Greenbelts	DSRSD	0.70
15-019	Jordan Ranch Phase 4- Trio Tract 8154, 8155	LSSF Jordan Ranch LLC	Commercial/Other Greenbelts	DSRSD	4.07
15-020	Dublin Historic Park	City of Dublin	Commercial/Other Greenbelts	DSRSD	0.80
15-021	Dublin Tech Center	Dublin Tech Center	Commercial/Other Greenbelts	DSRSD	1.00
15-022	Silvergate Drive Medians	City of Dublin	Streetscape/Median Greenbelts	DSRSD	0.50
15-023	McNamara's Steak House	McNamara's Steak House	Commercial/Other Greenbelts	DSRSD	1.20
15-024	Dublin Pioneer Cemetery	City of Dublin	Park/OpenSpace	DSRSD	9.70
15-025	Shell Gas Station	Shell Station	Commercial/Other Greenbelts	DSRSD	1.10
15-026	Dublin Blvd. Associates	DS Property Enterprises LLC	Commercial/Other Greenbelts	DSRSD	6.60
15-027	Dublin Chevron	Dublin Chevron	Commercial/Other Greenbelts	DSRSD	0.70
15-028	Mape Park	City of Dublin	Park/OpenSpace	DSRSD	4.70
15-029	Frankie Johnny & Luigi Too	Frankie Johnny & Luigi	Commercial/Other Greenbelts	DSRSD	1.00
15-030	St. Raymond Church	St. Raymond Church	Commercial/Other Greenbelts	DSRSD	8.00
15-031	Hexcel- 11711 Dublin Blvd.	Hexcel Corporation	Commercial/Other Greenbelts	DSRSD	6.00
15-032	San Ramon Road Median- 7100 San Ramon Rd.	City of Dublin	Streetscape/Median Greenbelts	DSRSD	2.70
Total Projected Annual Flow (AF/Yr)					209.78

**Attachment D - Table 4
Dublin San Ramon Services District
Results from User's Recycled Water Self-Monitoring Reports**

Standard Observations	No. of Sites Who Reported Violations	When Deficiencies Were Corrected	How Deficiencies Were Corrected
a. Evidence of runoff of recycled water from the site	25	After and during self-monitoring inspections	Adjust nozzles, replace broken heads
b. Odor of wastewater origin from irrigation site	2	No correction was done. Odor Dissipated.	Odor is probably due to system being off for a long period of time prior to inspection
c. Evidence of ponding of recycled water, and evidence of mosquitoes breeding within the irrigation area due to ponded water	2	After and during self-monitoring inspections	Adjusted irrigation schedule, replaced with smaller emitters, installed drainage area.
d. Warning signs properly posted to inform public that irrigation or water use is recycled water and is not safe for drinking	1	After and during self-monitoring inspections	New signs were purchased and installed according to standard.
e. Evidence of leaks or breaks in the irrigation system pipelines or tubing	40	After and during self-monitoring inspections	Repaired main line breaks, leaks and pipelines as see fit.
f. Evidence of broken, or otherwise faulty drip irrigation system emitters or spray irrigation sprinklers	80	After and during self-monitoring inspections	Replaced broken heads and emitters.
g. Evidence of overflows, leaks, erosion of dikes, etc. of storage pond(s) or impoundment(s)	0	No correction was done.	No correction was done.

Attachment D - Table 5
Summary of Violations Found During Site Inspections and Corrective Action Taken

License No.	Recycled Water User	Date Inspected	Violation Code	Corrective Action Taken
14-007	Archstone Apartments	9/2/2015	4, 5	Adjust overspray and runoff, repair breaks/leaks
12-004	BJ's Restaurant	11/12/2015	5	Adjust heads to minimize runoff
06-137	Diablo Valley College	10/6/2015	4, 5	Adjust overspray and runoff, repair breaks/leaks
06-133	Dougherty Elementary School	8/17/2015	2, 4, 5	Adjust overspray and runoff, repair breaks/leaks
14-009	Dublin High School	8/27/2015	5	Adjust heads to minimize runoff
15-001	Fallon Gateway Chevron Car Wash at 2760 Dublin Blvd.	4/6/2015	No Violation	
08-009	Fallon Middle School	8/17/2015	No Violation	
13-005	Frederiksen Elementary School	8/12/2015	No Violation	
13-003	Goddard School	9/3/2015	3, 4	Adjust direct spray near toys, repair breaks/leaks
08-010	John Green Elementary School	8/12/2015	2, 4	Adjust overspray, repair breaks/leaks
11-005	Kolb Elementary School	8/12/2015	2, 4	Adjust overspray, repair breaks/leaks
12-011	Murray Elementary School	8/17/2015	4	Repair broken emitter and lateral break
06-130	Neighborhood 15- Rosegarden Tract 8686	2/19/2015	2, 4	Adjust overspray, repair breaks/leaks
09-015	PA 19 Open Space Gale Ranch Ph3	2/19/2015		
06-135	RA 1122 Bollinger Canyon Road	2/19/2015	2, 4	Adjust overspray, repair breaks/leaks
13-010	RA 1246 Barrenstar Way	2/19/2015	4	Repair broken emitter and lateral break
02-101 and 02-114	Ross/Emerald Point Bldgs. A, B & C	9/24/2015	4, 5	Adjust overspray and runoff, repair breaks/leaks
13-006	Springfield Montessorri	8/5/2015	2, 4, 5	Adjust overspray and runoff, repair breaks/leaks
02-112	Sybase-SAP	9/28/2015	4, 5	Adjust overspray and runoff, repair breaks/leaks
08-001	Ulferts Shopping Center- Dublin	1/13/2015	2, 4	Adjust overspray and runoff, repair breaks/leaks
02-116	Waterford Place- Safeway Shopping Center and Tassajara Rd.	1/21/2015	4, 5	Adjust overspray and runoff, repair breaks/leaks
12-010	Wells Middle School	8/24/2015	4, 5	Adjust overspray and runoff, repair breaks/leaks
06-107	Windemere Ranch Middle School	3/12/2015	2, 4, 5	Adjust overspray and runoff, repair breaks/leaks

Violation Code:

- 1: signs/valve tags missing
- 2: ponding/overspray
- 3: direct spray

Attachment D - Table 5
Summary of Violations Found During Site Inspections and Corrective Action Taken

- 4: leaks/breaks
- 5: runoff
- 6: cross connection

DSRSD/DERWA Water Reuse Program**EXPLANATION OF WATER REUSE PERMIT****Effective Date of Permit and Expiration Date**

Leave blank. To be filled out by DSRSD or DERWA employee.

Name of Company

This is the name of the person(s), company or entity that owns or has contracted with the hauler(s) to transport recycled water. This is the name and address of the company that will be paying the bill.

Recycled Water Use Hauler (*Company and hauler can be the same entity*)

This is the name of any representative designated by the Company to handle water pick-up and delivery to the use site.

Volume of Recycled Water

This is the highest amount in gallons that will be taken per day by the company/hauler.

Method of Water Collection

If "Fill Station at Recycled Water Treatment Plant" is checked, coordinate with Environmental Compliance (contact Ann Cigliuti at 925.875.2334) for first-time water pick-up at DSRSD's Recycled Water Treatment Plant, located at 7399 Johnson Drive, Pleasanton.

If "Recycled Water Fire Hydrant (Purple Meter to Purple Hydrant Only)" is checked, provide a \$1000 construction meter deposit (check or cash only) to Customer Service (925.828.8524) at DSRSD's District Office, located at 7051 Dublin Blvd., Dublin.

Application Method and Use of Water

Check all that apply.

Signature of Producer/Distributor

Leave Blank. To be filled out by DSRSD or DERWA employee.

Water Reuse Release Form

Haulers are to enter the amount of recycled water collected during each pickup at DSRSD's Commercial Fill Station.

Recycled Water Use Areas Form

Provide site contact name, address, and city in which the recycled water will be used. Include the expected date you plan to start using the recycled water and estimated quantity to be used per day.

If applying recycled water to landscaping at residential and commercial properties, provide end user's contact name, address, phone number, email, delivery start date and estimated quantity to be applied per day.

End User

Is the receiver of recycled water from the Company/Hauler. They are subject to the requirements of recycled water use and must obtain a Residential Fill Station Wallet ID Card from the District prior to commencement of first delivery.

DSRSD/DERWA Water Reuse Program
WATER REUSE PERMIT
 PRODUCER/DISTRIBUTOR:
Dublin San Ramon Services District
 7399 Johnson Drive
 Pleasanton, CA 94588
 (925) 846-4565

This Use Permit must be available for inspection at all times. The recycled water Hauler must carry a copy in the tanker truck at all times and present it to the DSRSD for water pickups. Permit is subject to RWQCB Order 96-011.

EFFECTIVE DATE OF PERMIT _____ EXPIRATION DATE _____

COMPANY INFORMATION

NAME OF COMPANY _____ CONTACT: _____
 PHONE: _____ EMAIL: _____
 ADDRESS _____ CITY: _____ ZIP: _____

RECYCLED WATER HAULERS INFORMATION

1. NAME OF HAULER: _____ PHONE: _____ EMAIL: _____
 CELL #: _____ ADDRESS: _____ CITY: _____ ZIP: _____
2. NAME OF HAULER: _____ PHONE: _____ EMAIL: _____
 CELL #: _____ ADDRESS: _____ CITY: _____ ZIP: _____
3. NAME OF HAULER: _____ PHONE: _____ EMAIL: _____
 CELL #: _____ ADDRESS: _____ CITY: _____ ZIP: _____

A Water Reuse Release Form must be filled out for each construction hydrant meter and on each water pickup at the WWTP, and retained at the site and on the hauler's vehicle. The hauler shall adhere to the attached Guidelines for Worker Protection.

RECYCLED WATER USE INFORMATION

ESTIMATED VOLUME OF RECYCLED WATER HAULED : _____ GALLONS PER DAY
 METHOD OF WATER COLLECTION: { } FILL STATION AT RECYCLED WATER TREATMENT PLANT { } RECYCLED WATER FIRE HYDRANT
 TRUCK TYPE: { } TANK TRUCK { } WATER TRUCK { } WATER BUFFALO TRAILER { } OTHER: _____
 USE OF RECYCLED WATER: { } COMPACTION { } DUST CONTROL { } IRRIGATION { } SEWER FLUSHING
 { } STREET CLEANING { } APPLY TO RESIDENTIAL/COMMERICAL LANDSCAPING { } OTHER: _____
 SIGNAGE REQUIRED: { } TRUCK { } PROJECT SITE COMMENTS: _____

CERTIFICATION

I HEREBY CERTIFY UNDER PENALTY OF PERJURY THAT THE INFORMATION PROVIDED IN THIS APPLICATION AND IN ANY ATTACHMENT IS TRUE AND ACCURATE TO THE BEST OF MY KNOWLEDGE. I ALSO CERTIFY THAT I HAVE READ AND AGREE TO ABIDE BY ALL APPLICABLE RULES AND REGULATIONS OF THE RWQCB ORDER NO. 96-011. PER DSRSD CODE SECTION 6.4.09 AND 6.4.14, MAKING UNAUTHORIZED CONNECTIONS IS PROHIBITED AND PENALIZEABLE. **PURPLE METER TO PURPLE HYDRANT ONLY.** DSRSD ORDINANCE #315 ALLOWS A MAXIMUM PENALTY OF \$1000 PER INCIDENT. USER CONFORMANCE TO PERMIT IS A CONDITION OF USE AND ABILITY TO RENEW.

Producer/Distributor

Signature _____ Print Name _____ Title _____ Date _____

Company Representative

Signature _____ Print Name _____ Title _____ Date _____

Recycled Water Hauler

Signature _____ Print Name _____ Title _____ Date _____

TERMS AND CONDITIONS FOR COMMERCIAL RECYCLED WATER USERS
(State of California Department of Health Services Guidelines for Tertiary Treated Recycled Water)

A. Prohibitions:

1. **No cross connections shall be made between drinking water systems and recycled water systems/equipment.**
2. Recycled water shall not be applied to irrigation areas during periods when soils are saturated.
3. Recycled water shall not be allowed to escape from designated use area(s) as surface flow that would either pond and/or enter waters of the state.
4. Irrigation or impoundment of recycled water within a minimum of 50 feet of any water well is prohibited
5. Recycled water shall not enter a dwelling or food handling facility, and shall not contact any drinking water fountains, unless specifically protected with a shielding device.
6. Recycled water shall not be discharged to the street gutter or storm drain system. If you have leftover recycled water and want to dispose of it, either discharge it to a landscaped area or to the sanitary sewer via an onsite cleanout.
7. Recycled water shall not be used as a domestic or animal water supply.
8. Recycled water shall be used only for California Code of Regulations Title 22 approved uses for tertiary-treated recycled water, which includes dust control, soil compaction, landscape irrigation, vegetable garden irrigation, and hard surface washing (paths, walls, windows, etc.).
9. **Recycled water hydrant meters must NOT be connected to potable water fire hydrants. Violators are subject to fines up to \$1,000.**
10. Hauler's vehicles used for transportation and distribution of recycled water must have water tight valves and fittings, must not leak, and tanks must be cleaned of contaminants prior to use. A truck or tank that has contained material from a septic tank or cesspool shall not be used to convey recycled water.
11. Recycled water shall not be put into existing piping connected to underground irrigation, drinking water supply, or a storage tank facility.
12. No residential delivery is allowed when using a recycled water hydrant construction meter.
13. It is prohibited to transport and pump recycled water into residential and commercial end user's buried irrigation systems.
14. It is not permitted to deliver and transfer recycled water into residential and commercial end user's onsite storage tanks.

B. User's Responsibilities

1. Enforce and implement all prohibitions listed above.
2. If a cross connection is discovered, contact DSRSD immediately and have the cross connection removed immediately.
3. Use of recycled water will be discontinued if the prohibitions and requirements of this permit are not met. Use of recycled water may resume once all of the conditions which caused the violations have been corrected.
4. Company and/or Hauler is responsible for all associated costs incurred by the District to ensure conformance of these requirements and protection of public health.
5. Tank trucks, storage containers and equipment used for recycled water shall receive disinfection prior to use with potable water.
6. User is responsible for purchasing and installing recycled water signs and magnets on transport vehicles and at use site if accessible to the public. Signs are available for purchase at the District office.
7. **Check here if applying recycled water directly onto residential and commercial landscaping.**
Company/Hauler shall:
 - a. Restrict delivery of recycled water only to end users within DSRSD's service area and DSRSD's partners (Pleasanton and EBMUD) service areas.
 - b. Submit a list, on a monthly basis, of new and existing end users receiving recycled water through your service. The list should include end user's name, address, city, zip code, phone number, email address, and quantity applied to their site during reporting period.
 - c. End users are required to submit a Residential Fill Station Use Agreement form, receive training, and obtain wallet ID cards from DSRSD's residential fill station during open enrollment periods, which can be found at www.dsrsd.com.
 - d. Verify end users have obtained a DSRSD Residential Fill Station Wallet ID Card prior to applying recycled water onto end user's landscaping.

C. The District shall:

1. Have the right and responsibility to suspend or terminate recycled water service in the event that the above conditions are not being adhered to.
2. Have the right to enter hauler's end user's property to perform periodic inspections to ensure compliance with recycled water user requirements.
3. Have the right to perform cross-connection control inspections and/or shut-down test as determined to be necessary by the District Engineer or assigned representative.
4. Have the right to notify the drinking water supplier of recycled water deliveries within their service area. The District may share the hauler's list of end users with the local drinking water supplier. The drinking water supplier may inspect haulers' property to conduct inspection and impose additional requirements to protect the drinking water supply and public health.

D. Health and Safety Guidelines

1. Public contact with recycled water shall be avoided, to the extent practical, under the normal use at the recycled water site.
2. In all areas where recycled water is used that are accessible to the public, warning signs shall be installed at adequate intervals around the use area as required by the District.
3. Recycled water shall not be applied where it could contact drinking water facilities, storm drains, or food handling facilities.
4. Adequate measures shall be taken to prevent ponding, and to prevent runoff of recycled water from the authorized recycled water use area.
5. Hauler's vehicles that convey recycled water shall be clearly labeled in a prominent location with language stating in English "Recycled Water Do Not Drink".
6. After contact with recycled water, wash hands with soap and potable water prior to eating or smoking.

I HAVE READ AND UNDERSTOOD THESE GUIDELINES.

Company Representative:

Print Name	Signature	Date
------------	-----------	------

Recycled Water Hauler:

Print Name	Signature	Date
------------	-----------	------

**DSRSD/DERWA Water Reuse Program
WATER REUSE RELEASE FORM**

PRODUCER/DISTRIBUTOR
 FACILITY DSRSD WWTP
 ADDRESS 7399 JOHNSON DRIVE
PLEASANTON, CA 94588
 PHONE (925) 846-4565

COMPANY/Hauler's AGENT
 CO. NAME: _____
 ADDRESS: _____

 PHONE: _____

DATE	VOLUME COLLECTED	USE AREA	TRUCK LIC. #	HAULER'S SIGNATURE
_____	_____	_____	_____	_____
_____	_____	_____	_____	_____
_____	_____	_____	_____	_____
_____	_____	_____	_____	_____
_____	_____	_____	_____	_____
_____	_____	_____	_____	_____
_____	_____	_____	_____	_____
_____	_____	_____	_____	_____
_____	_____	_____	_____	_____
_____	_____	_____	_____	_____
_____	_____	_____	_____	_____
_____	_____	_____	_____	_____
_____	_____	_____	_____	_____
_____	_____	_____	_____	_____
_____	_____	_____	_____	_____
_____	_____	_____	_____	_____
_____	_____	_____	_____	_____
_____	_____	_____	_____	_____
_____	_____	_____	_____	_____
_____	_____	_____	_____	_____
_____	_____	_____	_____	_____
_____	_____	_____	_____	_____

COPIES OF THIS FORM SHALL BE KEPT AT PRODUCING FACILITY AND IN TRANSPORT VEHICLE

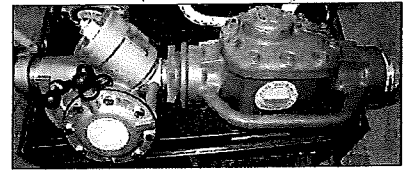
**DSRSD/DERWA Water Reuse Program
RECYCLED WATER USE AREAS FORM**

Site Contact Name:		
Address (No/Street/City/ZIP):		
Phone	Email	Delivery Start Date / Quantity Applied per day
Site Contact Name:		
Address (No/Street/City/ZIP):		
Phone	Email	Delivery Start Date / Quantity Applied per day
Site Contact Name:		
Address (No/Street/City/ZIP):		
Phone	Email	Delivery Start Date / Quantity Applied per day
Site Contact Name:		
Address (No/Street/City/ZIP):		
Phone	Email	Delivery Start Date / Quantity Applied per day
Site Contact Name:		
Address (No/Street/City/ZIP):		
Phone	Email	Delivery Start Date / Quantity Applied per day

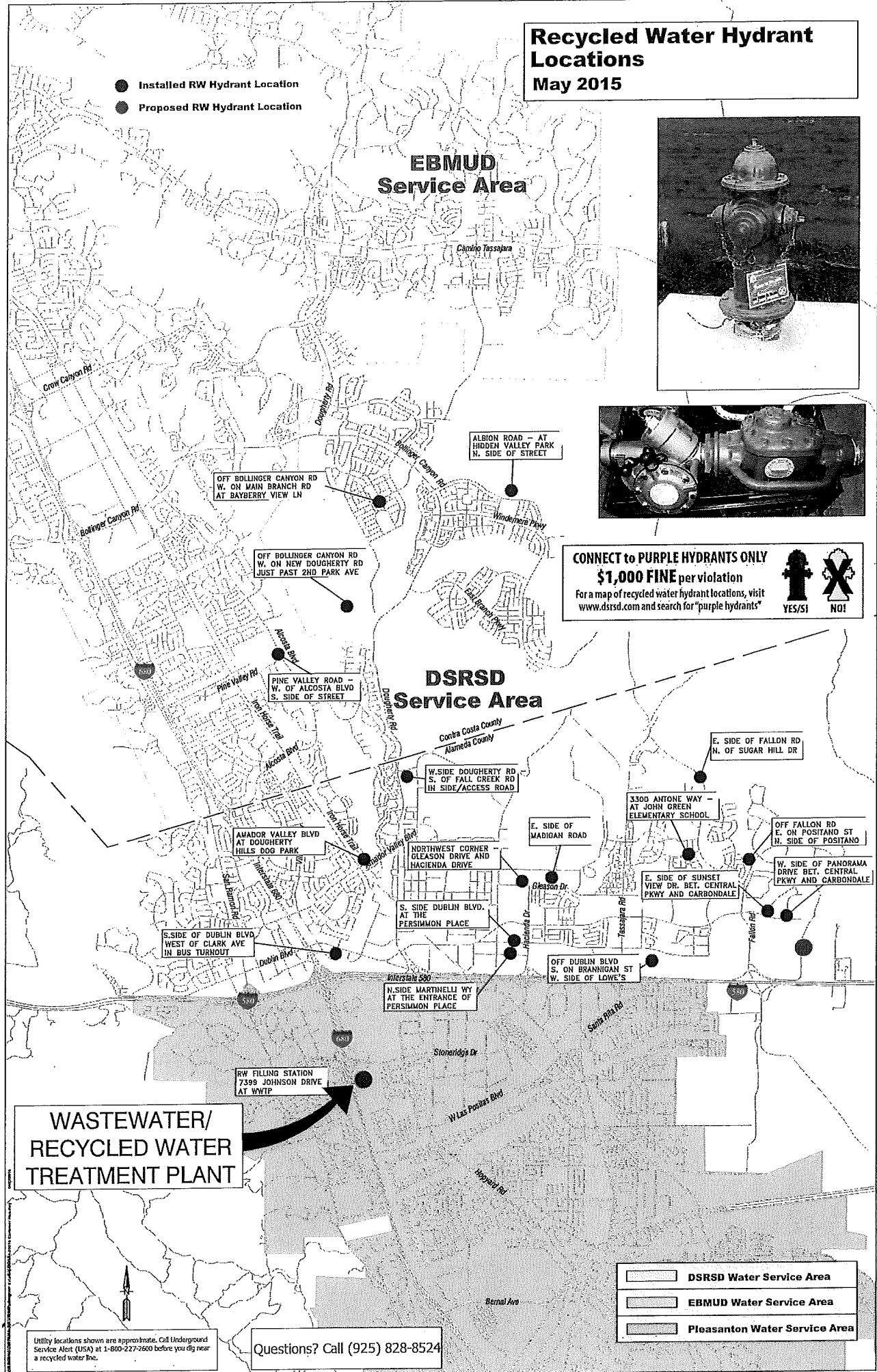
Recycled Water Hydrant Locations May 2015

- Installed RW Hydrant Location
- Proposed RW Hydrant Location

EBMUD Service Area



CONNECT to PURPLE HYDRANTS ONLY
\$1,000 FINE per violation
 For a map of recycled water hydrant locations, visit www.dsrdsd.com and search for "purple hydrants"



**WASTEWATER/
RECYCLED WATER
TREATMENT PLANT**

RW FILLING STATION
7399 JOHNSON DRIVE
AT WWTP

Utility locations shown are approximate. Call Underground Service Alert (USA) at 1-800-227-2600 before you dig near a recycled water line.

Questions? Call (925) 828-8524

- DSRSD Water Service Area
- EBMUD Water Service Area
- Pleasanton Water Service Area

CONSTRUCTION METER USE AGREEMENT

Dublin San Ramon Services District

7051 Dublin Blvd. Dublin CA 94568 (925) 828-8524

Date	Account Number	UB Customer Number
------	----------------	--------------------

Company Name	SS # /Tax ID #
--------------	----------------

Contact Person	Office Phone
----------------	--------------

Billing Address

Fax	Cell Phone
-----	------------

Job / Meter Location	<input type="checkbox"/> Dublin <input type="checkbox"/> DV
----------------------	---

Meter Number	Meter Brand	Received Fixed Charge Rate Sheet
--------------	-------------	----------------------------------

Approx. time meter will be out	Reading Out	Reading In	Meter Size
--------------------------------	-------------	------------	------------

Recycled Meter <input type="checkbox"/>	Potable Meter <input type="checkbox"/>	Zone _____	Initial _____
---	--	------------	---------------

Recycled Hydrant Wrench <input type="checkbox"/>	Initial _____	If not returned, your account will be charged \$25.00
--	---------------	---

Magnet Charge(1 included, \$30.00 for each additional magnet) # of magnets _____ (Metal Signs \$10 each) # of Metal Signs _____
--

Deposit Amount	Check Number	Check Date	Deposit Posted
----------------	--------------	------------	----------------

Meter Issued By	Meter Accepted By
-----------------	-------------------

Date Returned	Meter Returned By
---------------	-------------------

Closing Info:	Date Completed _____
----------------------	-----------------------------

Closing Bill Amount: \$ _____	_____ Deposit Applied to Closing Bill
-------------------------------	---------------------------------------

Repair Costs:	_____ Deposit Refunded	Check # _____
---------------	------------------------	---------------

	Check Amt \$ _____	Check Date _____
--	--------------------	------------------

CUSTOMER AGREES TO THE FOLLOWING:

1. Report bi-monthly request for meter reads. Failure to comply will result in a Field Tracing Charge on the bi-monthly bill, and may result in the meter being recalled to the District.
2. Upon receipt of this meter, customer will assume all responsibility for the meter as well as for returning meter to the District upon completion of the job. See attached for bi-monthly fixed meter charge.
3. Deposit will be returned within 45 days after meter is inspected and the overall condition of the meter is approved by the Water Department less any unpaid charges under Sec. 6.3.11 as applicable and less necessary repair or replacement of the meter assembly.
4. Customers who do not return the meter, for any reason including loss or theft, will be charged the full replacement cost of that meter (currently \$2400) and will be charged for the estimated water use.
5. Any damages to the meter will be repaired by the District and charged to the user.
6. **Meters shall be kept out no longer than one year** due to inspection assessment (if needed longer, the meter may be exchanged for another inspected meter, new deposit will be required). A penalty fee will be assessed for non-compliance.
7. Customer agrees to comply with District Code provisions for use of water, including prohibition of use of water outside the District's service area.
8. Deposit may not be transferred to another account. Each meter must have its own deposit on account.
9. *Refund balances may be applied to past due accounts at the discretion of the District.*

METER DUE BACK ON OR BEFORE:	_____
-------------------------------------	-------

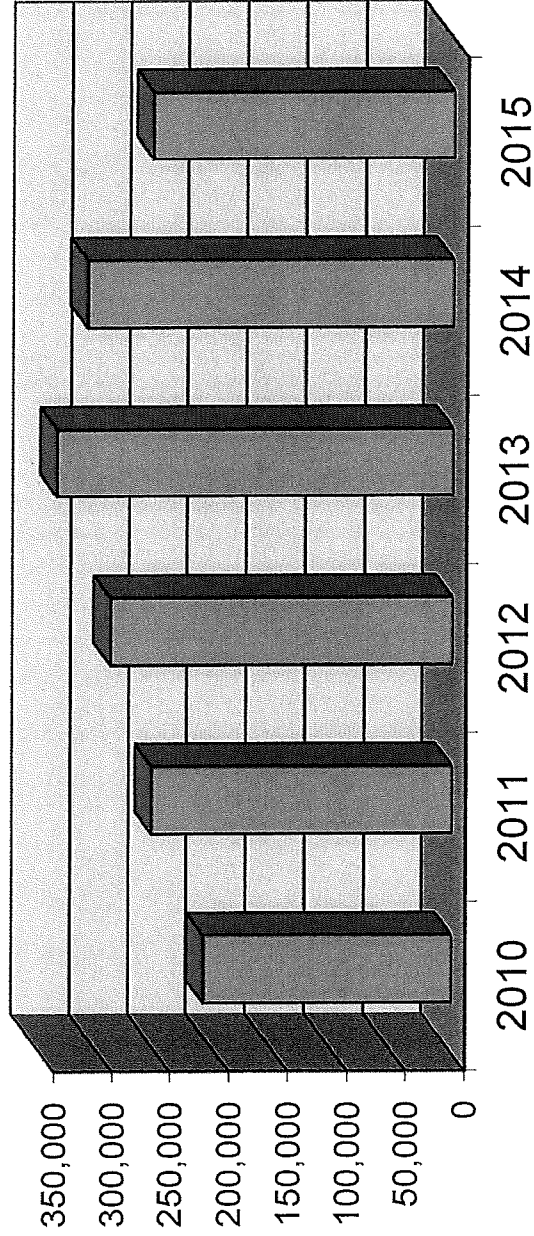
ATTACHMENT E
EBMUD RECYCLED WATER CUSTOMER INFORMATION AND COMPLIANCE SUMMARY

- Attachment C Table 1 - Tabular Summary of Recycled Water Use by Billing Period by Each User
- Attachment C Table 2 – Graph of Irrigation Growth
- Attachment C Table 2 – Summary of Recycled Water Usage By Application Use Category
- Attachment C Table 3 - List of New Authorized Recycled Water Users
- Attachment C Table 4 - Results from Users' Self-Monitoring Reports
- Attachment C Table 5 - Summary of Violations Found During Site Inspections and Corrective Actions Taken

**San Ramon Valley Recycled Water Program
Phase 1 and Phase 2 Authorized EBMUD Recycled Water Customers**

Customer Name	Service Address	City	Type of Use	Source of Recycled Water	Annual Consumption (AFY)
Country Club Village Shopping Center	9142 Alcosta Blvd.	San Ramon	Landscape Irrigation	DERWA	6.80
Easthampton HOA	2 Elmwood	San Ramon	Landscape Irrigation	DERWA	1.18
The Seasons Apartments	9003 Kimball Ave.	San Ramon	Landscape Irrigation	DERWA	21.96
Villa San Ramon	9199 Fircrest Lane	San Ramon	Landscape Irrigation	DERWA	1.29
Vintner HOA	9005 Alcosta Blvd.	San Ramon	Landscape Irrigation	DERWA	8.87
San Ramon, City of - Inverness Park	555 Burns Cir.	San Ramon	Landscape Irrigation	DERWA	0.00
San Ramon, City of - Inverness Park	625 Lombard Cir.	San Ramon	Landscape Irrigation	DERWA	11.59
San Ramon, City of - Inverness Park	2961 Ascot Dr.	San Ramon	Landscape Irrigation	DERWA	1.01
San Ramon, City of - Greenbelt	3022 Summit View Dr.	San Ramon	Landscape Irrigation	DERWA	1.68
San Ramon, City of - Greenbelt	4000 Summit View Dr.	San Ramon	Landscape Irrigation	DERWA	2.49
San Ramon, City of - Greenbelt	465 Old Ranch Rd.	San Ramon	Landscape Irrigation	DERWA	3.54
San Ramon, City of - Greenbelt	700 Stoney Creek Dr.	San Ramon	Landscape Irrigation	DERWA	3.15
San Ramon, City of - Greenbelt	1042 Stoney Creek Dr.	San Ramon	Landscape Irrigation	DERWA	1.01
San Ramon, City of - Greenbelt	286 Shavano Way	San Ramon	Landscape Irrigation	DERWA	3.05
San Ramon, City of - Greenbelt	9098 Alcosta Blvd.	San Ramon	Landscape Irrigation	DERWA	2.07
San Ramon, City of - Greenbelt	9275 Alcosta Blvd.	San Ramon	Landscape Irrigation	DERWA	3.85
San Ramon, City of - Greenbelt	9101 Alcosta Blvd.	San Ramon	Landscape Irrigation	DERWA	1.72
San Ramon, City of - Landscape Feature	3200 Montevideo Dr.	San Ramon	Landscape Irrigation	DERWA	0.00
San Ramon, City of - Landscape Feature	3201 Montevideo Dr.	San Ramon	Landscape Irrigation	DERWA	0.14
San Ramon, City of - Landscape Feature	3351 Bollinger Canyon Rd.	San Ramon	Landscape Irrigation	DERWA	0.07
San Ramon, City of - Landscape Feature	587 Fallen Leaf Circle	San Ramon	Landscape Irrigation	DERWA	2.19
San Ramon, City of - Landscape Feature	9730 Davona Dr.	San Ramon	Landscape Irrigation	DERWA	0.62
San Ramon, City of - Village Green Park	232 Triana Way	San Ramon	Landscape Irrigation	DERWA	12.77
San Ramon, City of - Athan Downs Park	2985 Montevideo Dr.	San Ramon	Landscape Irrigation	DERWA	40.58
San Ramon, City of - Boone Acres Park	9714 Davona Dr.	San Ramon	Landscape Irrigation	DERWA	12.15
San Ramon, City of - Senior Center Park & Gardens	9300 Alcosta Blvd.	San Ramon	Landscape Irrigation	DERWA	8.87
San Ramon Valley USD Montevideo School	13000 Broadmoor	San Ramon	Landscape Irrigation	DERWA	12.17
San Ramon Valley USD Country Club School	7534 Blue Fox	San Ramon	Landscape Irrigation	DERWA	15.88
San Ramon Valley USD CA High School	9870 Broadmoor	San Ramon	Landscape Irrigation	DERWA	28.85
San Ramon Valley USD Pine Valley Middle School	3000 Pine Valley Road	San Ramon	Landscape Irrigation	DERWA	31.59
San Ramon Valley USD Walt Disney Elementary School	3250 Pine Valley Road	San Ramon	Landscape Irrigation	DERWA	10.92
San Ramon Valley USD Neil Armstrong Elementary School	2849 Catalis Dr.	San Ramon	Landscape Irrigation	DERWA	12.83
San Ramon Valley USD Coyote Creek School	8700 N Gale Ridge Rd.	San Ramon	Landscape Irrigation	DERWA	13.76
Cedar Bridge HOA	8850 N Gale Ridge Rd.	San Ramon	Landscape Irrigation	DERWA	3.19
San Ramon, City of - Greenbelt	8709 N Gale Ridge Rd.	San Ramon	Landscape Irrigation	DERWA	5.33
San Ramon, City of - Greenbelt	8901 N Gale Ridge Rd.	San Ramon	Landscape Irrigation	DERWA	2.62
San Ramon, City of - Greenbelt	8988 N Gale Ridge Rd.	San Ramon	Landscape Irrigation	DERWA	4.12
San Ramon, City of - Greenbelt	8998 N Gale Ridge Rd.	San Ramon	Landscape Irrigation	DERWA	5.55
San Ramon, City of - Greenbelt	10501 Bollinger Canyon Rd.	San Ramon	Landscape Irrigation	DERWA	13.41
San Ramon, City of - Greenbelt	3073 N. Chantarella Dr.	San Ramon	Landscape Irrigation	DERWA	0.04
Shapell Industries - Bridges Golf Course	10503 Bollinger Canyon Rd.	San Ramon	Landscape Irrigation	DERWA	110.83
Shapell Industries - Bridges Golf Course	10505 Bollinger Canyon Rd.	San Ramon	Landscape Irrigation	DERWA	119.79
Shapell Industries - Bridges Golf Course Clubhouse	9002 S Gale Ridge Rd.	San Ramon	Landscape Irrigation	DERWA	5.90
Shapell Industries - Bridges Golf Course Driving Range	9021 S Gale Ridge Rd.	San Ramon	Landscape Irrigation	DERWA	25.55
Chevron USA	6001 Bollinger Canyon Rd.	San Ramon	Landscape Irrigation	DERWA	130.66
San Ramon, City of - Windy Hills Park	1236 Ustilago Dr.	San Ramon	Landscape Irrigation	DERWA	5.39
Subtotal of Phase1 and Phase 2 Customers					711.06

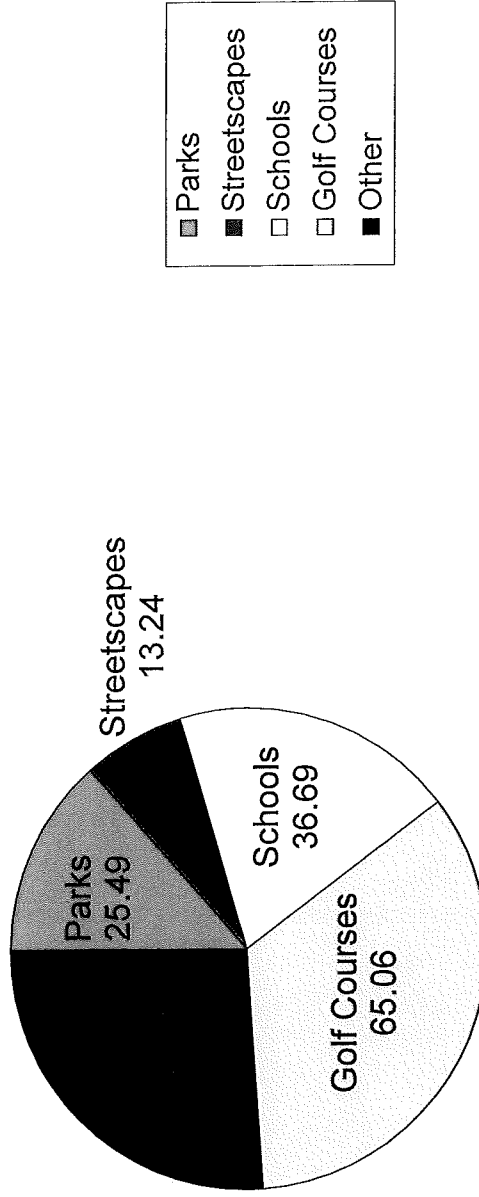
East Bay Municipal Utility District Recycled Water Irrigation Usage (ccf) 2010 - 2015



San Ramon Valley Recycled Water Program
 EBMUD Recycled Water Use Customers
 Irrigation Site Location

	Number of Sites	Amount Distributed (MG)	% of Total Reuse Flow
Parks	8	25.49	13%
Streetscapes	20	13.24	7%
Schools	7	36.69	19%
Golf Courses	1	65.06	34%
Other	7	49.86	26%
Total	43	190.16	100%

East Bay Municipal Utility District
 Recycled Water Distributed (MG) Calendar Year Jan - Dec 2015



**San Ramon Valley Recycled Water Program
Self-Monitoring Report Compliance
Irrigation Customers**
2015

Customer Name	Service Address*	Customer Naming Convention	Recycled Water Site Supervisors	In-Service Date	January 1 - June 30	July 1 - December 31	SMR Comments & Repairs
Cedar Ridge HOA	1850 N Gale Ridge Rd	Cedar Ridge HOA	Cesar Delgado	2/15/2005	X	X	
San Ramon Valley Shopping Center	9142 Bridgeway Canyon Rd	San Ramon Valley Shopping Center	Frank Cozic	4/10/2008	X	X	SMR 2: Leaks repaired
Eschamption HOA	2 Elmwood	Eschamption HOA	Hector Lopez	4/10/2008	X	X	
Seasons Apartments	5903 Kitchell Ave	The Seasons Apartments	Cesar Delgado (different contact than Cedar Ridge HOA)	8/4/2006	X	X	
Bridges Golf Course	10505 Bolinger Canyon Rd	Bridges Golf Course	Robert Henderson	12/27/2005	X	X	SMR 1 & 2: Leaks repaired
Bridges Golf Course Chubbuck Ranch	5902 S Gale Ridge Rd	Bridges Golf Course Chubbuck Ranch	1 meter, 1 SMR for Chubbuck Landscape	2/15/2008	X	X	SMR 1 & 2: Leaks repaired
Bridges Golf Course Chubbuck Ranch	5902 S Gale Ridge Rd	Bridges Golf Course Chubbuck Ranch	1 meter, 1 SMR for Dining Range	7/8/2008	X	X	SMR 1 & 2: Leaks repaired
Village Green Park	5199 Fitzgerald Lane	Village Green Park	Noel Patel	11/2/2005	X	X	SMR 1 & 2: Leaks repaired
Village Green Park	5925 Alameda Blvd	Village Green Park	Yvonne HCA	5/27/2007	X	X	
San Ramon, City of - Greenbelt	1608 Alameda Blvd	Bella Mare	Sam Anderson = RVSS/Call City of San Ramon sites	3/15/2008	X	X	SMR 1: Sprinklers repaired
San Ramon, City of - Greenbelt	6101 Alameda Blvd	Village Parkway		8/24/2008	X	X	SMR 1: Sprinklers repaired, SMR 2: Minor leaks repaired
San Ramon, City of - Greenbelt	7775 Alameda Blvd	Shag Canyon @ Alameda		3/21/2008	X	X	SMR 1: Sprinklers repaired
San Ramon, City of - Greenbelt	10501 Bolinger Canyon Rd	Bolinger Canyon Road		5/24/2008	X	X	SMR 1 & 2: Sprinklers and nozzles repaired
San Ramon, City of - Greenbelt	501 N. Chubbuck Dr	N. Chubbuck		11/29/2013	X	X	SMR 1 & 2: Sprinklers and nozzles repaired
San Ramon, City of - Greenbelt	501 N. Chubbuck Dr	N. Chubbuck		11/29/2013	X	X	SMR 1 & 2: Sprinklers and nozzles repaired
San Ramon, City of - Greenbelt	8708 N Gale Ridge Rd	N. Gale Ridge Road		2/9/2008	X	X	SMR 1 & 2: Sprinklers and nozzles repaired
San Ramon, City of - Greenbelt	8588 N Gale Ridge Rd	N. Gale Ridge Road		2/15/2008	X	X	SMR 1 & 2: Sprinklers and nozzles repaired
San Ramon, City of - Greenbelt	485 Old Gale Ridge	Old Gale Ridge		3/16/2008	X	X	SMR 1 & 2: Sprinklers and nozzles repaired
San Ramon, City of - Greenbelt	286 Stranava Way	Stranava 1 & 2		4/10/2008	X	X	SMR 1: Sprinklers repaired
San Ramon, City of - Greenbelt	700 Stoney Creek Dr	Stoney Creek 1, 2 & 3 @ Springbrook & Old Ranch	Separate SMR from 1942 Stoney Creek Ranch	3/16/2008	X	X	SMR 1 & 2: Sprinklers and nozzles repaired
San Ramon, City of - Greenbelt	1042 Stoney Creek Dr	Stoney Creek 1, 2 & 3 @ Springbrook & Old Ranch	Separate SMR from 700 Stoney Creek Ranch	3/16/2008	X	X	SMR 1: Sprinklers repaired
San Ramon, City of - Greenbelt	3592 Summit View Dr	Summit View @ Old Ranch		3/16/2008	X	X	SMR 2: Sprinklers and nozzles repaired
San Ramon, City of - Greenbelt	4650 Summit View Dr	Summit View @ Old Ranch		3/16/2008	X	X	SMR 2: Sprinklers and nozzles repaired
San Ramon, City of - Greenbelt	9730 Davona Drive	Cross Valley Trail		6/27/2012	X	X	SMR 1: Minor head and nozzle repairs
San Ramon, City of - Landscape Features	3851 Bolinger Canyon Rd	Menhaden/Pho Valley Trailheads		2/20/2007	X	X	SMR 1: Sprinklers repaired
San Ramon, City of - Landscape Features	3000 Montezuma Dr			1/8/2005	X	X	SMR 1: Sprinklers repaired
San Ramon, City of - Parks	3620 Lelandville Dr			1/18/2005	X	X	SMR 1: Sprinklers repaired
Alhambra Park	2895 Montevideo Dr	Alhambra Park		3/7/2007	X	X	SMR 2: Replaced a leaking fx with new dip fx, installed new valves.
Boone Acres Park	8714 Davona Dr	Boone Acres Park		8/12/2007	X	X	SMR 2: Installed new valves
Inverness Park	2861 Alcedo Dr	Inverness Park		3/9/2006	X	X	
Inverness Park	525 Lyons Cir	Inverness Park	3 leaks, repaired as 1 tile for SMR purposes	3/9/2008	X	X	
Senior Center Park & Garden	8300 Alameda Blvd	Senior Center Park & Garden		6/15/2009	X	X	
Windy Hills Park	1294 Ludlago Dr	Windy Hills Park		1/5/2013	X	X	
Village Green Park	723 Trina Way	Village Green Park		3/16/2008	X	X	
SRVUSD - CA High School/Olympic Pool	18700603 Rosemead	California High School/Olympic Pool	Sam Anderson = RVSS for portions of SRVUSD sites maintained by City	8/24/2008	X	X	SMR 1: Minor head and nozzle repairs
SRVUSD - Country Club School	7534 Blue Fox	Country Club School & Park	Shurt Watson = RVSS for portions of BRVUSD sites maintained by BRVUSD	8/9/2008	X	NA	SMR 1: Minor head and nozzle repairs
SRVUSD - Coyote Creek School	8700 N. Galla Ridge Rd	Coyote Creek School		1/18/2005	X	X	SMR 1: Minor head and nozzle repairs, SMR 2: Replaced malfunctioning valves, main line repair
SRVUSD - Deer Creek School	2845 Alameda Blvd	Deer Creek School		1/18/2005	X	X	SMR 1: Minor head and nozzle repairs
SRVUSD - Neil Armstrong School	2845 Alameda Blvd	Neil Armstrong School		5/14/2011	X	NA	SMR 1: Minor head and nozzle repairs, SMR 2: Replaced ball valve
SRVUSD - Pine Valley Middle School	3000 Pine Valley Rd	Pine Valley School		4/22/2011	X	X	SMR 1: Minor head and nozzle repairs, SMR 2: Replaced solenoid valve, heads and cable
SRVUSD - Walt Disney School	3250 Pine Valley Rd	Walt Disney School & Park		5/16/2011	X	NA	SMR 1: Minor head and nozzle repairs, SMR 2: Replaced sprinkler heads

RVSS = Recycled Water Site Supervisor
X = SMR submitted (as of 12/31/14, 47 possible SMR/irrigation sites; 47 SMRs submitted = 100% compliance)
O = SMR not submitted
NA = Not Applicable
* = All service addresses are in San Ramon

San Ramon Valley Recycled Water Program
EBMUD Recycled Water Use Customers
Irrigation Site Location

Service	Site Name	Service Address	In-Service Date	Date of Annual Inspection	Observations From Annual Inspection
5057569	Cedar Bridge HOA	8850 N Gale Ridge Rd.	2/15/06	9/1/2015*	Missing sign
5057677	East Hampton HOA	2 Elmwood	4/10/06	9/22/2015	OK
5058599	San Ramon, City of - greenbelt	8901 N Gale Ridge Rd.	2/9/06	11/17/2015	OK
5058600	San Ramon, City of - greenbelt	8988 N Gale Ridge Rd.	2/15/06	11/12/2015*	Missing labels
5058601	San Ramon, City of - greenbelt	8998 N Gale Ridge Rd.	2/15/06	11/17/15	OK
5059597	San Ramon, City of - greenbelt	10501 Bollinger Canyon Rd.	5/24/06	11/17/2015*	Missing sign, bushes need trim
5059276	San Ramon, City of - greenbelt	296 Shavano	4/10/06	12/10/2015	OK
5059277	San Ramon, City of - greenbelt	9098 Alcosta	3/15/06	9/23/2015*	Runoff, missing labels
5059278	San Ramon, City of - greenbelt	9275 Alcosta	3/21/06	10/8/2015*	Leak/ponding, missing tag/labels
5060006	San Ramon, City of - greenbelt	9101 Alcosta	8/24/06	10/7/2015*	Missing sign, ponding, evidence of daytime irr.
5057567	San Ramon, City of - greenbelt	3022 Summit View	3/16/06	12/8/2015	OK
5057566	San Ramon, City of - greenbelt	4000 Summit View Dr.	3/16/06	12/8/2015	OK
5059188	San Ramon, City of - greenbelt	700 Stoney Creek	3/16/06	12/8/2015	OK
5057565	San Ramon, City of - greenbelt	1042 Stoney Creek	3/16/06	11/25/2015*	Found GV, CV/strainer, needs tag
5057568	San Ramon, City of - greenbelt	455 Old Ranch Rd.	3/16/06	11/25/2015*	Uncover cv/lc
5060906	San Ramon, City of - greenbelt	3200 Montevideo Drive	11/8/06	11/10/2015*	Missing lid
5060905	San Ramon, City of - greenbelt	3201 Montevideo Drive	11/8/06	11/10/2015	OK
5061113	San Ramon, City of - greenbelt	3351 Bollinger Canyon Rd.	2/20/07	11/17/2015	OK
5060907	San Ramon, City of - Athan Downs Park	2964 Ascot Dr.	3/7/07	11/10/2015	OK
5058923	San Ramon, City of - Boone Acres Park	9714 Davona Dr.	9/12/07	10/23/2015*	Missing tags/labels, irr. leak/overwatering
5058853		2961 Ascot Dr.	3/9/06	11/10/2015	OK
5058851	San Ramon, City of - Inverness Park	555 Burns Cir.	3/9/06	11/10/2015	OK
5058852		625 Lemon Cir.	3/9/06	11/10/2015	OK
5059279	San Ramon, City of - Sr Center Park & Grdns	9300 Alcosta Blvd.	6/15/09	10/15/2015*	1 missing tag, 3 labels, all garden hose bibs need vacuum breakers
5058922	San Ramon, City of - Village Green Park	232 Triana Way	3/16/06	9/22/2015*	6 labels missing, 3 signs missing, 2 damaged; ponding in 2 areas
5058921	Shapell Industries - Driving Range	9021 S Gale Ridge Rd.	7/6/06	10/8/2015	OK
5058850	Shapell Industries - Golf Course Clubhouse	9002 S Gale Ridge Rd.	2/15/06	9/1/2015*	1 sign missing, trim bushes covering boxes
5058598	San Ramon, City of - Shapell Greenbelt	8709 N Gale Ridge Rd.	2/9/06	11/12/2015	Broken/missing covers, missing signs, paint cover
5059621	Shapell Industries - Golf Course	10503 Bollinger Canyon Rd.	12/12/06	10/28/2015*	Need updated plans, many items not located, missing signs.

San Ramon Valley Recycled Water Program
EBMUD Recycled Water Use Customers
Irrigation Site Location

Service	Site Name	Service Address	In-Service Date	Date of Annual Inspection	Observations From Annual Inspection
5059629	Shapell Industries - Golf Course	10505 Bollinger Canyon Rd.	12/12/06	10/28/2015*	Same as above
5060005	SRVUSD - California High School	9870 Broadmoor Dr.	8/31/06	11/4/2015	Missing tags/labels/signs, ponding, needs new drawings
5059285	SRVUSD/City of SR - County Club Sch/Park	7534 Blue Fox Way	6/9/06	9/30/2015*	4 missing signs, damaged boxes, missing label
5058597	SRVUSD/City of SR - Coyote Creek School/Park	8700 N Gale Ridge Rd.	1/16/06	9/28/2015*	Needs sign in garden, trim bushes
5059286	SRVUSD/City of SR - Montevideo Sch/Park	13000 Broadmoor Dr.	4/12/06	8/26/2015*	2 cv boxes need lids, 2 signs missing, 2 missing tags/labels
5057570	ROIC California, LLC	9142 Alcosta Blvd.	4/10/06	9/2/2015*	1/14/15: corrections done
5059280	The Seasons Apartments	9003 Kimball Ave.	8/4/06	9/2/2015*	hose bibs need tags/vacuum breakers, ponding ws bldg 130
5058920	Vintage Senior Mgmt	9199 Fircrest Lane	11/3/06	9/21/2015	OK
5060982	Vintner HOA	9005 Alcosta Blvd.	5/2/07	9/30/2015*	1 missing sign, 1 label missing
5060004	Chevron	6001 Bollinger Canyon Rd.	8/1/10	12/15/2015	OK
5060550	SRVUSD/City of SR-Walt Disney Sch/Park	3250 Pine Valley Rd.	5/16/11	9/1/2015*	Missing sign, labels
5066372	SRVUSD/City of SR-Pine Valley Mid Sch/Park	3000 Pine Valley Rd.	4/22/11	8/26/2015*	2 signs missing, 1 damaged
5065419	SRVUSD/City of SR-Neil Armstrong Sch/Park	2849 Calais Dr.	5/14/11	9/1/2015*	replace worn/missing lids & labels, raise sunken box
6450873	San Ramon, City of - greenbelt	581 Fallen Leaf Cir.	11/22/11	11/17/2015*	Need to uncover quick couplers
61026145	San Ramon, City of - greenbelt	9730 Davona Dr	8/6/12	11/12/2015	OK
591369	San Ramon, City of - Streetscape	3073 N Chantarella Dr	12/3/13	11/17/2015*	Need 1 new box/lid
91976925	San Ramon, City of - Windy Hills Park & Street	1236 Ustilago Dr	12/3/13	11/17/2015	OK
5058600	San Ramon, City of - greenbelt	8988 N Gale Ridge Rd.	2/15/06	11/15/2016	Missing labels

*Customer has been notified to correct the problem.

**This site has been in-service for less than 1 year. The annual inspection will be scheduled to occur within 1 year of the in-service day.

Inspections included the following:

Evidence of recycled water escaping any irrigation site and/or surface impoundment through surface runoff or airborne spray.

Odors of recycled water origin. Note source, characterization, and travel distance of odors.

Evidence of prolonged ponding of recycled water in the irrigation site as a result of excessive spray.

Adequate posting of warning signs or notices to inform the public of the use of recycled water for irrigation.

Evidence of leaks or breaks in the irrigation system pipelines, tubing, drip irrigation, sprinkler emitters, or in the recycled water storage impoundment.

Maintenance of the required buffer distance from areas to be protected.

Evidence of direct spraying of recycled water on people, dwellings, food-handling facilities, or drinking fountains.

ATTACHMENT F
CONTACT INFORMATION FOR DSRSD, EBMUD, and DERWA

CONTACT INFORMATION

Rhodora Biagtan	Program Administrator/Engineer Office: 925-875-2255
Dan Gallagher	Operations Manager Office: 925-875-2345
Dan McIntyre	Engineering Manager Office: 925-875-2244
Stefanie Olson	Customer Permitting and Inspection Office: 925-875-2245
Clint Byrum	Recycled Water Distribution Sup. Office: 925-875-570-8916
On-Call Distribution Operator	Distribution Emergency Operator Primary: 925-872-5890 Back-up: 925-872-5889
Levi Fuller	Recycled Water Treatment Sup. Office: 925-875-2300
Brian Vannatter and Virgil Sevilla	Treatment Plant Process Leads Office: 925-519-0557
On-Duty Treatment Plant Operator	Treatment Emergency Operator Primary: 925-519-0557 Back-up: 925-872-5887
Jim Bewley	DERWA Authority Manager Office: 925-875-2234