



**Dublin San Ramon  
Services District**

*Water, wastewater, recycled water*



# CONSERVATION UPDATE

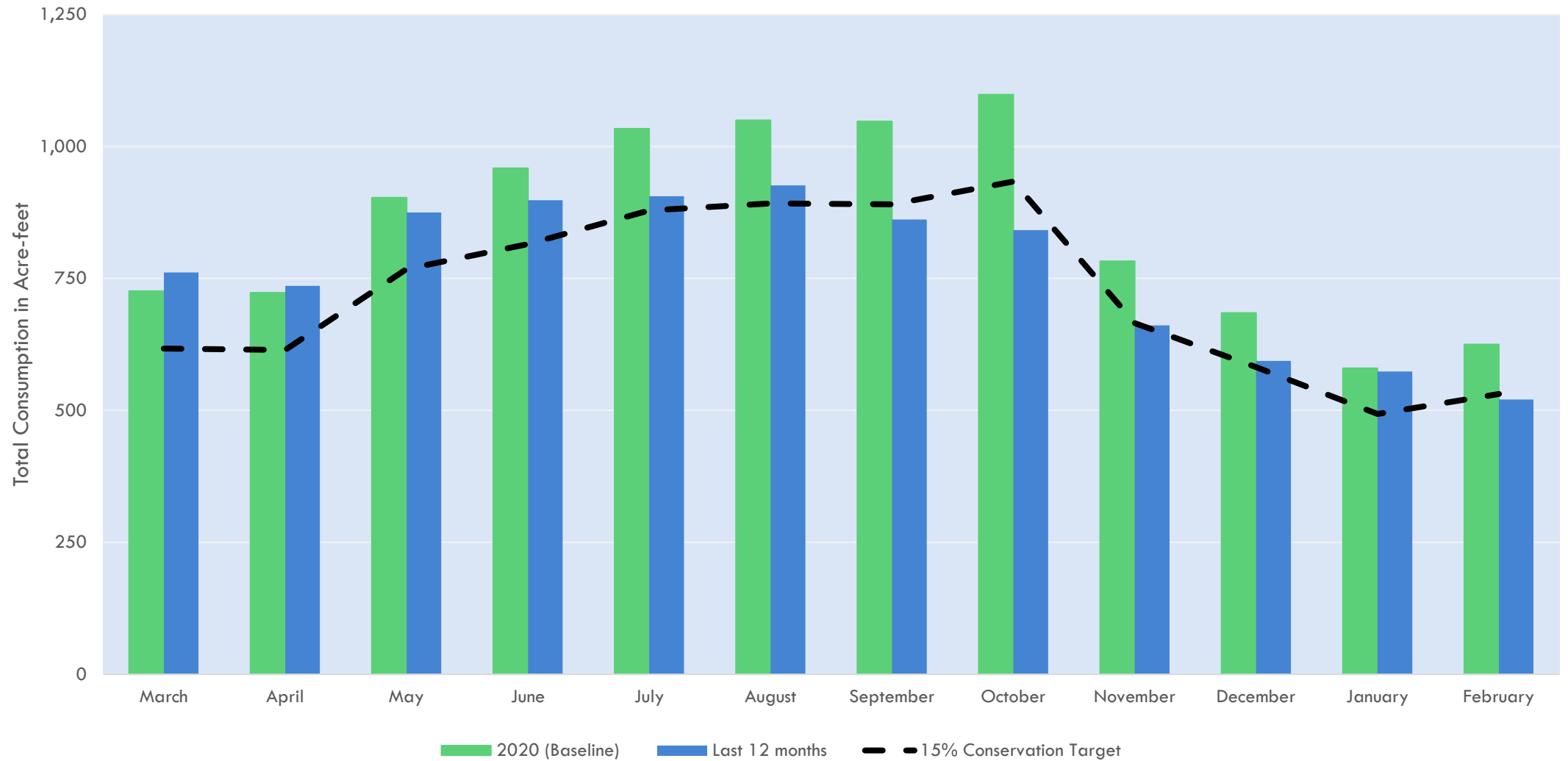
*Irene Suroso*  
Senior Engineer

Lake Oroville Dam Spillway  
DWR released 15,200 cfs to Feather River  
on March 13, 2023, for flood control

March 21, 2023

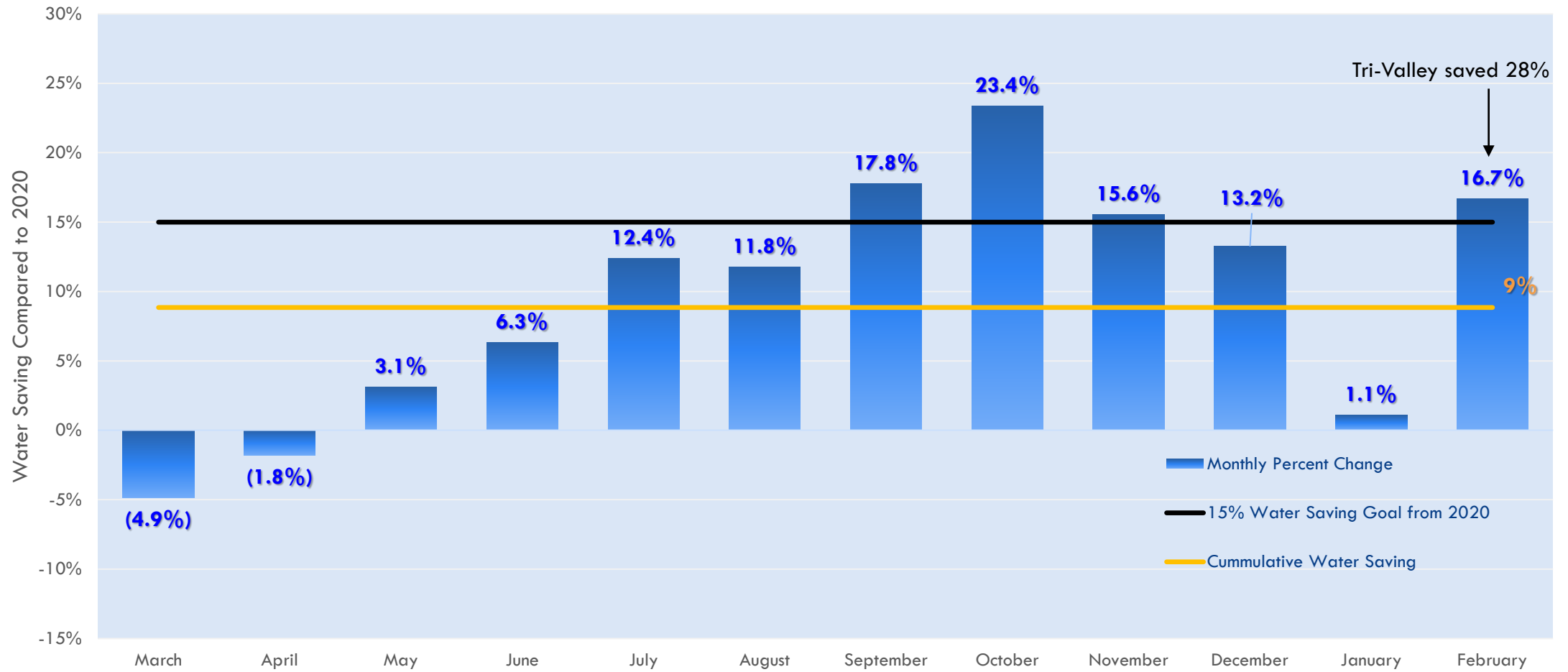


# WATER USE AND CONSERVATION RESULTS

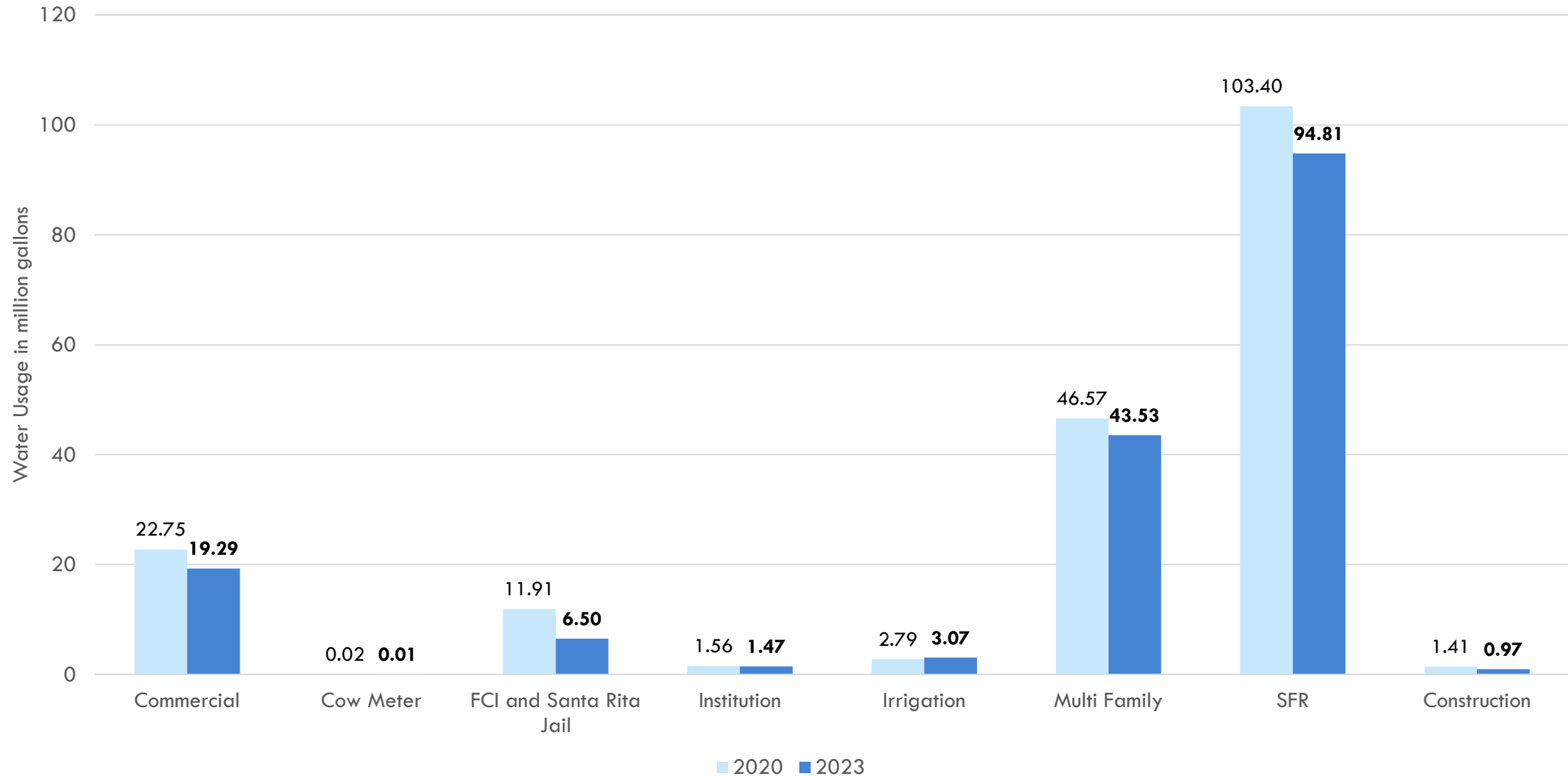


	2020	2021	2022	2023
February	625	578	622	518
Unit in AF				

# WATER USE AND CONSERVATION RESULTS




# POTABLE WATER USE BY CUSTOMER TYPES IN FEBRUARY



# PUBLIC OUTREACH

## Electronic Newsletter

We love to recycle water ♡



**Jan Lee**  
ASSISTANT GENERAL MANAGER

DSRSD Assistant General Manager Jan Lee at the water recycling plant. Click the video image to watch on YouTube.

The California Special Districts Association recently visited the water recycling plant at the Regional Wastewater Treatment Facility in Pleasanton to learn about our recycled water program.

**Why it matters:** DSRSD is proud of its recycled water partnership with the East Bay Municipal Utility District and the City of Pleasanton.

**By the numbers:** The program provides more than 1.5 billion gallons of recycled water a year.

- Since its inception in 2006, there have been more than 18 billion gallons of recycled water delivered to customers.
- Recycled water makes up about 25% of DSRSD's total water supply.

You'll see recycled water in use via purple pipes at parks, golf courses, sports fields, school grounds, commercial sites, and roadway medians.

**Check out this quick [YouTube video](#)** of DSRSD Assistant General Manager Jan Lee talking about our water recycling efforts and how it benefits the community—especially during times of drought.

## Social Media Posts

Dublin San Ramon Services District - DSRSD  
February 27 at 12:52 PM · 🌐

Make sure those sprinkler systems are off! We're happy to have precipitation this week. Outdoor irrigation is prohibited during and within 48 hours of rainfall.

Review all water conservation rules on our website: <https://www.dsrds.com/.../water-conservation/water-use-rules>

**Thunderstorm Outlook - Tomorrow**  
Weather Forecast Office San Francisco Bay Area  
Sunday, February 26

**What**  
→ Thunderstorms producing lightning, gusty winds, and small hail

**Where**  
→ Bay Area and Monterey Bay

**When**  
→ Monday morning through Monday afternoon

**Impacts & Safety**  
→ Dangerous lightning  
→ Localized flooding  
→ Strong gusty winds  
→ Small hail  
→ **When thunder roars go indoors!**

**Forecast Confidence**  
Low Medium High

**What is this?**  
A Thunderstorm Outlook means that...  
→ There is a 10% or greater chance for thunderstorms in the shaded area  
→ Thunderstorm hazards including lightning, gusty winds, localized flooding and small hail may exist  
→ Stay weather aware especially if you have outdoor plans.

**US National Weather Service San Francisco Bay Area/Monterey California**  
February 26 at 2:59 PM · 🌐

Thunderstorms are one of the potential weather hazards for tomorrow. Lightning, gusty winds, small hail, and locally heavy rain are expected. Keep an eye to the... [See more](#)

👍 Like    💬 Comment    ➦ Share

## District Webpage

Home   Your Account   Your Dollars at Work   About Us   Outreach   Do Business With Us   Careers   How To...

**CONSERVATION—HOW ARE WE DOING?**  
IN FEBRUARY, DSRSD CUSTOMERS **CONSERVED 17%**

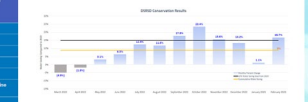
**STILL IN A DROUGHT**  
We love the rain, though water conservation is still important after multiple years of drought.

Pay Your Bill  
Report a Problem  
AquaHawk  
Board Meetings & Agendas  
Library

**Dublin San Ramon Services District**  
Water, wastewater, recycled water

Water Conservation

**Mandatory 15% Water Conservation for Tri-Valley**  
The Tri-Valley water wholesalers, Zone 7 Water Agency, is imposing mandatory 15% water use reduction compared to 2020 usage. February 2021 includes the DSRSD Board of Directors approval of Stage 2 Mandatory Water Shortage Emergency on September 21, 2021. View the Community Conservation Presentation given to Dublin Water on July 2.

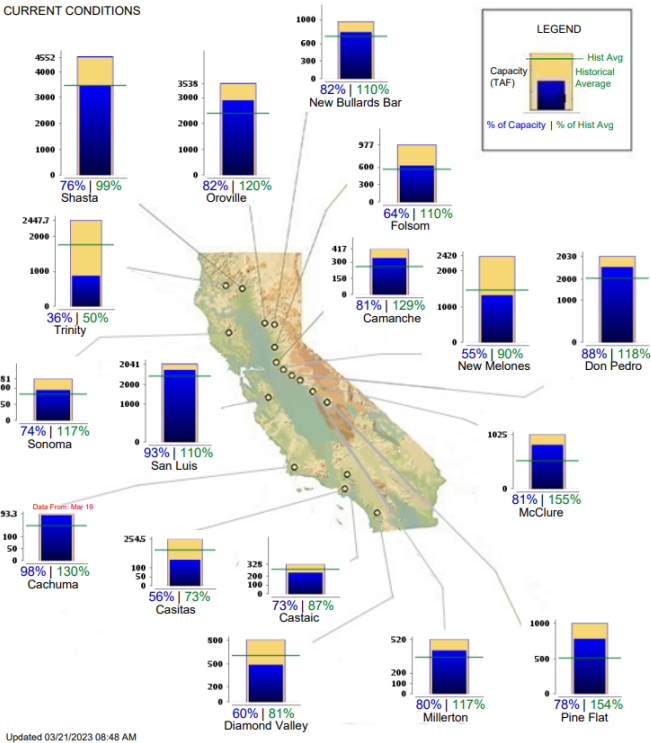


Bar graph showing 10 months of DSRSD drought response by water conservation in our best.

CALIFORNIA MAJOR WATER SUPPLY RESERVOIRS

CURRENT CONDITIONS

Midnight - March 20, 2023



# DROUGHT UPDATES

- State Reservoir
  - Oroville at 82% Total Capacity (120% Historical Average)
  - San Luis at 93% Total Capacity (110% Historical Average)
- March 3<sup>rd</sup> Snow Survey at Phillip Station
  - 177% of average
  - 116.5 inches of snow depth (41.5 inches of snow water equivalent)
- Statewide Snowpack
  - 225% of normal (218% of April 1 average)
  - 56.2 inches of snow water equivalent
- ~45% of the State is out of the drought category, and 8% are in the severe drought category





# SUPPLY UPDATE

DWR increases SWP allocation from 30 to 35%



QUESTIONS?

